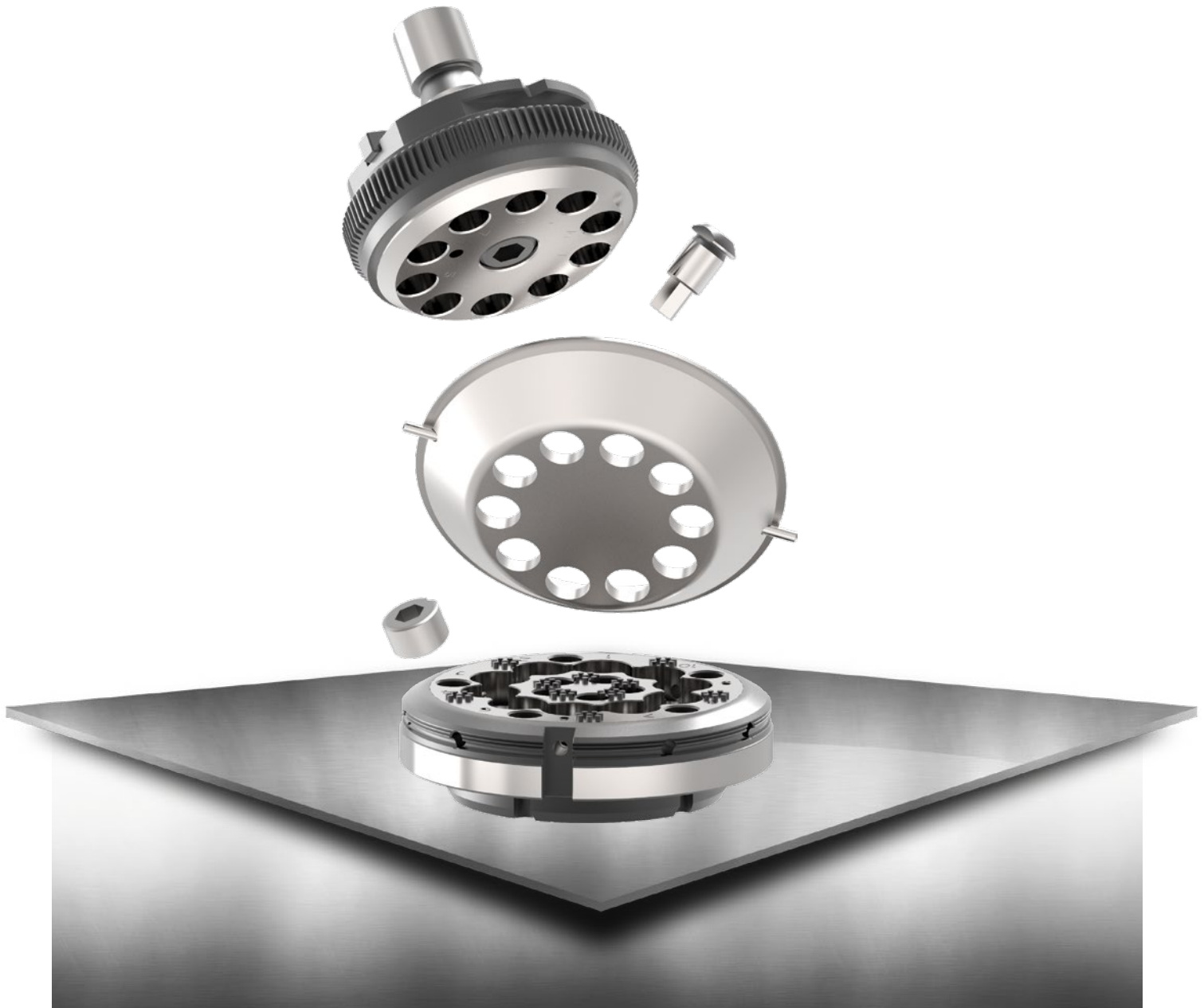




PRICE LIST 09/2024-VVW-T.1

SYSTEM TRUMPF

PRICE LIST 09/2024-WW-T.1



VALIDITY OF PRICES:

This price list is valid from 01.09.2024. From this date old price lists lose their validity. The prices do not include statutory value added tax.

CONDITIONS OF PAYMENT:

Unless otherwise stipulated, our invoices are payable in full 30 days after the submission of the invoice.

SCOPE OF APPLICATION:

Deliveries and services provided by PASS Stanztechnik AG are effected exclusively according to PASS delivery and payment conditions. These conditions shall be deemed accepted at the latest upon receipt of the goods or services.

GENERAL REMARKS:

You can find our general terms and conditions on our Homepage under: www.pass-ag.com

PUNCHING TOOLS

Standard Tools Round.....	page 6
Standard Tools Square.....	page 7
Standard Tools Rectangle.....	page 8
Standard Tools Oblong.....	page 9
Special Shape Tools Group 1.....	page 10
Special Shape Tools Group 2.....	page 11
Special Shape Tools Group 3.....	page 12
Special Shape Tools Group 4.....	page 13
Punch with Guided Cutting Part - Round.....	page 14
Punch with Guided Cutting Part - Form.....	page 15

MULTITOOLS

ps:®MT5 for punching.....	page 18
ps:®MT10 for punching.....	page 19
ps:®easy-type.....	page 20
ps:®MT10 for embossing.....	page 21
Inserts Multitool 4-Station.....	page 22
Inserts Multitool 6-Station.....	page 23
ps:®MT10 cutting die.....	page 24

SLITTING TOOLS

ps:®T8-shear size 2 / 5 X 76,2.....	page 28
ps:®T8-trim size 2 / 18 X 73.....	page 29
Slitting Tool size 2 / 5 x 30 - Standard.....	page 30
Slitting Tool size 2 / 5 x 56 - Standard.....	page 31
Slitting Tool size 2 / 5 x 76,2 - Standard.....	page 32
Slitting Tool size 2 / 5 x 56 - spring loaded.....	page 33
Slitting Tool size 2 / 5 x 56 - PU.....	page 34
Slitting Tool size 2 / 5 x 76,2 - PU.....	page 35

SPECIAL TOOLS

Centre Punch Tool from Above.....	page 38
Centre Punch Tool from Below.....	page 39
ps:®signing.....	page 40
ps:®engraving.....	page 41
ps:®single-thread.....	page 42

ACCESSORIES

Adjusting rings.....	page 46
Punch Chucks, Adapter Rings.....	page 47
Adjustment Unit for Punch.....	page 48
Shims for Dies.....	page 49
Soft pads.....	page 50
ps:®passfit.....	page 51
ps:®3D-RTC - cartridge plastic size 2.....	page 52
ps:®3D-RTC - cartridge plastic size 5.....	page 53

PASS TOOLS SIZE 3 AND SPECIFIC TOOLING FOR BOSCHERT PUNCHING MACHINES

Punching Tools (Standard) size 3.....	page 56
Punching Tools (Form) size 3.....	page 57
Adapter and Manual Adjusting Rings.....	page 58
Slitting Tool size 2.....	page 59
Slitting Tool size 3.....	page 60
PU stripper.....	page 61

EXTRA EQUIPMENT

Spare parts.....	page 64
Push-out stripper.....	page 65
Punch coatings.....	page 66
Draw-polishing.....	page 67
Punches with different shear types.....	page 68
slug-snap for dies.....	page 69
Index.....	page 71



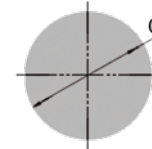
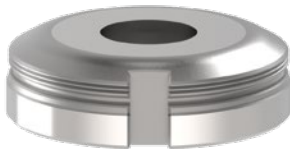
RE-EXPERIENCE THE STANDARD: PUNCHING TOOLS

PASS TOOLS FOR YOUR
TRUMPF SYSTEM

INDEX

Standard Tools Round	page 6
Standard Tools Square	page 7
Standard Tools Rectangle	page 8
Standard Tools Oblong	page 9
Special Shape Tools Group 1	page 10
Special Shape Tools Group 2	page 11
Special Shape Tools Group 3	page 12
Special Shape Tools Group 4	page 13
Punch with Guided Cutting Part - Round	page 14
Punch with Guided Cutting Part - Form	page 15

STANDARD TOOLS ROUND

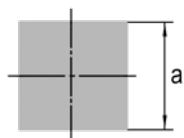


	SIZE	DIM. D	PART-NO.	PRICE IN €
PUNCH (H-PM®)				
	0	1,00 - 6,00	107A01C	11,49
	0	6,01 - 10,50 ⁽¹⁾	107B01C	14,05
	1	1,00 - 30,50	101111C	34,43
	2	30,51 - 40,00	101211C	67,27
	2	40,01 - 50,80	101221C	74,95
	2	50,81 - 60,00	101231C	79,50
	2	60,01 - 72,00	101241C	93,30
	2	72,01 - 76,20	101251C	99,41
	Reinforced	1,00 - 30,50	108111C	101,92
	Reinforced	30,51 - 40,00	108121C	109,56
STRIPPER				
	2	1,00 - 78,00	112211C	26,78
DIE (HWS)				
	1 ⁽²⁾	1,00 - 32,00	106111C	35,66
	2 ⁽³⁾	32,01 - 77,00	106211C	68,80
	1 reinforced ⁽²⁾	1,00 - 32,00	109111C	38,22
	2 reinforced ⁽³⁾	32,01 - 42,00	109221C	117,20
	2 reinforced ⁽³⁾	42,01 - 62,00	109231C	124,85

PUNCH OPTIONS		Cross references:		see page
Punches with shear (WT / DOWT / etc.) -> see page 68		PUNCH		
⁽¹⁾ smaller 6,00 mm	5,10	Fully guided punch		14
Cutting part under 1,00 mm	+ 40 %	Adjusting rings		46
X3-PM quality	on request	Punch chuck		47
		Additional costs for coating		66
		Polished cutting part		67
STRIPPER OPTIONS		STRIPPER		
PU coating for low-scratch material handling	140,13	Spare parts		64
		PU stripper		61
DIE OPTIONS		DIE		
⁽²⁾ H-PM® quality	3,86	Adapter rings		47
⁽³⁾ H-PM® quality	6,40	Compensating rings		49
Slug-stop version (negative cutting)	without extra charge	RTC cartridge and die carrier		52
Brush version for low-scratch material handling	62,14	Keyway clamps		64
X8-PM quality	on request	Slug-snap version (for slug-problems)		69

STANDARD TOOLS SQUARE

	SIZE	DIM. A	PART-NO.	PRICE IN €
PUNCH (H-PM®)				
	0	1,00 - 4,20	107A02C	31,88
	0	4,21 - 7,40 ^(*)	107B02C	44,61
	1	1,00 - 21,55	101112C	57,35
	2	21,56 - 28,25	101212C	91,72
	2	28,26 - 35,90	101222C	100,68
	2	35,91 - 42,40	101232C	113,42
	2	42,41 - 50,90	101242C	122,31
	2	50,91 - 53,90	101252C	127,41
	Reinforced	1,00 - 21,55	108112C	132,49
	Reinforced	21,56 - 28,25	108122C	142,68
STRIPPER				
	2	1,00 - 56,00	112212C	44,61
DIE (HWS)				
	1 ⁽²⁾	1,00 - 22,50	106112C	61,15
	2 ⁽³⁾	22,51 - 54,90	106212C	105,78
	1 reinforced ⁽²⁾	1,00 - 22,50	109112C	63,71
	2 reinforced ⁽³⁾	22,51 - 30,20	109222C	173,26
	2 reinforced ⁽³⁾	30,21 - 43,00	109232C	180,91



	Cross references:	see page
PUNCH OPTIONS		
Punches with shear (WT / DOWT / etc.) -> see page 68	PUNCH	
^(*) smaller 4,20 mm	Fully guided punch	15
Cutting part under 1,00 mm	5,10 Adjusting rings	46
4 x same corner radius	+ 40 % Punch chuck	47
X3-PM quality	+ 10 % ps:®passfit - explanation and additional costs	51
	on request Additional costs for coating	66
	Polished cutting part	67
STRIPPER OPTIONS		
PU coating for low-scratch material handling	STRIPPER	
	Spare parts	64
	Push-out stripper	65
	PU stripper	61
DIE OPTIONS		
⁽²⁾ H-PM® quality	DIE	
⁽³⁾ H-PM® quality	Adapter rings	47
Slug-stop version (negative cutting)	Compensating rings	49
Additional keyway	without extra charge RTC cartridge and die carrier	52
Brush version for low-scratch material handling	16,17 Keyway clamps	64
X8-PM quality	62,14 Slug-snap version (for slug-problems)	69
	on request	

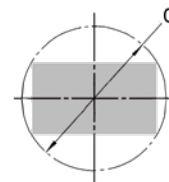
STANDARD TOOLS RECTANGLE



SIZE	DIM. D	PART-NO.	PRICE IN €
PUNCH (H-PM®)			
0	1,00 - 6,00	107A03C	40,76
0	6,01 - 10,50 ⁽¹⁾	107B03C	52,26
1	1,00 - 30,50	101113C	65,02
2	30,51 - 40,00	101213C	104,46
2	40,01 - 50,80	101223C	131,25
2	50,81 - 60,00	101233C	136,34
2	60,01 - 72,00	101243C	141,44
2	72,01 - 76,20	101253C	146,55
Reinforced	1,00 - 30,50	108113C	144,00
Reinforced	30,51 - 40,00	108123C	157,97

STRIPPER			
2	1,00 - 78,00	112213C	61,15

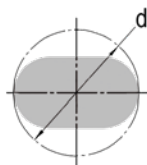
DIE (HWS)			
1 ⁽²⁾	1,00 - 32,00	106113C	68,80
2 ⁽³⁾	32,01 - 77,00	106213C	113,42
1 reinforced ⁽²⁾	1,00 - 32,00	109113C	71,34
2 reinforced ⁽³⁾	32,01 - 42,00	109223C	175,80
2 reinforced ⁽³⁾	42,01 - 62,00	109233C	183,45



PUNCH OPTIONS		Cross references:	see page
Punches with shear (WT / DOWT / etc.) -> see page 68		PUNCH	
⁽¹⁾ smaller 6,00 mm	5,10	Fully guided punch	15
Cutting part under 1,00 mm	+ 40 %	Slitting punches for slittings close to embossing	34 - 35
4 x same corner radius	+ 10 %	Adjusting rings	46
X3-PM quality	on request	Punch chuck	47
		ps:®passfit - explanation and additional costs	51
		Additional costs for coating	66
		Polished cutting part	67
STRIPPER OPTIONS		STRIPPER	
PU coating for low-scratch material handling	140,13	Spare parts	64
		Push-out stripper	65
		PU stripper	61
DIE OPTIONS		DIE	
⁽²⁾ H-PM® quality	3,86	Adapter rings	47
⁽³⁾ H-PM® quality	6,40	Compensating rings	49
Slug-stop version (negative cutting)	without extra charge	RTC cartridge and die carrier	52
Additional keyway	16,17	Keyway clamps	64
Brush version for low-scratch material handling	62,14	Slug-snap version (for slug-problems)	69
X8-PM quality	on request		

STANDARD TOOLS OBLONG

	SIZE	DIM. D	PART-NO.	PRICE IN €
PUNCH (H-PM®)				
	0	1,00 - 6,00	107A04C	43,32
	0	6,01 - 10,50 ^(*)	107B04C	54,81
	1	1,00 - 30,50	101114C	67,55
	2	30,51 - 40,00	101214C	107,01
	2	40,01 - 50,80	101224C	133,79
	2	50,81 - 60,00	101234C	142,68
	2	60,01 - 72,00	101244C	147,79
	2	72,01 - 76,20	101254C	155,43
	Reinforced	1,00 - 30,50	108114C	154,18
	Reinforced	30,51 - 40,00	108124C	168,17
STRIPPER				
	2	1,00 - 78,00	112214C	61,15
DIE (HWS)				
	1 ⁽²⁾	1,00 - 32,00	106114C	68,80
	2 ⁽³⁾	32,01 - 77,00	106214C	113,42
	1 reinforced ⁽²⁾	1,00 - 32,00	109114C	71,34
	2 reinforced ⁽³⁾	32,01 - 42,00	109224C	175,80
	2 reinforced ⁽³⁾	42,01 - 62,00	109234C	183,45



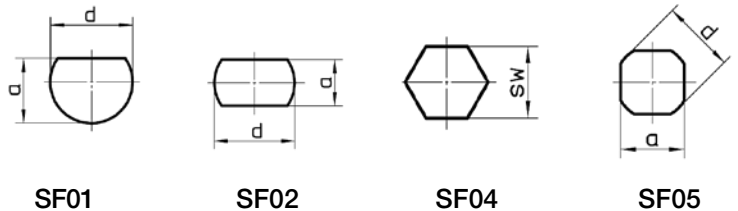
	Cross references:	see page
PUNCH OPTIONS		
Punches with shear (WT / DOWT / etc.) -> see page 68	PUNCH	
^(*) smaller 6,00 mm	Fully guided punch	15
Cutting part under 1,00 mm	5,10 Slitting punches for slittings close to embossing	34 - 35
X3-PM quality	+ 40 % Adjusting rings	46
	on request Punch chuck	47
	ps:®passfit - explanation and additional costs	51
	Additional costs for coating	66
	Polished cutting part	67
STRIPPER OPTIONS		
PU coating for low-scratch material handling	STRIPPER	
140,13	Spare parts	64
	Push-out stripper	65
	PU stripper	61
DIE OPTIONS		
⁽²⁾ H-PM® quality	DIE	
⁽³⁾ H-PM® quality	Adapter rings	47
Slug-stop version (negative cutting)	Compensating rings	49
Additional keyway	without extra charge RTC cartridge and die carrier	52
Brush version for low-scratch material handling	16,17 Keyway clamps	64
X8-PM quality	62,14 Slug-snap version (for slug-problems)	69
	on request	

SPECIAL SHAPE TOOLS GROUP 1

(SF01, SF02, SF04, SF05)



	SIZE	DIM. D	PART-NO.	PRICE IN €
PUNCH (H-PM®)				
	0	1,00 - 6,00	121A0_C1	47,17
	0	6,01 - 10,50 ⁽¹⁾	121B0_C1	57,35
	1	1,00 - 30,50	12111_C1	72,65
	2	30,51 - 40,00	12121_C1	112,10
	2	40,01 - 50,80	12122_C1	140,13
	2	50,81 - 60,00	12123_C1	149,08
	2	60,01 - 72,00	12124_C1	154,18
	2	72,01 - 76,20	12125_C1	163,08
	Reinforced	1,00 - 30,50	V2111_C1	161,82
	Reinforced	30,51 - 40,00	121V1_C1	174,56
STRIPPER				
	2	1,00 - 78,00	127H1_C1	67,55
DIE (HWS)				
	1 ⁽²⁾	1,00 - 32,00	12611_C1	87,93
	2 ⁽³⁾	32,01 - 77,00	12621_C1	137,58
	1 reinforced ⁽²⁾	1,00 - 32,00	V2611_C1	91,72
	2 reinforced ⁽³⁾	32,01 - 42,00	126V1_C1	203,83
	2 reinforced ⁽³⁾	42,01 - 62,00	126V2_C1	208,93

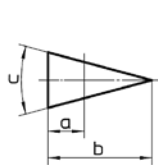


PUNCH OPTIONS		Cross references:		see page
PUNCHES WITH SHEAR (WT / DOWT / etc.) -> see page 68		PUNCH		
		Fully guided punch		15
⁽¹⁾ smaller 6,00 mm	5,10	Adjusting rings		46
Cutting part under 1,00 mm	+ 40 %	Punch chuck		47
X3-PM quality	on request	ps:®passfit - explanation and additional costs		51
		Additional costs for coating		66
		Polished cutting part		67
STRIPPER OPTIONS		STRIPPER		
PU coating for low-scratch material handling	140,13	Spare parts		64
		PU stripper		61
DIE OPTIONS		DIE		
⁽²⁾ H-PM® quality	3,86	Adapter rings		47
⁽³⁾ H-PM® quality	6,40	Compensating rings		49
Slug-stop version (negative cutting)	without extra charge	RTC cartridge and die carrier		52
Additional keyway	16,17	Keyway clamps		64
Brush version for low-scratch material handling	62,14	Slug-snap version (for slug-problems)		69
X8-PM quality	on request			

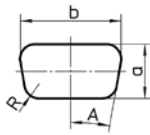
SPECIAL SHAPE TOOLS GROUP 2

(SF03, SF07, SF13, SF17)

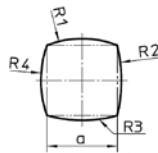
	SIZE	DIM. D	PART-NO.	PRICE IN €
PUNCH (H-PM®)				
	0	1,00 - 6,00	121A0_C2	65,02
	0	6,01 - 10,50 ^(*)	121B0_C2	70,09
	1	1,00 - 30,50	12111_C2	86,62
	2	30,51 - 40,00	12121_C2	117,20
	2	40,01 - 50,80	12122_C2	145,23
	2	50,81 - 60,00	12123_C2	154,18
	2	60,01 - 72,00	12124_C2	159,27
	2	72,01 - 76,20	12125_C2	168,17
	Reinforced	1,00 - 30,50	V2111_C2	166,91
	Reinforced	30,51 - 40,00	121V1_C2	179,67
STRIPPER				
	2	1,00 - 78,00	127H1_C2	67,55
DIE (HWS)				
	1 ^(**)	1,00 - 32,00	12611_C2	87,93
	2 ^(***)	32,01 - 77,00	12621_C2	137,58
	1 reinforced ^(**)	1,00 - 32,00	V2611_C2	91,72
	2 reinforced ^(***)	32,01 - 42,00	126V1_C2	203,83
	2 reinforced ^(***)	42,01 - 62,00	126V2_C2	208,93



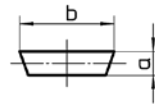
SF03



SF07



SF13



SF17



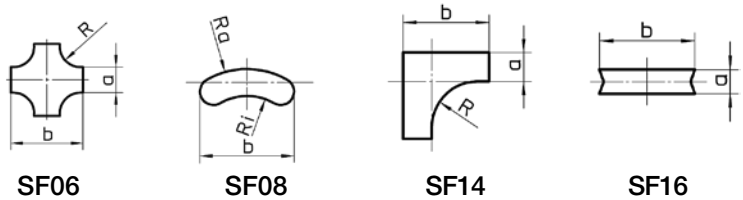
		Cross references:	see page
PUNCH OPTIONS		PUNCH	
Punches with shear (WT / DOWT / etc.) -> see page 68		Fully guided punch	15
^(*) smaller 6,00 mm		5,10 Slitting punches for slittings close to embossing	34 - 35
Cutting part under 1,00 mm		+ 40 % Adjusting rings	46
X3-PM quality	on request	Punch chuck	47
		ps:®passfit - explanation and additional costs	51
		Additional costs for coating	66
		Polished cutting part	67
STRIPPER OPTIONS		STRIPPER	
PU coating for low-scratch material handling	140,13	Spare parts	64
		Push-out stripper	65
		PU stripper	61
DIE OPTIONS		DIE	
^(**) H-PM® quality	3,86	Adapter rings	47
^(***) H-PM® quality	6,40	Compensating rings	49
Slug-stop version (negative cutting)	without extra charge	RTC cartridge and die carrier	52
Additional keyway	16,17	Keyway clamps	64
Brush version for low-scratch material handling	62,14	Slug-snap version (for slug-problems)	69
X8-PM quality	on request		

SPECIAL SHAPE TOOLS GROUP 3

(SF06, SF08, SF14, SF16)



SIZE	DIM. D	PART-NO.	PRICE IN €
PUNCH (H-PM®)			
0	1,00 - 6,00	121A0_C3	81,53
0	6,01 - 10,50 ⁽¹⁾	121B0_C3	85,38
1	1,00 - 30,50	12111_C3	142,68
2	30,51 - 40,00	12121_C3	179,67
2	40,01 - 50,80	12122_C3	223,19
2	50,81 - 60,00	12123_C3	232,37
2	60,01 - 72,00	12124_C3	240,05
2	72,01 - 76,20	12125_C3	249,22
Reinforced	1,00 - 30,50	V2111_C3	220,42
Reinforced	30,51 - 40,00	121V1_C3	226,77
STRIPPER			
2	1,00 - 78,00	127H1_C3	68,80
DIE (HWS)			
1 ⁽²⁾	1,00 - 32,00	12611_C3	101,92
2 ⁽³⁾	32,01 - 77,00	12621_C3	168,17
1 reinforced ⁽²⁾	1,00 - 32,00	V2611_C3	105,78
2 reinforced ⁽³⁾	32,01 - 42,00	126V1_C3	214,03
2 reinforced ⁽³⁾	42,01 - 62,00	126V2_C3	224,21

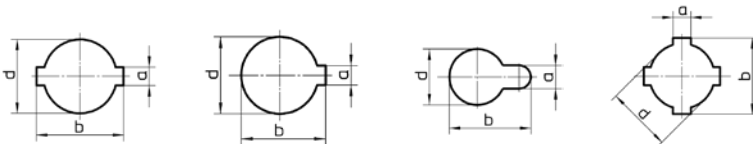


		Cross references:	see page
PUNCH OPTIONS		PUNCH	
Punches with shear (WT / DOWT / etc.) -> see page 68		Fully guided punch	15
⁽¹⁾ smaller 6,00 mm	5,10	Slitting punches for slittings close to embossing	34 - 35
Cutting part under 1,00 mm	+ 40 %	Adjusting rings	46
X3-PM quality	on request	Punch chuck	47
		ps:®passfit - explanation and additional costs	51
		Additional costs for coating	66
		Polished cutting part	67
STRIPPER OPTIONS		STRIPPER	
PU coating for low-scratch material handling	140,13	Spare parts	64
		Push-out stripper	65
		PU stripper	61
DIE OPTIONS		DIE	
⁽²⁾ H-PM® quality	3,86	Adapter rings	47
⁽³⁾ H-PM® quality	6,40	Compensating rings	49
Slug-stop version (negative cutting)	without extra charge	RTC cartridge and die carrier	52
Additional keyway	16,17	Keyway clamps	64
Brush version for low-scratch material handling	62,14	Slug-snap version (for slug-problems)	69
X8-PM quality	on request		

SPECIAL SHAPE TOOLS GROUP 4

(SF09, SF10, SF11, SF12)

	SIZE	DIM. D	PART-NO.	PRICE IN €
PUNCH (H-PM®)				
	0	1,00 - 6,00	121A0_C4	89,19
	0	6,01 - 10,50 ^(*)	121B0_C4	95,58
	1	1,00 - 30,50	12111_C4	168,17
	2	30,51 - 40,00	12121_C4	196,19
	2	40,01 - 50,80	12122_C4	244,60
	2	50,81 - 60,00	12123_C4	252,28
	2	60,01 - 72,00	12124_C4	261,46
	2	72,01 - 76,20	12125_C4	269,05
	Reinforced	1,00 - 30,50	V2111_C4	238,27
	Reinforced	30,51 - 40,00	121V1_C4	247,16
STRIPPER				
	2	1,00 - 78,00	127H1_C4	68,80
DIE (HWS)				
	1 ⁽²⁾	1,00 - 32,00	12611_C4	101,92
	2 ⁽³⁾	32,01 - 77,00	12621_C4	168,17
	1 reinforced ⁽²⁾	1,00 - 32,00	V2611_C4	105,78
	2 reinforced ⁽³⁾	32,01 - 42,00	126V1_C4	214,03
	2 reinforced ⁽³⁾	42,01 - 62,00	126V2_C4	224,21

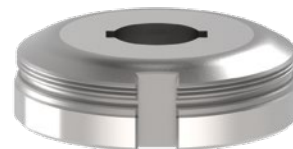


SF09

SF10

SF11

SF12



	Cross references:	see page
PUNCH OPTIONS		
Punches with shear (WT / DOWT / etc.) -> see page 68	PUNCH	
^(*) smaller 6,00 mm	Fully guided punch	15
Cutting part under 1,00 mm	5,10 Adjusting rings	46
X3-PM quality	+ 40 % Punch chuck	47
	on request ps:®passfit - explanation and additional costs	51
	Additional costs for coating	66
	Polished cutting part	67
STRIPPER OPTIONS		
PU coating for low-scratch material handling	STRIPPER	
140,13	Spare parts	64
	PU stripper	61
DIE OPTIONS		
⁽²⁾ H-PM® quality	DIE	
3,86	Adapter rings	47
⁽³⁾ H-PM® quality	6,40 Compensating rings	49
Slug-stop version (negative cutting)	without extra charge RTC cartridge and die carrier	52
Additional keyway	16,17 Keyway clamps	64
Brush version for low-scratch material handling	62,14 Slug-snap version (for slug-problems)	69
X8-PM quality<GT>	on request	

PUNCH WITH GUIDED CUTTING PART - ROUND

FOR ROUND PUNCH (DIMENSION D = 0,50 MM – 6,00 MM / 6,01 MM – 10,50 MM)



DESCRIPTION	POSITION	PART-NO.	PRICE IN €
UP TO 6,00 MM			
Complete upper part	1 - 5	1S160A	388,59
Stripper round 26 mm	6	112211C26	26,78
Die (HWS) ⁽²⁾	7	106111C	35,66

SPARE PARTS			
Spare punch needle (H-PM [®])	2	1S16SA	28,03
Spare spring	3	1S1608	5,10
Spare guide	5	1S1603	72,65
Spare clamp nut	4	1S1607	50,95

UP TO 10,50 MM			
Complete upper part ⁽¹⁾	1 - 5	1S160B	391,13
Stripper round 26 mm	6	112211C26	26,78
Die (HWS) ⁽²⁾	7	106111C	35,66

SPARE PARTS			
Spare punch needle (H-PM [®]) ⁽¹⁾	2	1S16SB	30,59
Spare spring	3	1S1609	5,10
Spare guide	5	1S1604	72,65
Spare clamp nut	4	1S1607	50,95

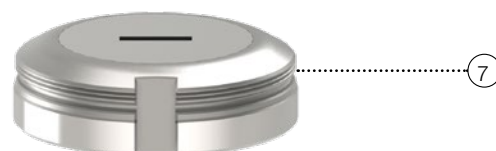
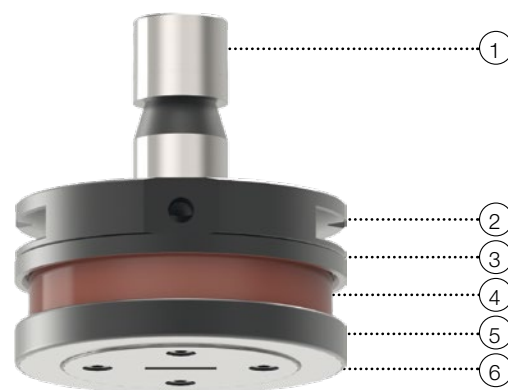
Cross references: see page

PUNCH OPTIONS		PUNCH	
⁽¹⁾ smaller 6,00 mm	5,10	Standard round punch	6
Cutting part under 1,00 mm	+ 40 %	Suitable adjusting ring - part-no. 118101	46
		Punch chuck	47
		Additional costs for coating (such as size 0)	66
		Polished cutting part (such as size 0)	67
STRIPPER OPTIONS		STRIPPER	
PU coating for low-scratch material handling	140,13	Spare parts	64
DIE OPTIONS		DIE	
⁽²⁾ H-PM [®] quality	3,86	Adapter rings	47
Brush version for low-scratch material handling	62,14	Compensating rings	49
		RTC cartridge and die carrier	52
		Slug-snap version (for slug-problems)	69

PUNCH WITH GUIDED CUTTING PART - FORM

FOR FORM PUNCH (DIMENSION D = 0,50 MM – 16,00 MM)

DESCRIPTION	POSITION	PART-NO.	PRICE IN €
SQUARE			
Complete upper part	1 - 6	1S16502	768,23
Spare punch (H-PM®)	3	1S16532	119,74
Spare spring	4	1S16540	58,60
Spare guide	6	1S16562	91,72
Die (HWS) ⁽²⁾	7	106112C	61,15
RECTANGLE			
Complete upper part	1 - 6	1S16503	782,21
Spare punch (H-PM®)	3	1S16533	129,96
Spare spring	4	1S16540	58,60
Spare guide	6	1S16563	94,27
Die (HWS) ⁽²⁾	7	106113C	68,80
OBLONG			
Complete upper part	1 - 6	1S16504	817,88
Spare punch (H-PM®)	3	1S16534	165,62
Spare spring	4	1S16540	58,60
Spare guide	6	1S16564	94,27
Die (HWS) ⁽²⁾	7	106114C	68,80
SPECIAL SHAPES			
Complete upper part	1 - 6		on request
Spare punch (H-PM®)	3		on request
Spare spring	4		on request
Spare guide	6		on request
Die (HWS) ⁽²⁾	7		on request



Cross references: see page

PUNCH OPTIONS	PUNCH	see page
Cutting part under 1,00 mm	+ 40 % Standard punch	from 7
	Punch chuck	47
	Additional costs for coating (such as size 1)	66
	Polished cutting part (such as size 1)	67

STRIPPER OPTIONS	STRIPPER	see page
Polished version for low-scratch material handling	21,12 Spare parts	64

DIE OPTIONS	DIE	see page
⁽²⁾ H-PM® quality	3,86 Adapter rings	47
Brush version for low-scratch material handling	62,14 Compensating rings	49
	RTC cartridge and die carrier	52
	Keyway clamps	64
	Slug-snap version (for slug-problems)	69



BEING MULTILATERAL: MULTITOOLS

PASS TOOLS FOR YOUR
TRUMPF SYSTEM

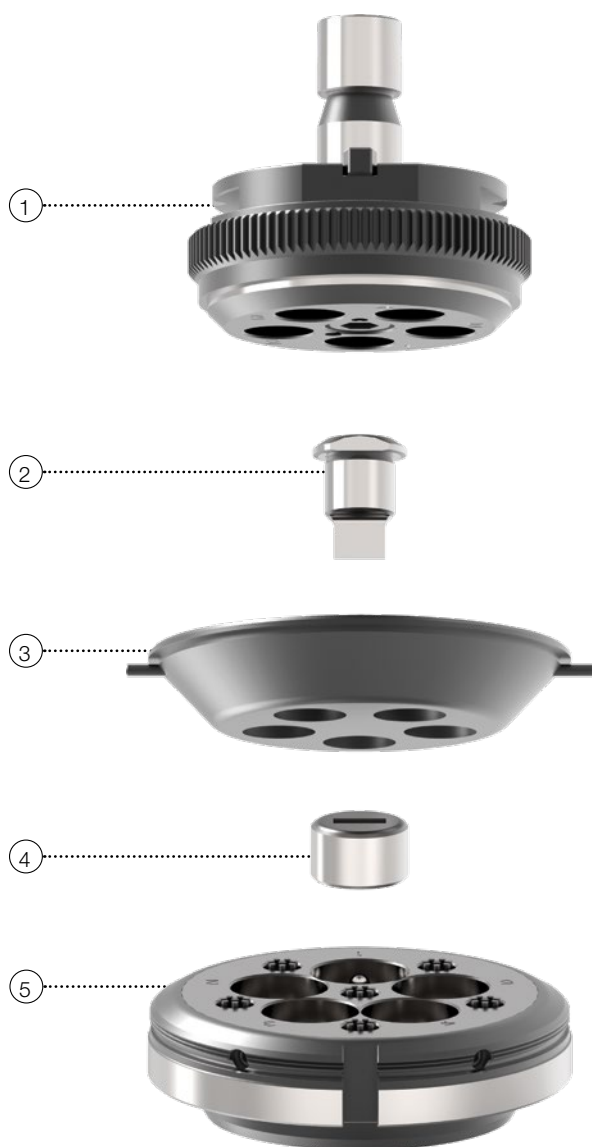
INDEX

ps:®MT5 for punching	page 18
ps:®MT10 for punching	page 19
ps:®easy-type	page 20
ps:®MT10 for embossing	page 21
Inserts Multitool 4-Station	page 22
Inserts Multitool 6-Station	page 23
ps:®MT10 cutting die	page 24

ps:®MT5 FOR PUNCHING

FOR MACHINE GROUP I (DIMENSION 1,00 MM – 16,00 MM)

(TRUPUNCH1000, 2000, 2020, 3000, 5000 TRUMATIC1000, 3000, 6000, 7000)



DESCRIPTION	POSITION	PART-NO.	PRICE IN €
PUNCH HOLDER			
Punch holder	1	113S30	1799,62
PUNCH (H-PM®)			
Round	2	113N31	36,97
Square	2	113N32	44,61
Rectangle	2	113N33	47,17
Oblong	2	113N34	47,17
Special shape	2		on request
STRIPPER			
Round 17	3	115A30	72,03
With PU surface round 17	3*	115PU30	211,99
With customized shape	3*	115B30	163,08
DIES (H-PM®)			
Round	4	114031	34,43
Square	4	114032	47,17
Rectangle	4	114033	47,17
Oblong	4	114034	47,17
Special shape	4		on request
DIE HOLDER			
Die holder	5	114Z30	807,04

* no picture

Cross references: see page

PUNCH AND PUNCH HOLDER OPTIONS		PUNCH	
Max. sheet thickness - steel and alu up to 4,50 mm / stainless steel up to 3,00 mm		Types of special shapes	10 - 13
Cutting part under 1,00 mm	+ 40 %	Additional costs for coating (Multitool)	66
		Polished cutting part (Multitool)	67

STRIPPER OPTIONS		STRIPPER	
Polished version for low-scratch material handling	21,12	Spare parts	64

DIE OPTIONS		DIE	
Slug-stop version (negative cutting)	without extra charge	RTC cartridge and die carrier	52
Set of shims: (2xt = 0,1 / 2xt = 0,3 / 2xt = 0,5) - part-no. 114U3M	10,21	Slug-snap version (for slug-problems)	69

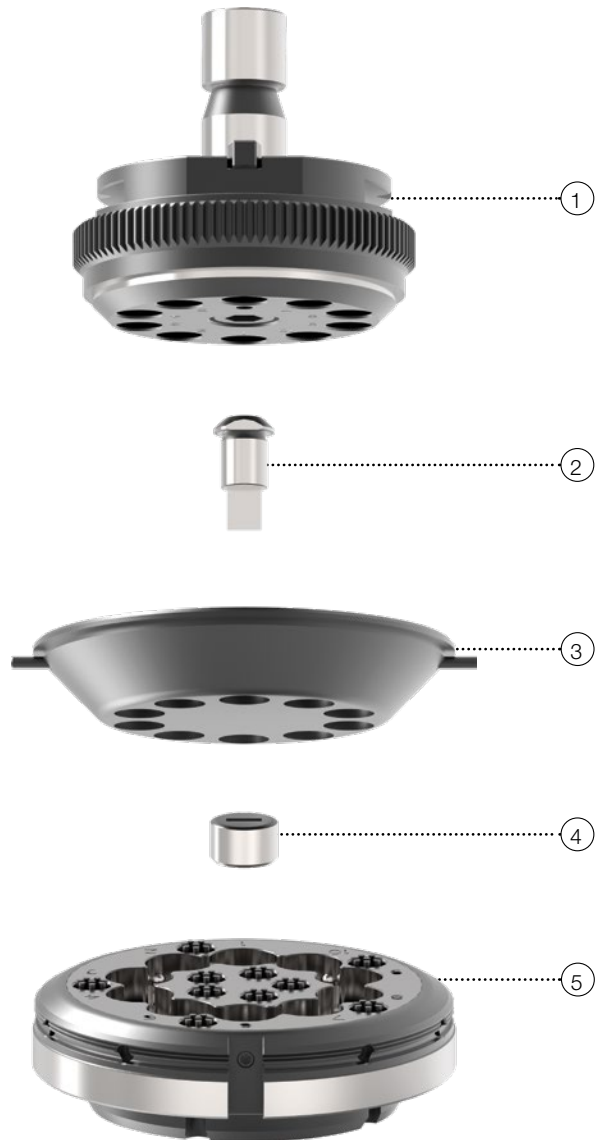
ps:®MT10 FOR PUNCHING

FOR MACHINE GROUP I (DIMENSION 1,00 MM – 10,50 MM)

(TRUPUNCH1000, 2000, 2020, 3000, 5000 TRUMATIC1000, 3000, 6000, 7000)

DESCRIPTION	POSITION	PART-NO.	PRICE IN €
PUNCH HOLDER			
Punch holder	1	113S40	1949,58
PUNCH (H-PM®)			
Round	2	113N41	36,97
Square	2	113N42	44,61
Rectangle	2	113N43	47,17
Oblong	2	113N44	47,17
Special shape	2		on request
STRIPPER			
Round 12	3	115A40	80,51
With PU surface round 12	3*	115PU40	223,39
With customized shape	3*	115B40	191,10
DIES (H-PM®)			
Round	4	114041	34,43
Square	4	114042	47,17
Rectangle	4	114043	47,17
Oblong	4	114044	47,17
Special shape	4		on request
DIE HOLDER			
Die holder	5	114Z40	945,39

* no picture



Cross references: see page

PUNCH AND PUNCH HOLDER OPTIONS	PUNCH	see page
Max. sheet thickness - steel and alu up to 4,50 mm / stainless steel up to 3,00 mm	Types of special shapes	10 - 13
Cutting part under 1,00 mm + 40 %	Additional costs for coating (Multitool)	66
	Polished cutting part (Multitool)	67

STRIPPER OPTIONS	STRIPPER	see page
Polished version for low-scratch material handling	Spare parts	64

DIE OPTIONS	DIE	see page
Slug-stop version (negative cutting)	without extra charge	Version as one piece die insert
Set of shims: (2xt = 0,1 / 2xt = 0,3 / 2xt = 0,5) - part-no. 114U4M	9,45	RTC cartridge and die carrier
		Slug-snap version (for slug-problems)
		69

ps:® easy-type

FOR MACHINE GROUP I

(TRUPUNCH1000, 2000, 2020, 3000, 5000 TRUMATIC1000, 3000, 6000, 7000)



DESCRIPTION	POSITION	PART-NO.	PRICE IN €
PUNCH HOLDER			
Punch holder	1	113S30	1799,62
PUNCH (SET CONSISTS OF: o, u, C, l, I)			
Set with letter height 4 mm	2	Z677450	891,00
Set with letter height 5 mm	2	Z677492	891,00
Set with letter height 6 mm	2	Z677493	891,00
Set with letter height 8 mm	2	Z677511	891,00
Set with letter height 10 mm	2	Z677512	891,00
STRIPPER			
Round 17	3	115A30	72,03
With PU surface round 17	3*	115PU30	211,99
EMBOSSING DIE			
Embossing die	4	113PM10	59,40

* no picture

Cross references

STRIPPER OPTIONS

Stripper in polished version for low-scratch material handling

21,12

ACCESSORIES

RTC cartridge and die carrier -> see page 52

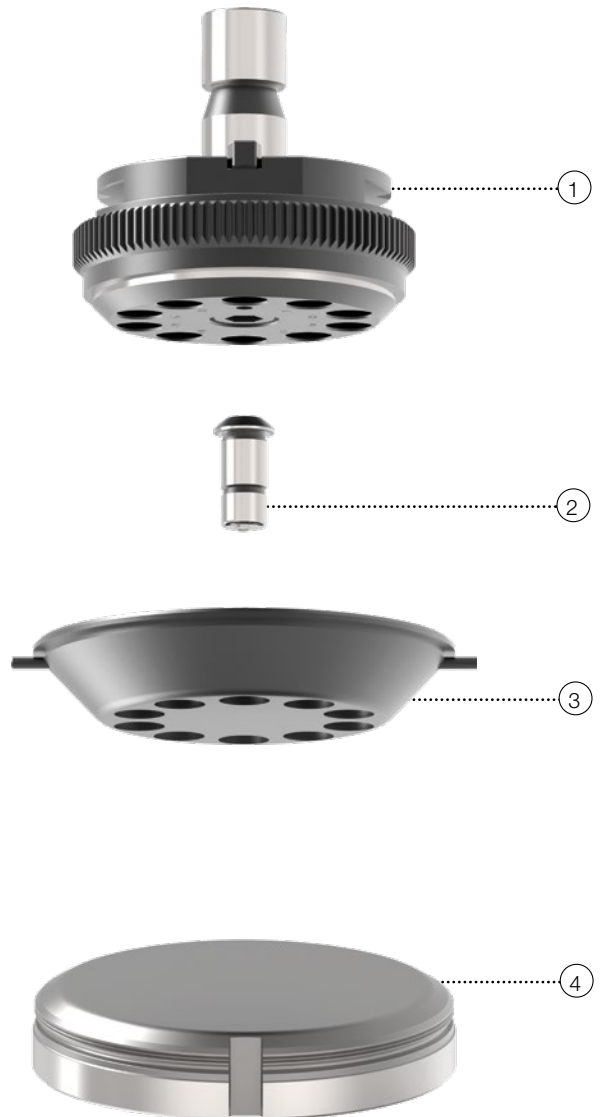
ps:® MT10 FOR EMBOSSING

FOR MACHINE GROUP I

(TRUPUNCH1000, 2000, 2020, 3000, 5000 TRUMATIC1000, 3000, 6000, 7000)

DESCRIPTION	POSITION	PART-NO.	PRICE IN €
PUNCH HOLDER			
Punch holder	1	113S40	1949,58
PUNCH INSERT			
Letter, digit or special sign on customer request	2	113P10_?	156,73
STRIPPER			
Round 12	3	115A40	80,51
With PU surface round 12	3*	115PU40	223,39
EMBOSSING DIE			
Embossing die	4	113PM10	59,40

* no picture



Cross references / Additional costs:

STRIPPER OPTIONS

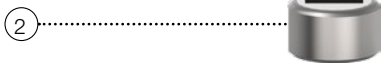
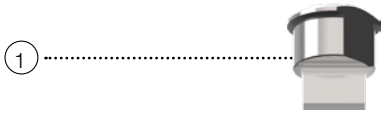
Stripper in polished version for low-scratch material handling 21,12

ACCESSORIES

RTC cartridge and die carrier -> see page 52

INSERTS MULTITOOL 4-STATION

FOR MACHINE GROUP H AND TC260 (DIMENSION 1,00 MM – 16,00 MM)
(TC600L, TC500R, TC200R, TC260R, TC260L)



DESCRIPTION	POSITION	PART-NO.	PRICE IN €
PUNCH (H-PM®)			
Round	1	113N11	36,97
Square	1	113N12	44,61
Rectangle	1	113N13	47,17
Oblong	1	113N14	47,17
Special shape	1		on request
DIES (H-PM®)			
Round	2	114011	34,43
Square	2	114012	47,17
Rectangle	2	114013	47,17
Oblong	2	114014	47,17
Special shape	2		on request

PUNCH OPTIONS		Cross references:	see page
Max. sheet thickness - steel and alu up to 3,00 mm / stainless steel up to 2,00 mm		PUNCH	
Cutting part under 1,00 mm	+ 40 %	Types of special shapes	10 - 13
		Additional costs for coating (Multitool)	66
		Polished cutting part (Multitool)	67

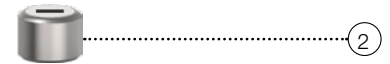
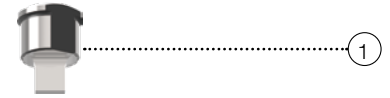
DIE OPTIONS		DIE	
Slug-stop version (negative cutting)	without extra charge	Slug-snap version (for slug-problems)	69
Set of shims: (2xt = 0,1 / 2xt = 0,3 / 2xt = 0,5) - part-no. 114U1M	10,20		

INSERTS MULTITOOL 6-STATION

FOR MACHINE GROUP H AND TC260 (DIMENSION 1,00 MM – 10,50 MM)

(TC600L, TC500R, TC200R, TC260R, TC260L)

DESCRIPTION	POSITION	PART-NO.	PRICE IN €
PUNCH (H-PM®)			
Round	1	113N21	36,97
Square	1	113N22	44,61
Rectangle	1	113N23	47,17
Oblong	1	113N24	47,17
Special shape	1		on request
DIES (H-PM®)			
Round	2	114021	34,43
Square	2	114022	47,17
Rectangle	2	114023	47,17
Oblong	2	114024	47,17
Special shape	2		on request



PUNCH OPTIONS	Cross references:	see page
Max. sheet thickness - steel and alu up to 3,00 mm / stainless steel up to 2,00 mm	PUNCH	
Cutting part under 1,00 mm	Types of special shapes	10 - 13
	Additional costs for coating (Multitool)	66
	Polished cutting part (Multitool)	67

DIE OPTIONS	DIE
Slug-stop version (negative cutting)	without extra charge
Set of shims: (2xt = 0,1 / 2xt = 0,3 / 2xt = 0,5) - part-no. 114U2M	10,20
	Slug-snap version (for slug-problems)
	69

ps:®MT10 CUTTING DIE

FOR MULTITOOL MACHINE GROUP I (DIMENSION 1,00 MM - 10,50 MM)

(TRUPUNCH1000, 2000, 2020, 3000, 5000 TRUMATIC1000, 3000, 6000, 7000)



DESCRIPTION	POSITION	PART-NO.	PRICE IN €
CUTTING DIE (H-PM®)			
Shapes on customer request	1	114941	365,83
CUTTING DIE HOLDER (*)			
Without cutting die, incl. 1 set of shims	2	114640	817,68

CUTTING DIE HOLDER AND CUTTING DIE OPTIONS	
Slug-stop version (negative cutting)	without extra charge
Slug-snap version (for slug-problems)	280,90
Set of shims: (2xt = 0,1 / 2xt = 0,3 / 2xt = 0,5) - part-no. 114U4MG	116,64

A large grid of graph paper for taking notes, consisting of 20 columns and 40 rows of small squares.



SLITTING TOOLS

PASS TOOLS FOR YOUR
TRUMPF SYSTEM

INDEX

ps:®T8-shear size 2 / 5 X 76,2	page 28
ps:®T8-trim size 2 / 18 X 73	page 29
Slitting Tool size 2 / 5 x 30 - Standard	page 30
Slitting Tool size 2 / 5 x 56 - Standard	page 31
Slitting Tool size 2 / 5 x 76,2 - Standard	page 32
Slitting Tool size 2 / 5 x 56 - spring loaded	page 33
Slitting Tool size 2 / 5 x 56 - PU	page 34
Slitting Tool size 2 / 5 x 76,2 - PU	page 35

ps:[®]T8-shear SIZE 2 / 5 X 76,2

INTEGRATED ADJUSTING RING AND DIE PLATE



DESCRIPTION	POSITION	PART-NO.	PRICE IN €
PUNCH			
With integrated adjusting ring	1	1S108100	475,21
STRIPPER			
Stripper	2	1S108110	104,46
DIE PLATE			
Single	3	1S108131	201,29
Pair	3*	1S108132	201,29
DIE PLATE HOLDER			
Without die plate	4	1S108120	1096,91

* no picture

PUNCH OPTIONS

Max. sheet thickness up to $s = 3,00$ mm

Cross references:

see page

PUNCH

Additional costs for coating

66

RTC cartridge and die carrier

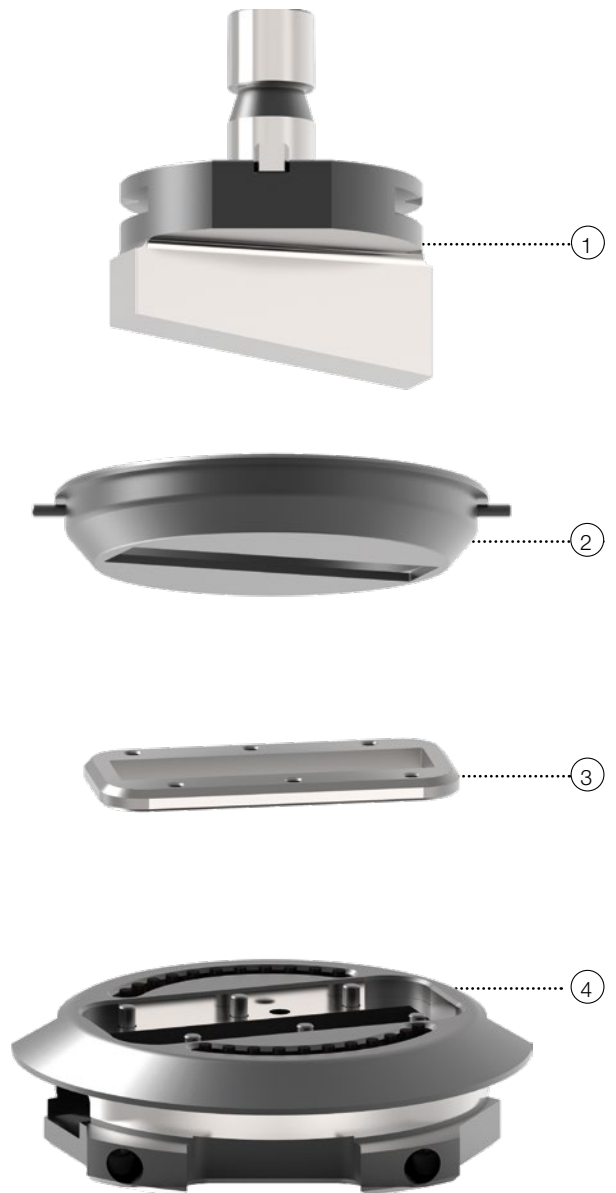
52

ps:[®]T8-trim SIZE 2 / 18 X 73

INTEGRATED ADJUSTING RING, DIE PLATE

DESCRIPTION	POSITION	PART-NO.	PRICE IN €
PUNCH			
With integrated adjusting ring	1	1S108200	709,29
STRIPPER			
Stripper	2	1S108210	104,46
DIE PLATE			
Single	3	1S108231	292,08
Pair	3*	1S108232	292,08
DIE PLATE HOLDER			
Without die plate	4	1S108220	1239,16

* no picture



Cross references: see page

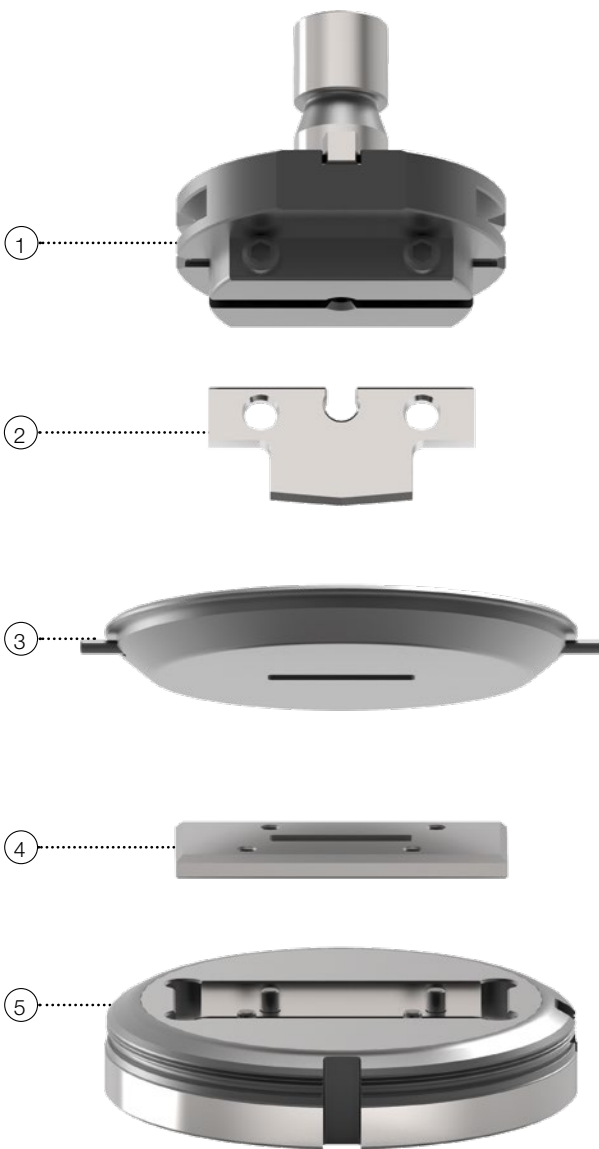
PUNCH OPTIONS	PUNCH	
Max. sheet thickness up to s = 3,00 mm	Additional costs for coating	66
	RTC cartridge and die carrier	52

CUTTING DIE HOLDER OPTIONS

Shim 0,3 mm - 1S108253	7,00
Shim 0,5 mm - 1S108255	7,00

SLITTING TOOL SIZE 2 / 5 X 30 - STANDARD

INTEGRATED ADJUSTING RING, SLITTING PUNCH BLADE, DIE PLATE



DESCRIPTION	POSITION	PART-NO.	PRICE IN €
COMPLETE TOOL ⁽¹⁾			
Oblong	1 - 5	1S0433110	747,84
Rectangle	1 - 5	1S0433120	747,84
Rectangle with 4 x R = 0,5	1 - 5	1S0433130	747,84
Trapezoid SF17	1 - 5	1S0433140	770,77
Double Trapezoid SF16	1 - 5	1S0433150	825,53
SLITTING PUNCH BLADE HOLDER (WITHOUT PUNCH BLADE INSERT)			
With integrated adjusting ring	1	1S0393	356,71
SLITTING PUNCH BLADE INSERT (H-PM®) ⁽¹⁾			
Oblong	2	1S04331	43,32
Rectangle	2	1S04332	43,32
Rectangle with 4 x R = 0,5	2	1S04333	43,32
Trapezoid SF17	2	1S04334	53,50
Double Trapezoid SF16	2	1S04335	99,37
STRIPPER			
Oblong	3	119234	61,15
Rectangle	3	119233	61,15
Rectangle with 4 x R = 0,5	3	119233	61,15
Trapezoid SF17	3	119237	67,55
Double Trapezoid SF16	3	119236	68,80
DIE PLATE (H-PM®)			
Oblong	4	1S17251	58,60
Rectangle ⁽²⁾	4	1S17252	58,60
Trapezoid SF17	4	1S17254	65,02
Double Trapezoid SF16	4	1S17255	72,65
DIE PLATE ADAPTER (WITHOUT DIE PLATE) ⁽³⁾			
Incl. screws	5	1S1730	228,07

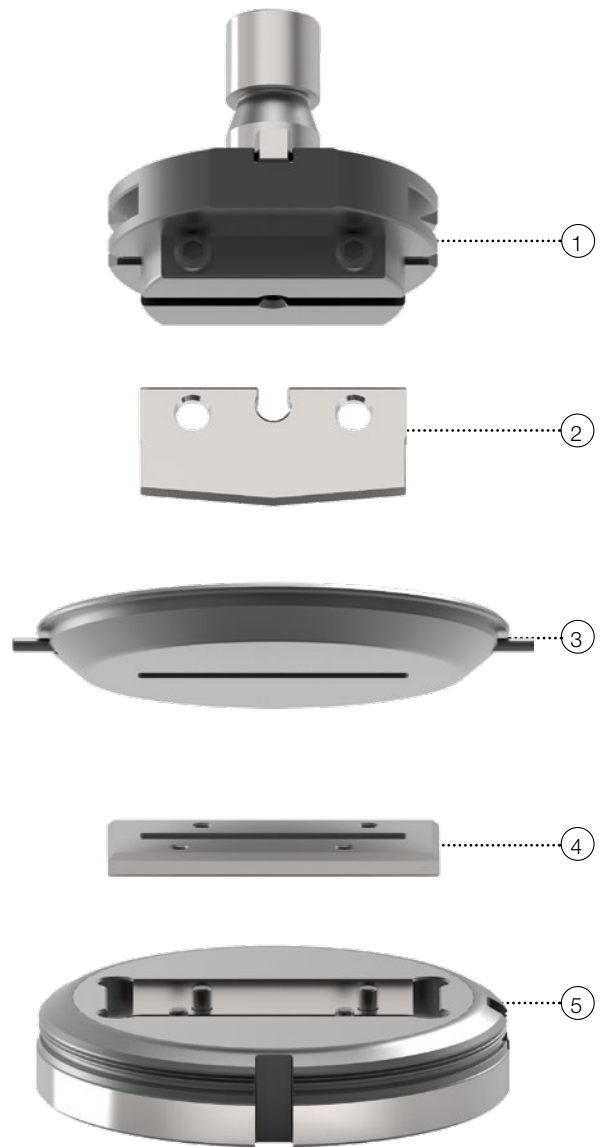
Cross references: see page

UPPER PART OPTIONS		UPPER PART	
Max. sheet thickness up to 3,00 mm		Additional costs for coating (slitting punch blade insert)	66
⁽¹⁾ Additional costs for reduced dimensional deviation	26,10	Polished cutting part (punch size 2)	67
⁽¹⁾ Standard version with rooftop	without extra charge		
Set of screws M 8 x 16 (2 pc per set)			
Part-no. 1S0393Z	5,10		
STRIPPER OPTIONS		STRIPPER	
PU coating for low-scratch material handling	140,13	Spare parts	64
		Push-out stripper	65
LOWER PART OPTIONS		LOWER PART	
Compensating rings:	15,28	RTC cartridge and die carrier	52
1 Set (2xt = 0,1 mm / 2xt = 0,3 mm / 2xt = 0,5 mm) - part-no. 1S3794		Keyway clamps	64
⁽²⁾ Suitable for rectangle, as well as rectangle 4 x R = 0,5		Slug-snap version for slug problems (die size 2)	69
⁽³⁾ Brush version for low-scratch material handling	62,14		

SLITTING TOOL SIZE 2 / 5 X 56 - STANDARD

INTEGRATED ADJUSTING RING, SLITTING PUNCH BLADE, DIE PLATE

DESCRIPTION	POSITION	PART-NO.	PRICE IN €
COMPLETE TOOL ⁽¹⁾			
Oblong	1 - 5	1S0431110	749,10
Rectangle	1 - 5	1S0431120	749,10
Rectangle with 4 x R = 0,5	1 - 5	1S0431130	749,10
Trapezoid SF17	1 - 5	1S0431140	772,01
Double Trapezoid SF16	1 - 5	1S0431150	826,84
SLITTING PUNCH BLADE HOLDER (WITHOUT PUNCH BLADE INSERT)			
With integrated adjusting ring	1	1S0393	356,71
SLITTING PUNCH BLADE INSERT (H-PM[®]) ⁽¹⁾			
Oblong	2	1S04311	44,61
Rectangle	2	1S04312	44,61
Rectangle with 4 x R = 0,5	2	1S04313	44,61
Trapezoid SF17	2	1S04314	54,81
Double Trapezoid SF16	2	1S04315	100,68
STRIPPER			
Oblong	3	119254	61,15
Rectangle	3	119253	61,15
Rectangle with 4 x R = 0,5	3	119253	61,15
Trapezoid SF17	3	119257	67,55
Double Trapezoid SF16	3	119256	68,80
DIE PLATE (H-PM[®])			
Oblong	4	1S17261	58,60
Rectangle ⁽²⁾	4	1S17262	58,60
Trapezoid SF17	4	1S17264	65,02
Double Trapezoid SF16	4	1S17265	72,65
DIE PLATE ADAPTER (WITHOUT DIE PLATE) ⁽³⁾			
Incl. screws	5	1S1756	228,07

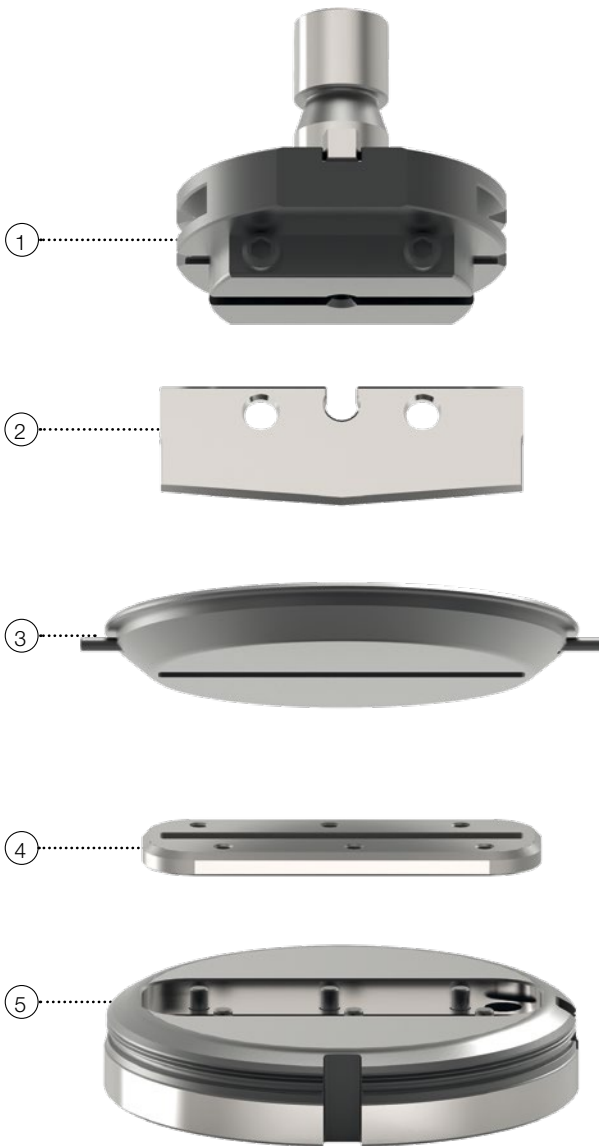


Cross references: see page

UPPER PART OPTIONS	UPPER PART	see page
Max. sheet thickness up to 3,00 mm	Slitting close to embossing	33 - 34
⁽¹⁾ Additional costs for reduced dimensional deviation	Additional costs for coating (slitting punch blade insert)	66
⁽¹⁾ Standard version with rooftop	Polished cutting part (punch size 2)	67
Set of screws M 8 x 16 (2 pc per set)		5,10
Part-no. 1S0393Z		
STRIPPER OPTIONS	STRIPPER	
PU coating for low-scratch material handling	Spare parts	64
	Push-out stripper	65
LOWER PART OPTIONS	LOWER PART	
Compensating rings:	RTC cartridge and die carrier	52
1 Set (2xt = 0,1 mm / 2xt = 0,3 mm / 2xt = 0,5 mm) - part-no. 1S3794	Keyway clamps	64
⁽²⁾ Suitable for rectangle, as well as rectangle 4 x R = 0,5	Slug-snap version for slug problems (die size 2)	69
⁽³⁾ Brush version for low-scratch material handling		62,14

SLITTING TOOL SIZE 2 / 5 X 76,2 - STANDARD

INTEGRATED ADJUSTING RING, SLITTING PUNCH BLADE, DIE PLATE



DESCRIPTION	POSITION	PART-NO.	PRICE IN €
COMPLETE TOOL ⁽¹⁾			
Oblong	1 - 5	1S0432110	775,87
Rectangle	1 - 5	1S0432120	775,87
Rectangle with 4 x R = 0,5	1 - 5	1S0432130	775,87
Trapezoid SF17	1 - 5	1S0432140	806,45
Double Trapezoid SF16	1 - 5	1S0432150	865,05
SLITTING PUNCH BLADE HOLDER (WITHOUT PUNCH BLADE INSERT)			
With integrated adjusting ring	1	1S0393	356,71
SLITTING PUNCH BLADE INSERT (H-PM[®]) ⁽¹⁾			
Oblong	2	1S04321	45,86
Rectangle	2	1S04322	45,86
Rectangle with 4 x R = 0,5	2	1S04323	45,86
Trapezoid SF17	2	1S04324	56,06
Double Trapezoid SF16	2	1S04325	108,31
STRIPPER			
Oblong	3	119274	61,15
Rectangle	3	119273	61,15
Rectangle with 4 x R = 0,5	3	119273	61,15
Trapezoid SF17	3	119277	67,55
Double Trapezoid SF16	3	119276	68,80
DIE PLATE (H-PM[®])			
Oblong	4	1S17411	84,08
Rectangle ⁽²⁾	4	1S17412	84,08
Trapezoid SF17	4	1S17414	98,13
Double Trapezoid SF16	4	1S17415	103,22
DIE PLATE ADAPTER (WITHOUT DIE PLATE) ⁽³⁾			
Incl. screws	5	1S1776	228,07

UPPER PART OPTIONS	Cross references:	UPPER PART	see page
Max. sheet thickness up to 2,50 mm		Slitting close to embossing	35
⁽¹⁾ Additional costs for reduced dimensional deviation	26,10	Additional costs for coating (slitting punch blade insert)	66
⁽¹⁾ Standard version with rooftop	without extra charge	Polished cutting part (punch size 2)	67
Set of screws M 8 x 16 (2 pc per set)	5,10		
Part-no. 1S0393Z			

STRIPPER OPTIONS	STRIPPER
PU coating for low-scratch material handling	140,13
	Spare parts
	Push-out stripper
	64
	65

LOWER PART OPTIONS	LOWER PART
Compensating rings:	15,28
1 Set (2xt = 0,1 mm / 2xt = 0,3 mm / 2xt = 0,5 mm) - part-no. 1S3797	RTC cartridge and die carrier
⁽²⁾ Suitable for rectangle, as well as rectangle 4 x R = 0,5	Keyway clamps
⁽³⁾ Brush version for low-scratch material handling	62,14
	Slug-snap version for slug problems (die size 2)
	69

SLITTING TOOL SIZE 2 / 5 X 56 - SPRING LOADED

INTEGRATED ADJUSTING RING, SLITTING PUNCH BLADE AND DIE PLATE FOR SLITTING CLOSE TO EMBOSSED UP TO H = 4,50 MM, WITH SPRING-LOADED METAL STRIPPER

DESCRIPTION	POSITION	PART.NC.	PRICE IN €
COMPLETE TOOL ^(*)			
Oblong	1 - 7	1S037110	747,84
Rectangle	1 - 7	1S037120	747,84
Rectangle with 4 x R = 0,5	1 - 7	1S037130	747,84
Trapezoid SF17	1 - 7	1S037140	764,37
Double Trapezoid SF16	1 - 7	1S037150	817,88

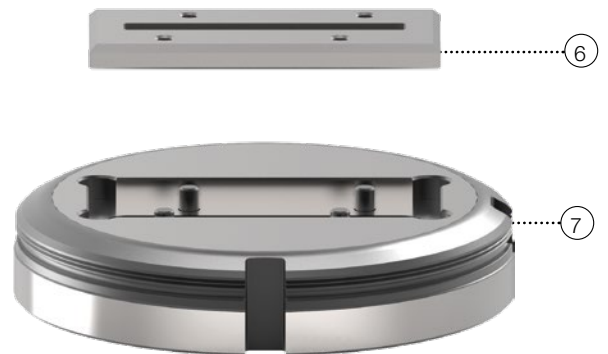
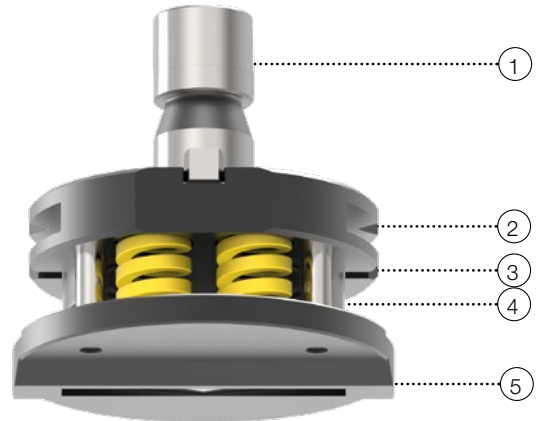
COMPLETE UPPER PART ^(*)			
Oblong	1 - 5	1S03711	461,17
Rectangle	1 - 5	1S03712	461,17
Rectangle with 4 x R = 0,5	1 - 5	1S03713	461,17
Trapezoid SF17	1 - 5	1S03714	471,37
Double Trapezoid SF16	1 - 5	1S03715	517,22

SPARE PARTS FOR UPPER PART			
Slitting punch blade holder	1	1S0371	263,75
Spare springs and screws	3 + 4	1S0379	63,71
Active stripper	5	1S03752C	89,19

SLITTING PUNCH BLADE INSERT (H-PM[®]) ^(*)			
Oblong	2	1S04311	44,61
Rectangle	2	1S04312	44,61
Rectangle with 4 x R = 0,5	2	1S04313	44,61
Trapezoid SF17	2	1S04314	54,81
Double Trapezoid SF16	2	1S04315	100,68

DIE PLATE (H-PM[®])			
Oblong	6	1S17261	58,60
Rectangle ^(*)	6	1S17262	58,60
Trapezoid SF17	6	1S17264	65,02
Double Trapezoid SF16	6	1S17265	72,65

DIE PLATE ADAPTER (WITHOUT DIE PLATE) ^(*)			
Incl. screws	7	1S1756	228,07



Cross references: see page

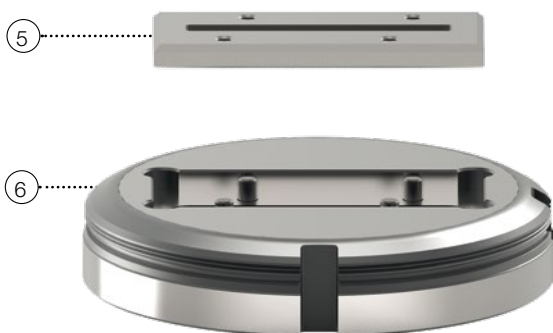
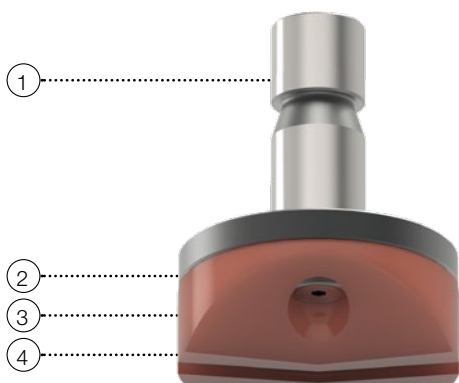
UPPER PART OPTIONS	UPPER PART	see page
Max. sheet thickness up to 1,50 mm	Additional costs for coating (slitting punch blade insert)	66
^(*) Additional costs for reduced dimensional deviation	Polished cutting part (punch size 2)	67
^(*) Standard version with rooftop	without extra charge	
Set of screws M 8 x 16 (2 pc per set)		5,10
Part-no. 1S0393Z		

STRIPPER OPTIONS	STRIPPER
Polished version for low-scratch material handling	21,12

LOWER PART OPTIONS	LOWER PART	
Compensating rings:	RTC cartridge and die carrier	52
1 Set (2xt = 0,1 mm / 2xt = 0,3 mm / 2xt = 0,5 mm) - part-no. 1S3794	Keyway clamps	64
^(*) Suitable for rectangle, as well as rectangle 4 x R = 0,5	Slug-snap version for slug problems (die size 2)	69
^(*) Brush version for low-scratch material handling		62,14

SLITTING TOOL SIZE 2 / 5 X 56 - PU

FOR SLITTING CLOSE TO EMBOSSING, WITH PU STRIPPER



DESCRIPTION	POSITION	PART-NO.	PRICE IN €
COMPLETE TOOL ⁽¹⁾			
Oblong	1 - 6	1S295010	565,64
Rectangle	1 - 6	1S295020	565,64
Rectangle with 4 x R = 0,5	1 - 6	1S295030	565,64
Trapezoid SF17	1 - 6	1S295040	589,89
Double Trapezoid SF16	1 - 6	1S295050	665,00
COMPLETE UPPER PART (INCL. SPRINGS, SCREWS, SOCKETS) ⁽¹⁾			
Oblong	1 - 4	1S29501	279,03
Rectangle	1 - 4	1S29502	279,03
Rectangle with 4 x R = 0,5	1 - 4	1S29503	279,03
Trapezoid SF17	1 - 4	1S29504	296,87
Double Trapezoid SF16	1 - 4	1S29505	364,36
PUNCH (WITHOUT SPRINGS, SCREWS, SOCKETS) (H-PM®) ⁽¹⁾			
Oblong	1	1S29511	215,34
Rectangle	1	1S29512	215,34
Rectangle with 4 x R = 0,5	1	1S29513	215,34
Trapezoid SF17	1	1S29514	233,16
Double Trapezoid SF16	1	1S29515	300,66
DIE PLATE (H-PM®)			
Oblong	5	1S17261	58,60
Rectangle ⁽²⁾	5	1S17262	58,60
Trapezoid SF17	5	1S17264	65,02
Double Trapezoid SF16	5	1S17265	72,65
DIE PLATE ADAPTER (WITHOUT DIE PLATE) ⁽³⁾			
Incl. screws	6	1S1756	228,07

Cross references: see page

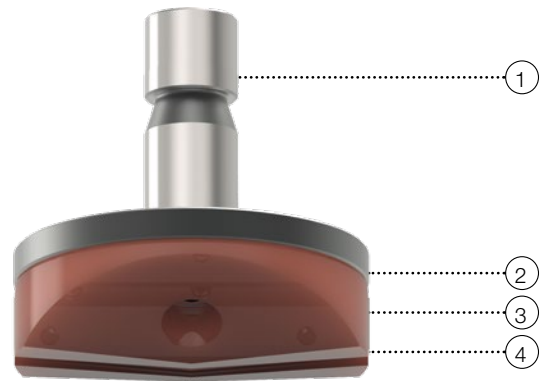
UPPER PART OPTIONS		UPPER PART	
Max. sheet thickness up to 3,00 mm		Adjusting rings	46
⁽¹⁾ Additional costs for reduced dimensional deviation	26,10	ps:®passfit - explanation and additional costs	51
⁽¹⁾ Standard version with rooftop	without extra charge	Additional costs for coating (punch size 2)	66
X3-PM quality	on request	Polished cutting part (punch size 2)	67

STRIPPER OPTIONS		STRIPPER	
Set of spare PU springs - part-no. 1S2956 - pos. 4	42,08		
Set of spare sockets - part-no. 1S2954 - pos. 3	16,59		
Set of spare screws - part-no. 1S2950 - pos. 2	5,10		
LOWER PART OPTIONS		LOWER PART	
Compensating rings:	15,28	RTC cartridge and die carrier	52
1 Set (2xt = 0,1 mm / 2xt = 0,3 mm / 2xt = 0,5 mm) - part-no. 1S3794		Keyway clamps	64
⁽²⁾ Suitable for rectangle, as well as rectangle 4 x R = 0,5		Slug-snap version for slug problems (die size 2)	69
⁽³⁾ Brush version for low-scratch material handling	62,14		

SLITTING TOOL SIZE 2 / 5 X 76,2 - PU

FOR SLITTING CLOSE TO EMBOSSEING, WITH PU STRIPPER

DESCRIPTION	POSITION	PART-NO.	PRICE IN €
COMPLETE TOOL ⁽¹⁾			
Oblong	1 - 6	1S297010	617,89
Rectangle	1 - 6	1S297020	617,89
Rectangle with 4 x R = 0,5	1 - 6	1S297030	617,89
Trapezoid SF17	1 - 6	1S297040	656,13
Double Trapezoid SF16	1 - 6	1S297050	723,62
COMPLETE UPPER PART (INCL. SPRINGS, SCREWS, SOCKETS) ⁽¹⁾			
Oblong	1 - 4	1S29701	305,76
Rectangle	1 - 4	1S29702	305,76
Rectangle with 4 x R = 0,5	1 - 4	1S29703	305,76
Trapezoid SF17	1 - 4	1S29704	329,99
Double Trapezoid SF16	1 - 4	1S29705	392,37
PUNCH (WITHOUT SPRINGS, SCREWS, SOCKETS) (H-PM®) ⁽¹⁾			
Oblong	1	1S29711	228,07
Rectangle	1	1S29712	228,07
Rectangle with 4 x R = 0,5	1	1S29713	228,07
Trapezoid SF17	1	1S29714	252,24
Double Trapezoid SF16	1	1S29715	314,71
DIE PLATE (H-PM®)			
Oblong	5	1S17411	84,08
Rectangle ⁽²⁾	5	1S17412	84,08
Trapezoid SF17	5	1S17414	98,13
Double Trapezoid SF16	5	1S17415	103,22
DIE PLATE ADAPTER (WITHOUT DIE PLATE) ⁽³⁾			
Incl. screws	6	1S1776	228,07



Cross references: see page

UPPER PART OPTIONS	UPPER PART	
Max. sheet thickness up to 2,50 mm	Adjusting rings	46
⁽¹⁾ Additional costs for reduced dimensional deviation	ps:®passfit - explanation and additional costs	51
⁽¹⁾ Standard version with rooftop	Additional costs for coating (punch size 2)	66
X3-PM quality	Polished cutting part (punch size 2)	67

STRIPPER OPTIONS	STRIPPER	
Set of spare PU springs - part-no. 1S2955 - pos. 4		56,06
Set of spare sockets - part-no. 1S2954 - pos. 3		16,59
Set of spare screws - part-no. 1S2950 - pos. 2		5,10
LOWER PART OPTIONS	LOWER PART	
Compensating rings:	RTC cartridge and die carrier	52
1 Set (2xt = 0,1 mm / 2xt = 0,3 mm / 2xt = 0,5 mm) - part-no. 1S3797	Keyway clamps	64
⁽²⁾ Suitable for rectangle, as well as rectangle 4 x R = 0,5	Slug-snap version for slug problems (die size 2)	69
⁽³⁾ Brush version for low-scratch material handling		62,14



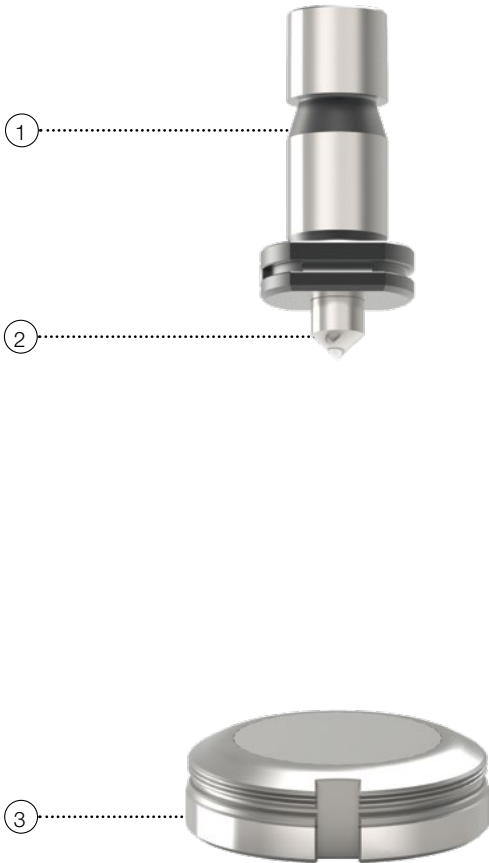
SPECIAL TOOLS

PASS EXTRA TOOLS FOR YOUR
TRUMPF SYSTEM

INDEX

Centre Punch Tool from Above	page 38
Centre Punch Tool from Below	page 39
ps:®signing	page 40
ps:®engraving	page 41
ps:®single-thread	page 42

CENTRE PUNCH TOOL FROM ABOVE



DESCRIPTION	SHEET THICKNESS	POSITION	PART-NO.	PRICE IN €
CENTRE PUNCH TOOL „SOLID“ - PUNCH CHUCK, CENTRE PUNCH, DIE ⁽¹⁾				
Complete tool	1,00 - 4,50*	1 - 3	1S092A	100,07
Complete tool	4,51 - 8,00	1 - 3	1S092B	100,07
SPARE CENTRE PUNCH				
Length 55,3 mm	1,00 - 4,50*	2	1S0921	21,69
Length 51,3 mm	4,51 - 8,00	2	1S0922	21,69
SPARE DIE				
Flat	1,00 - 8,00	3	1S3940	20,38

* for machine group I up to 8,00 mm

Details:

ACCESSORIES

⁽¹⁾ Suitable adjusting ring - part-no. 118101 -> see page 46

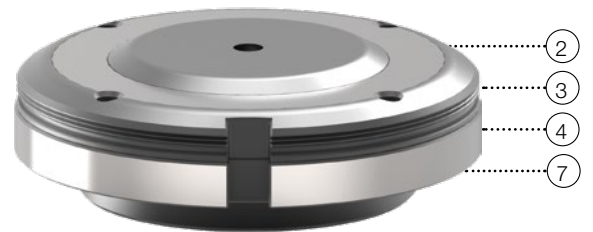
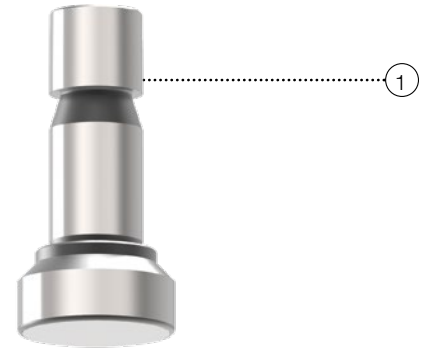
⁽¹⁾ Screw with shoulder M14 x 1,5 x 12 - part-no. 1S0925 2,44

CENTRE PUNCH TOOL FROM BELOW

DESCRIPTION	SHEET THICKNESS	POSITION	PART-NO.	PRICE IN €
CENTRE PUNCH TOOL WITH STEPLESS ADJUSTABLE CENTRE MARK TEMPLATE DEPTH ^(*)				
Complete tool	1,00 - 4,00*	1 - 7	1S2800	452,29

SPARE PARTS FOR CENTRE PUNCH TOOL WITH STEPLESS ADJUSTABLE DEPTH				
Upper Part	1,00 - 4,00	1	1S2801	56,06
Stripper	1,00 - 4,00	2	1S2804	49,71
Centre punch	1,00 - 4,00	3	1S2805	42,08
Cushioning element	1,00 - 4,00	4	1S2806	21,69
Adjusting screw	1,00 - 4,00	7	1S2809	8,95

* for machine group I up to 8,00 mm



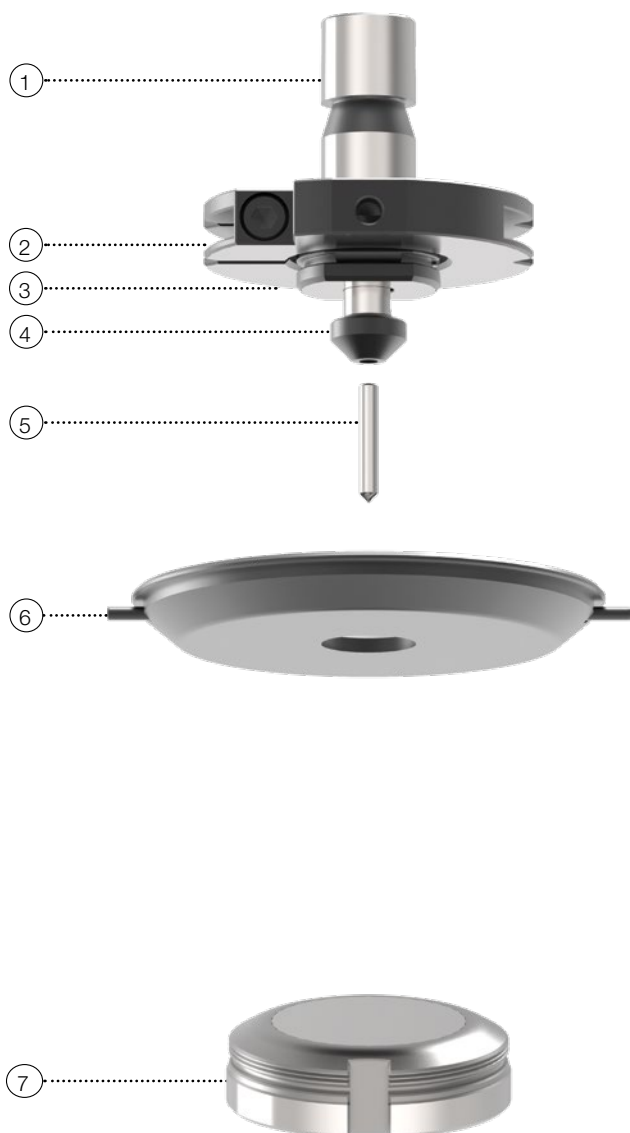
Details:

ACCESSORIES

^(*) Suitable adjusting ring - part-no. 118201 -> see page 46

ps:® signing

FOR SHEET THICKNESSES FROM 0,80 MM UP TO 8,00 MM



DESCRIPTION	POSITION	PART-NO.	PRICE IN €
COMPLETE SIGNING TOOL			
Consisting of: complete upper part, incl. adjusting ring, stripper Ø 20 and flat die	1 - 7	1S390W	302,70
COMPLETE SIGNING UPPER PART			
Consisting of: adapter, adjusting ring, signing pin and spring	1 - 5	1S3900	255,54
SPARE SIGNING PIN			
Made of H-PM® steel	5	1S3930	17,84
SPARE STRIPPER			
Ø 20	6	112211-20	26,78
SPARE DIE			
Flat	7	1S3940	20,38

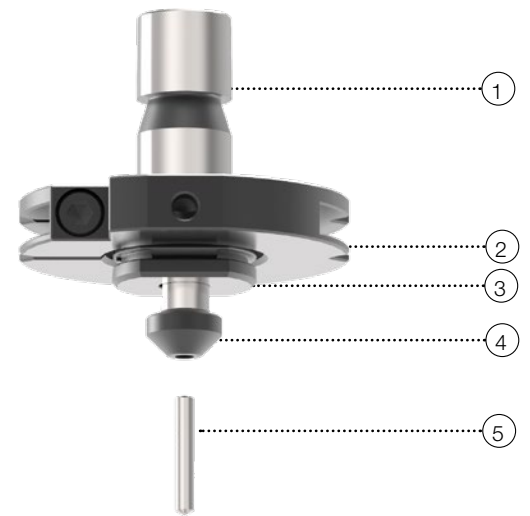
Details: see page

ACCESSORIES

Spare adjusting ring - part-no. 118101 46

Option „signing“ must be unlocked in the machine controlling

DESCRIPTION	POSITION	PART-NO.	PRICE IN €
ENGRAVING TOOL INCL. DIE AND BALL CASTER			
Consisting of: complete upper part, incl. 3 types of springs, adjusting ring, die and ball caster	1 - 8	199103950	1116,37
ENGRAVING TOOL UPPER PART			
Incl. 3 types of springs	1 - 5	199103950-1	371,06
SPARE ENGRAVING NEEDLE			
Diamond	5	199103962	118,07
SPARE DIE			
Incl. Ampco plate and ball caster	6 - 8	199103950-2	745,30
SPARE SPRINGS			
„Green“ for aluminium		91701025A	10,20
„Blue“ for steel		91701025B	10,20
„Red“ for stainless steel		91701025C	10,20



Details: see page

ACCESSORIES

Spare adjusting ring - part-no. 118101 46

Option „engraving“ must be unlocked in the machine controlling

ps:® single-thread

FOR MACHINE GROUP I

(TRUPUNCH1000, 2000, 2020, 3000, 5000 TRUMATIC1000, 3000, 6000, 7000)



DESCRIPTION	SIZE	POSITION	PART-NO.	PRICE IN €
BASIC HOLDER (WITHOUT TAP MODULE AND TAP INSERT)				
Type 1	M2,5 - M5	1	924GF1101	2317,87
Type 2	M6 - M10	1	924GF2101	2317,87
TAP MODULE (WITHOUT TAP INSERTS)				
	M2,5	2	924GF1301	252,76
	M3	2	924GF1302	252,76
	M4	2	924GF1304	252,76
	M5	2	924GF1305	252,76
	M6	2	924GF2301	252,76
	M8	2	924GF2302	252,76
	M10	2	924GF2303	252,76
TAP INSERT (METRIC THREADS)				
for basic holder type 1	M2,5	3	924GF1401	37,23
for basic holder type 1	M3	3	924GF1402	37,23
for basic holder type 1	M4	3	924GF1404	37,23
for basic holder type 1	M5	3	924GF1405	37,23
for basic holder type 2	M6	3	924GF2401	37,23
for basic holder type 2	M8	3	924GF2402	37,23
for basic holder type 2	M10	3	924GF2403	45,64
DIE				
Type A ⁽¹⁾	M2,5 - M10	4	924GF2201	432,78
Type B ⁽²⁾	M2,5 - M8	4	924GF2211	492,29

⁽¹⁾ for flat sheets and extrusions upwards

⁽²⁾ for extrusions up- and downwards

Details:

INFORMATION

One complete tool always includes:
„Basic holder; tap module; tap insert and die“

Suitable for max. sheet thickness $s = 1,00$ mm up to $8,00$ mm
Other thread sizes and versions (e.g. thread measured in inches) on request

Please note that tapping tools are exclusively used in machines with programming option „Thread Forming“

Cross references:

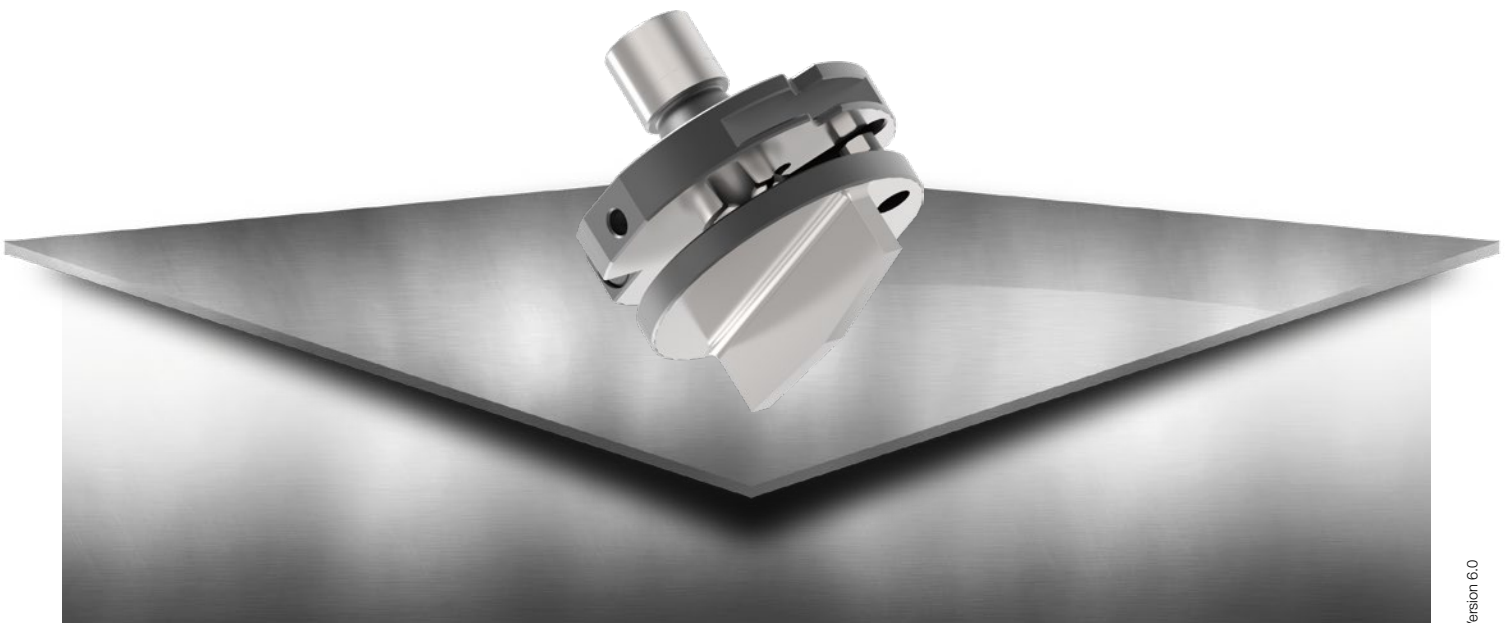
ACCESSORIES

RTC cartridge and die carrier

see page

52

A large grid of graph paper for taking notes, consisting of 20 columns and 40 rows of small squares.



IT DEPENDS ON: ACCESSORIES

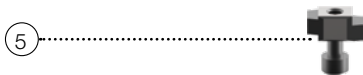
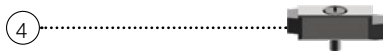
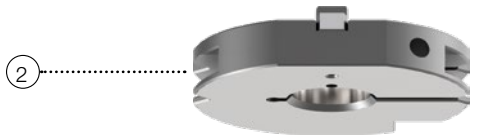
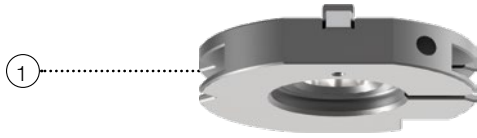
PASS ACCESSORIES FOR YOUR
TRUMPF SYSTEM

INDEX

Adjusting rings	page 46
Punch Chucks, Adapter Rings	page 47
Adjustment Unit for Punch	page 48
Shims for Dies	page 49
Soft pads	page 50
ps:®passfit	page 51
ps:®3D-RTC - cartridge plastic size 2	page 52
ps:®3D-RTC - cartridge plastic size 5	page 53

ADJUSTING RINGS

(FOR MACHINE GROUPS E / F / H / I)



SIZE	POSITION	PART-NO.	PRICE IN €
AUTOMATIC ADJUSTING RINGS INCL. KEY			
Size 1 with cut-out	1	118101	87,54
Size 2 without cut-out	2	118201	75,00

ADJUSTING RING INCL. KEY FOR REINFORCED VERSION PUNCHES FORM			
Reinforced	3	118V01	94,27

SPARE PARTS			
Key with screws for automatic adjusting rings	4	118902	20,88
Key with screws for reinforced adjusting rings	5	118903	21,69

Cross references: see page

PUNCH

Punch size 1 and 2 6 - 13

ACCESSORIES

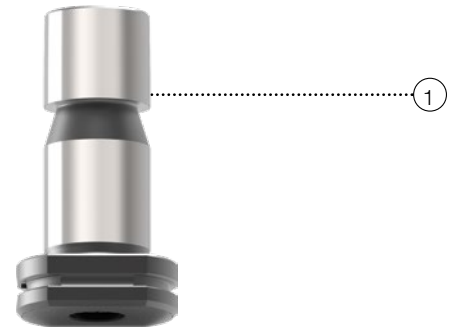
ps:®passfit - explanation and additional costs 51

Spare parts 64

PUNCH CHUCKS, ADAPTER RINGS

(FOR MACHINE GROUPS E / F / H / I)

SIZE	POSITION	PART-NO.	PRICE IN €
PUNCH CHUCK			
0 (up to 6,00 mm)	1	119A01	57,99
0 (up to 10,50 mm)	1	119B01	57,99
ADAPTER RING FOR DIE			
2 / 1	2	120210	109,10
ADAPTER RING WITH BRUSHES			
2 / 1	3	1S1820	161,70



Spare parts:

SPARE PARTS FOR ADAPTER RING WITH BRUSHES	
Spare brush for adapter ring - part-no. 1S1822 - pos. 4	28,03
Set of shims (6xt = 0,5 mm) - part-no. 1S1823 - pos. 5	19,14

Cross references:

	see page
PUNCH	
Punch size 0	6 - 13
DIE	
Die size 1	6 - 15
ACCESSORIES	
Spare parts	64

ADJUSTMENT UNIT FOR PUNCH

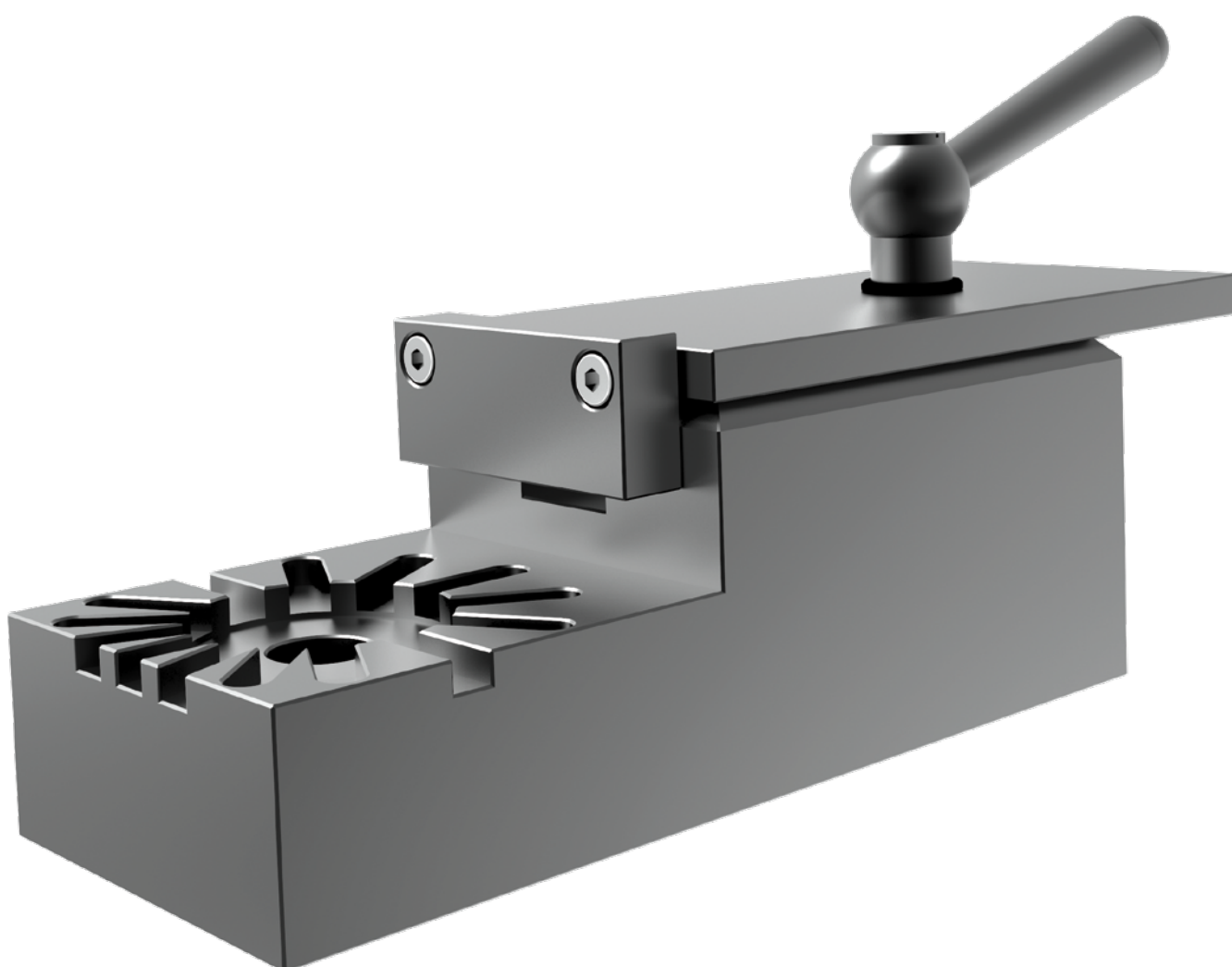
PART-NO.

PRICE IN €

POSSIBLE ANGLES: 0° - 22,5° - 30° - 45° - 60° - 67,5° - 90°

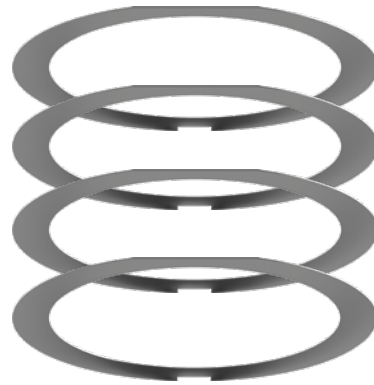
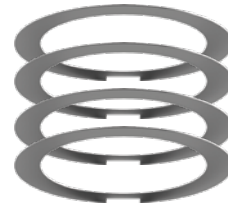
Z497673

1013,62



SHIMS FOR DIES

SIZE	RANGE	PART-NO.	PRICE IN €
SET OF SHIMS FOR DIE SIZE 1			
1	4 x t = 0,1 mm	11AS01	7,71
1	4 x t = 0,3 mm	11AS03	7,71
1	4 x t = 0,5 mm	11AS05	7,71
1	2 x t = 0,1 / 1 x t = 0,3 / 1 x t = 0,5 mm	11AS0_	7,71
SET OF SHIMS FOR DIE SIZE 2			
2	4 x t = 0,1 mm	12AS01	7,71
2	4 x t = 0,3 mm	12AS03	7,71
2	4 x t = 0,5 mm	12AS05	7,71
2	2 x t = 0,1 / 1 x t = 0,3 / 1 x t = 0,5 mm	12AS0_	7,71



Details: see page

ACCESSORIES

Adapter rings for die	47
RTC cartridge and die carrier	52

SOFT PADS



SIZE	RANGE	POSITION	PART-NO.	PRICE IN €
SOFT PADS FOR STRIPPER				
2	Inside-Ø 16	1	PAD2A16	4,48
2	Inside-Ø 25	1	PAD2A25	4,48
2	Inside-Ø 50	1	PAD2A50	4,48
2	Inside-Ø 76	1	PAD2A76	4,48
SOFT PADS FOR DIE				
2	General	2	PAD2MAN	3,86
2	Square	3	PAD2MQN	3,86
2	Rectangle / oblong	4	PAD2MFN	3,24
SOFT PADS FOR ADAPTER RING				
2 to 1		5	PAD2ZAN	3,86

FOR FAST AND EASY ADJUSTMENT WITHOUT THE NEED FOR A FIXTURE

DESCRIPTION	MACHINE GROUP	PART-NO.	PRICE IN €
ps:®passfit ADJUSTING RING INCL. KEY FOR PUNCH SIZE 1			
Size 1	E-I	1181P1	110,87

ps:®passfit ADJUSTING RING INCL. KEY FOR PUNCH SIZE 2			
Size 2	E-I	1182P1	110,87

ps:®passfit ADJUSTING RING INCL. KEY FOR PUNCH REINFORCED VERSION			
Reinforced	E-I	118VP1	110,87

DESCRIPTION	LOCATION	PART-NO.	EXTRA CHARGE IN €
-------------	----------	----------	-------------------

ps:®passfit FOR PUNCH SIZE 1			
First keyway	0°	__P1	25,49
Each additional keyway			12,74

ps:®passfit FOR PUNCH SIZE 2 AND SIZE 3			
First alignment hole & pin	0 - 90°	__P2	25,49
Each additional alignment hole			12,74

ps:®passfit PUNCH REINFORCED FORM			
First keyway	0°	__P1	25,49
Each additional keyway			12,74



Details:

INFORMATION ABOUT ps:®passfit

- Form-fitting anti-rotation-lock
- High operational security of the machine
- Solid tool, as the approved standard punches serve as basic tool
- Profile debilitation develops at the tension shaft
- High precision mating with punch; does not add to tool length
- Keyway positions on customer request
- Also reasonable for special tools
- All PASS cluster tools are generally equipped with ps:®passfit

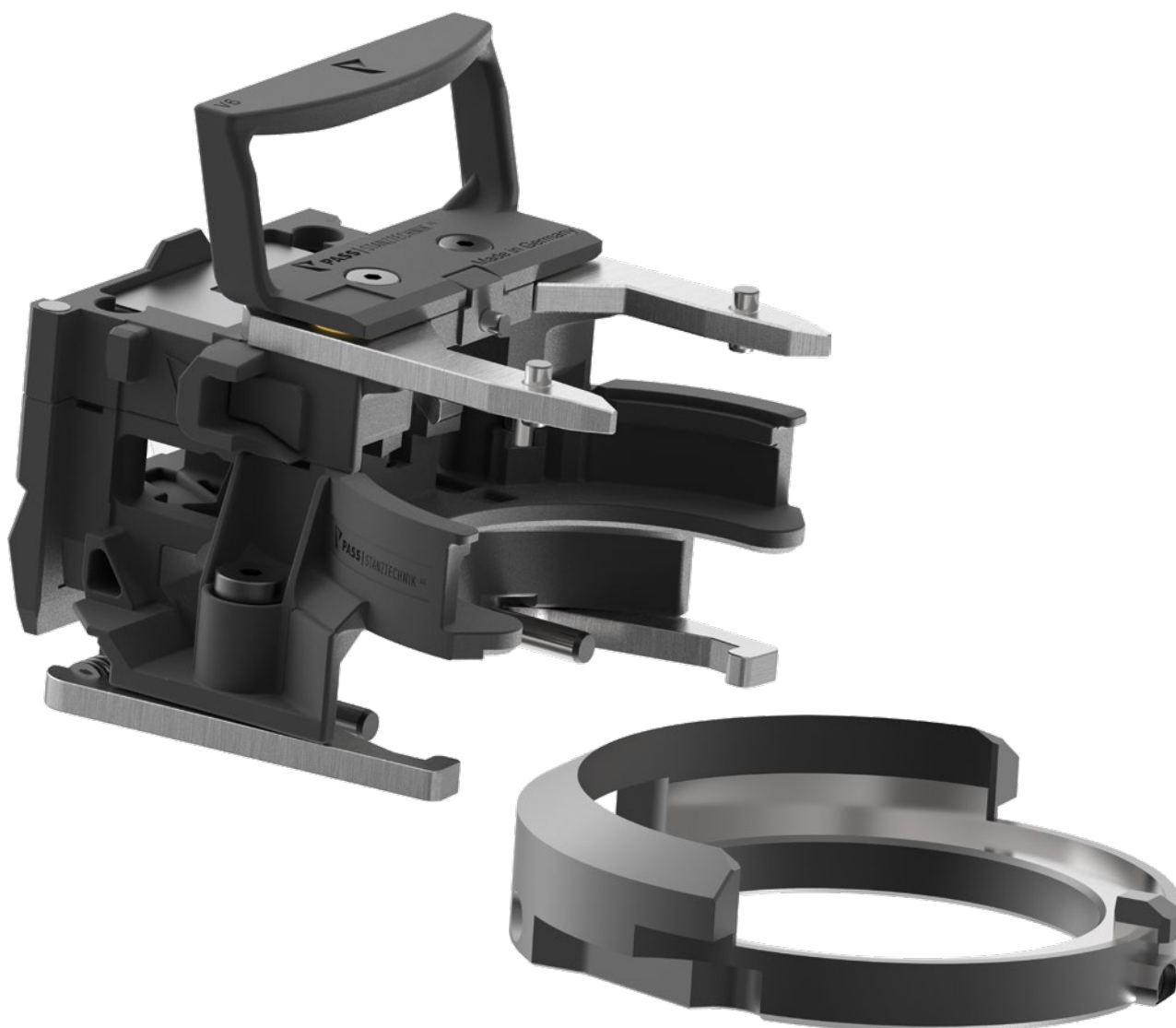
SPARE PARTS

- | | |
|--|-------|
| Adjusting key for ps:®passfit - adjusting ring size 1 and 2 - part-no. 118902 | 20,88 |
| Adjusting key for ps:®passfit - adjusting ring reinforced form - part-no. 118903 | 21,69 |

ps:[®]3D-RTC - CARTRIDGE PLASTIC SIZE 2

TOOLING CARTRIDGE FOR MACHINE TYPE TRUMPF

DESCRIPTION	POSITION	PART-NO.	PRICE IN €
ps: [®] 3D-RTC CARTRIDGE PLASTIC SIZE 2			
Cartridge without die carrier		15201R1	517,00
Die carrier		960100020	117,78

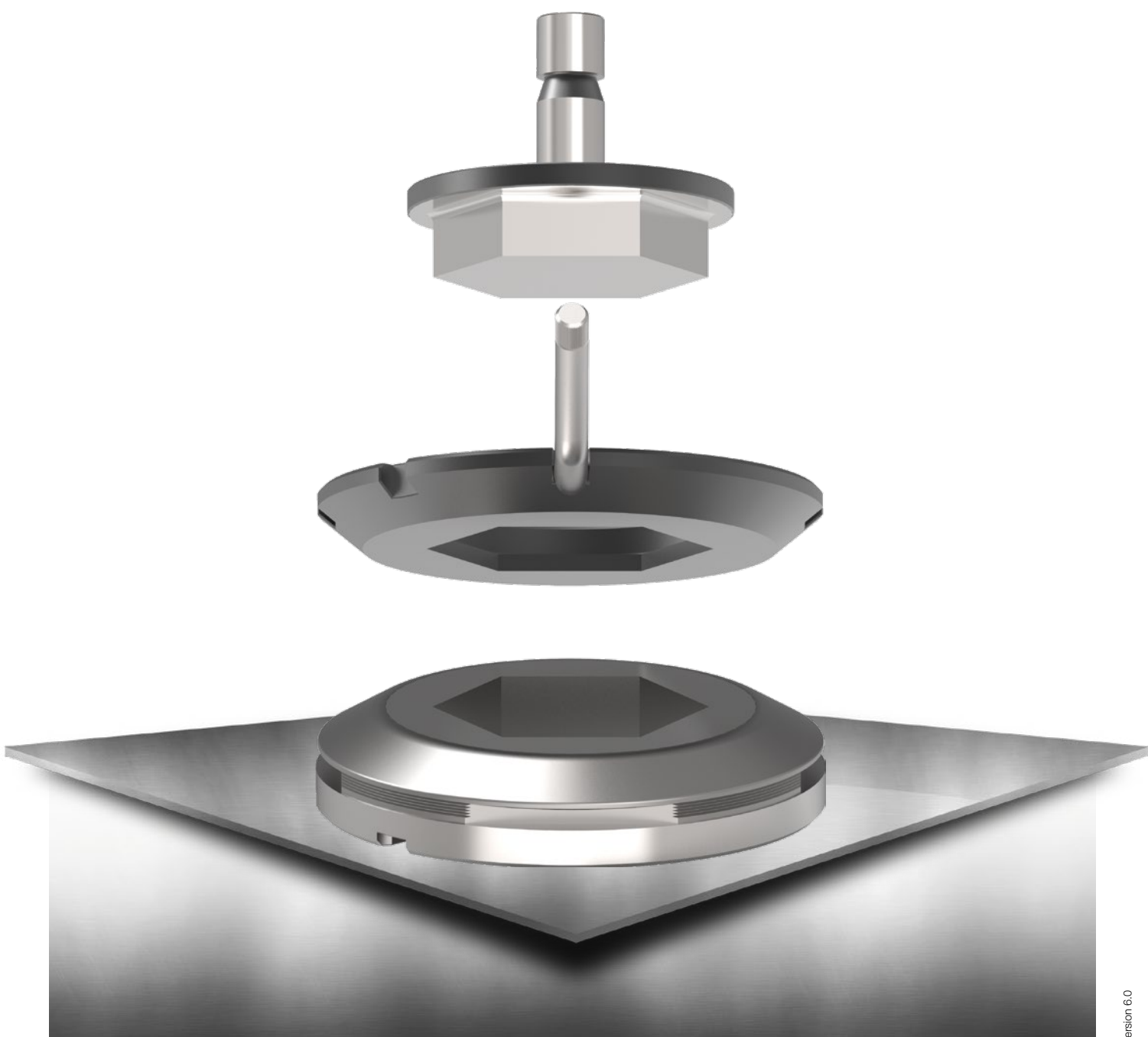


ps:®3D-RTC - CARTRIDGE PLASTIC SIZE 5

TOOLING CARTRIDGE FOR MACHINE TYPE TRUMPF

DESCRIPTION	POSITION	PART-NO.	PRICE IN €
ps:®3D-RTC CARTRIDGE PLASTIC SIZE 5			
Cartridge		155R311	897,50





YOU NEED IT BIG SIZE?

PASS TOOLS SIZE 3 AND SPECIFIC TOOLING FOR BOSCHERT PUNCHING MACHINES

INDEX

Punching Tools (Standard) size 3	page 56
Punching Tools (Form) size 3	page 57
Adapter and Manual Adjusting Rings	page 58
Slitting Tool size 2	page 59
Slitting Tool size 3	page 60
PU stripper	page 61

PUNCHING TOOLS (STANDARD) SIZE 3



DESCRIPTION	DIM. D	PART-NO.	PRICE IN €
ROUND			
Punch (H-PM®)	76,21 - 105,00 mm	101311C	224,21
Die	77,01 - 107,00 mm	106311C	180,91
Manual stripper	78,01 - 107,00 mm	111311C	85,38
SQUARE			
Punch (H-PM®)	53,91 - 74,25 mm	101312C	235,18
Die	54,91 - 75,50 mm	106312C	234,41
Manual stripper	56,01 - 77,00 mm	111312C	114,66
RECTANGLE			
Punch (H-PM®)	76,21 - 105,00 mm	101313C	246,81
Die	77,01 - 107,00 mm	106313C	238,27
Manual stripper	78,01 - 107,00 mm	111313C	115,96
OBLONG			
Punch (H-PM®)	76,21 - 105,00 mm	101314C	246,81
Die	77,01 - 107,00 mm	106314C	238,27
Manual stripper	78,01 - 107,00 mm	111314C	115,96

PUNCH OPTIONS		Cross references:	see page
Punches with shear (WT / DOWT / etc.) -> see page 68		PUNCH	
Cutting part under 1,00 mm	+ 40 %	ps:®passfit - explanation and additional costs	51
4 x corner radius	+ 10 %	Additional costs for coating	66
X3-PM quality	on request	Polished cutting part	67
		Adjusting rings	58
STRIPPER OPTIONS		STRIPPER	
Polished version for low-scratch material handling	27,33	Spare parts	64
		PU stripper	61
DIE OPTIONS		DIE	
Slug-stop version (negative cutting)	without extra charge	Slug-snap version (for slug problems) - price on request	69
Additional keyway	52,20	Adapter rings	58
Brush version for low-scratch material handling	62,14		
X8-PM quality	on request		

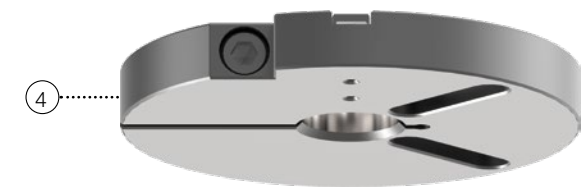
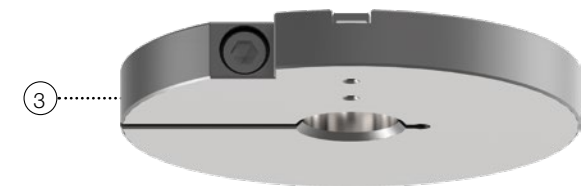
PUNCHING TOOLS (FORM) SIZE 3

DESCRIPTION	DIM. D	PART-NO.	PRICE IN €
SPECIAL SHAPE TOOLS GROUP 1 (SF01, SF02, SF04, SF05)			
Punch (H-PM®)	76,21 - 105,00 mm	12131_C1	276,63
Die	77,01 - 107,00 mm	12631_C1	253,54
Manual stripper	78,01 - 107,00 mm	1273D_C1	123,61
SPECIAL SHAPE TOOLS GROUP 2 (SF03, SF07, SF13, SF17)			
Punch (H-PM®)	76,21 - 105,00 mm	12131_C2	284,86
Die	77,01 - 107,00 mm	12631_C2	266,28
Manual stripper	78,01 - 107,00 mm	1273D_C2	124,85
SPECIAL SHAPE TOOLS GROUP 3 (SF06, SF08, SF14, SF16)			
Punch (H-PM®)	76,21 - 105,00 mm	12131_C3	582,98
Die	77,01 - 107,00 mm	12631_C3	347,84
Manual stripper	78,01 - 107,00 mm	1273D_C3	164,38
SPECIAL SHAPE TOOLS GROUP 4 (SF09, SF10, SF11, SF12, SF15)			
Punch (H-PM®)	76,21 - 105,00 mm	12131_C4	627,79
Die	77,01 - 107,00 mm	12631_C4	347,84
Manual stripper	78,01 - 107,00 mm	1273D_C4	164,38



PUNCH OPTIONS		Cross references:	see page
Punches with shear (WT / DOWT / etc.) -> see page 6866		PUNCH	
Cutting part under 1,00 mm	+ 40 %	Types of special shapes	10 - 13
X3-PM quality	on request	ps:®passfit - explanation and additional costs	51
		Additional costs for coating	66
		Polished cutting part	67
		Adjusting rings	46 + 58
STRIPPER OPTIONS		STRIPPER	
Polished version for low-scratch material handling	27,33	Spare parts	64
		PU stripper	61
DIE OPTIONS		DIE	
Slug-stop version (negative cutting)	without extra charge	Slug-snap version (for slug problems) - price on request	69
Additional keyway	52,20	Adapter rings	58
Brush version for low-scratch material handling	62,14		
X8-PM quality	on request		

ADAPTER AND MANUAL ADJUSTING RINGS



DESCRIPTION	MACHINE GROUP	POSITION	PART-NO.	PRICE IN €
ADAPTER RING FOR STRIPPER				
From 3 to 2	C - D	1	120326	114,63

ADAPTER RING FOR DIE				
From 3 to 1	C - D	2*	120310	131,25
From 3 to 2	C - D	2	120320	166,91

ADJUSTING RINGS (MANUAL)				
1	A - D	3*	118102	76,06
2	A - D	3*	118202	56,43
3 (outside Ø 95 mm)	A - D	3	118302	103,22

ps:®passfit ADJUSTING RINGS (MANUAL)				
1	A - D	4*	1181P2	93,03
2	A - D	4*	1182P2	85,38
3 (outside Ø 95 mm)	A - D	4	1183P2	132,49

* no picture

SLITTING TOOL SIZE 2 FOR BOSCHERT PUNCHING MACHINES

DESCRIPTION	POSITION	PART-NO.	PRICE IN €
SPRING LOADED SLITTING TOOL SIZE 2 - MEASURE 5 X 30 - 4 X R=0,5 ⁽¹⁾			
Upper part - complete	1 - 4	1S0330530	368,20
Spare slitting punch blade insert ⁽²⁾ (H-PM [®])	2	1S0440	67,55
Spare stripper 6 x 57	4	1S0333	81,53
Die cl 0,1 - cl 0,3	5	106T530__	68,80
Die cl 0,4 - cl 1,0	5	109T530__	71,34
SPRING LOADED SLITTING TOOL SIZE 2 - MEASURE 5 X 40 - 4 X R=0,5 ⁽¹⁾			
Upper part - complete	1 - 4	1S0330540	365,67
Spare slitting punch blade insert ⁽²⁾ (H-PM [®])	2	1S0441	63,71
Spare stripper 6 x 57	4	1S0333	81,53
Die cl 0,1 - cl 0,3	5	106T540__	113,42
Die cl 0,4 - cl 1,0	5	109T540__	175,80
SPRING LOADED SLITTING TOOL SIZE 2 - MEASURE 5 X 56 - 4 X R=0,5 ⁽¹⁾			
Upper part - complete	1 - 4	1S0330556	360,56
Spare slitting punch blade insert ⁽²⁾ (H-PM [®])	2	1S0442	58,60
Spare stripper 6 x 57	4	1S0333	81,53
Die cl 0,1 - cl 0,3	5	106T556__	113,42
Die cl 0,4 - cl 1,0	5	109T556__	183,45
OTHER SPARE PARTS			
Spare springs			
Set of steel springs (2 x big / 2 x small)	3	1S0331	20,38

Details / options:

⁽¹⁾ For slitting: Aluminium up to s = 4,00 mm,
steel up to s = 4,00 mm, stainless steel up to s = 2,5 mm

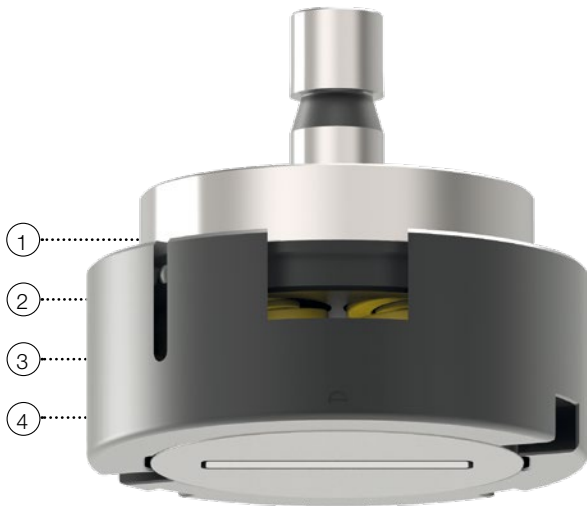
⁽²⁾ Slitting punch blade insert general with PASS T-MAX coating

⁽²⁾ Additional costs for reduced dimensional deviation 26,10



SLITTING TOOL SIZE 3

FOR BOSCHERT PUNCHING MACHINES



DESCRIPTION	POSITION	PART-NO.	PRICE IN €
SPRING LOADED SLITTING TOOL SIZE 3 - MEASURE 8 X 30 - 4 X R = 1,00 ⁽¹⁾			
Upper part - complete	1 - 4	1S0350830	778,42
Spare slitting punch blade insert ⁽²⁾ (H-PM [®])	2	1S0446	203,83
Spare stripper	4	1S0355830	75,20
Die cl 0,3 - cl 1,0	5	109T830__	71,34
Die cl 1,2 - cl 1,5	5	109T830__	175,80
SPRING LOADED SLITTING TOOL SIZE 3 - MEASURE 8 X 40 - 4 X R = 1,00 ⁽¹⁾			
Upper part - complete	1 - 4	1S0350840	775,87
Spare slitting punch blade insert ⁽²⁾ (H-PM [®])	2	1S0447	201,29
Spare stripper	4	1S0355840	75,20
Die cl 0,3	5	106T840__	113,42
Die cl 0,4 - cl 1,2	5	109T840__	175,80
SPRING LOADED SLITTING TOOL SIZE 3 - MEASURE 8 X 56 - 4 X R = 1,00 ⁽¹⁾			
Upper part - complete	1 - 4	1S0350856	769,47
Spare slitting punch blade insert ⁽²⁾ (H-PM [®])	2	1S0448	194,94
Spare stripper	4	1S0355856	75,20
Die cl 0,3	5	106T856__	113,42
Die cl 0,4 - cl 1,0	5	109T856__	183,45
OTHER SPARE PARTS			
Spare springs			
Set of steel springs (4 x big / 4 x small)	3	1S03558X1	53,50

Details / options:

⁽¹⁾ For slitting: Aluminium up to s = 6,00 mm, steel up to s = 6,00 mm, stainless steel up to s = 3,00 mm

⁽²⁾ Slitting punch blade insert general with PASS T-MAX coating

⁽²⁾ Additional costs for reduced dimensional deviation 26,10

PU STRIPPER

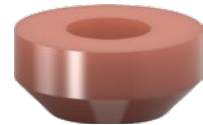
SPRING TYPE	PUNCH SHAPE ^(*)	RANGE	PART-NO.	PRICE IN €
WITHOUT SHAPE				
1	Flat size 1	- 12,00 mm	1S013810	12,74
1	Whisper size 1	- 12,00 mm	1S013820	15,28
2	Flat size 1	- 30,50 mm	1S013830	22,93
2	Whisper size 1	- 30,50 mm	1S013840	24,24
3	Flat size 2	- 48,00 mm	1S013850	29,33
3	Whisper size 2	- 48,00 mm	1S013860	30,59
	Flat / Whisper size 2	> 48,00 mm		on request

SPRING TYPE 1



FOR ROUND PUNCHES				
1	Flat size 1	- 12,00 mm	1S013811	17,84
1	Whisper size 1	- 12,00 mm	1S013821	19,14
2	Flat size 1	- 30,50 mm	1S013831	29,33
2	Whisper size 1	- 30,50 mm	1S013841	30,59
3	Flat size 2	- 48,00 mm	1S013851	35,66
3	Whisper size 2	- 48,00 mm	1S013861	36,97
	Flat / Whisper size 2	> 48,00 mm		on request

SPRING TYPE 2



FOR FORM PUNCHES				
1	Flat size 1	- 12,00 mm	1S013812	36,97
1	Whisper size 1	- 12,00 mm	1S013822	38,22
2	Flat size 1	- 30,50 mm	1S013832	56,06
2	Whisper size 1	- 30,50 mm	1S013842	57,35
3	Flat size 2	- 48,00 mm	1S013852	63,71
3	Whisper size 2	- 48,00 mm	1S013862	65,02
	Flat / Whisper size 2	> 48,00 mm		on request

SPRING TYPE 3

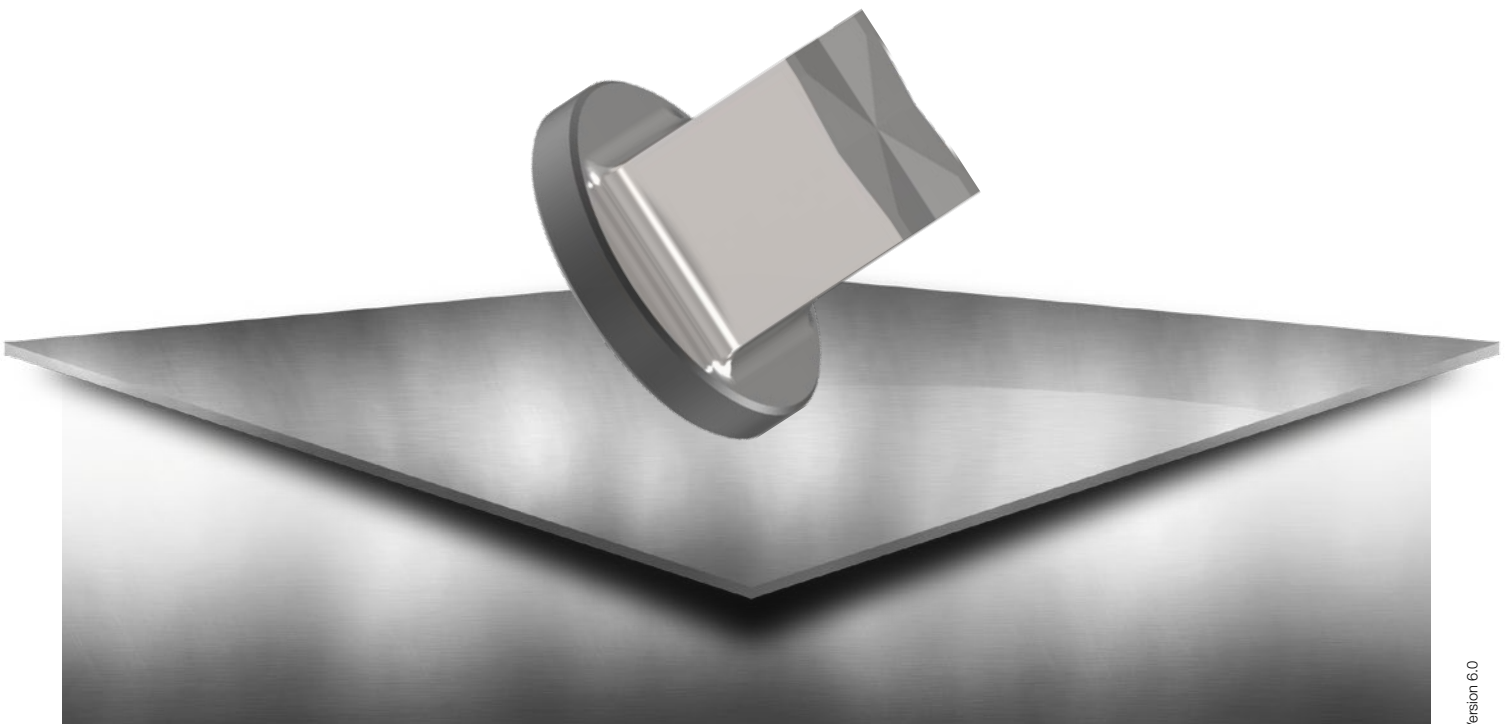


Details:

PUNCH SECTION

^(*) Flat = length 74,00 mm

^(*) Whisper = length 77,00 mm



WORKING EFFECTIVELY: EXTRA EQUIPMENT

PASS EXTRA EQUIPMENT FOR YOUR
TRUMPF SYSTEM

INDEX

Spare parts	page 64
Push-out stripper	page 65
Punch coatings	page 66
Draw-polishing	page 67
Punches with different shear types	page 68
slug-snap for dies	page 69

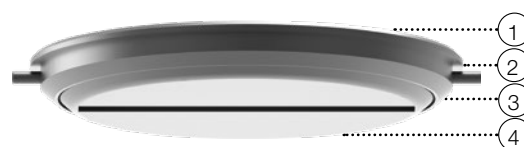
SPARE PARTS

DESCRIPTION	PART-NO.	PRICE IN €
SCREW		
M5 x 10 for punch chuck Ø 6,00 mm	905006	0,50
M6 x 6 for punch chuck Ø 10,50 mm	905019	0,60
M8 x 16 for adapter rings size 2/1	905009	0,75
M8 x 12 with pins for adapter rings size 3/1 - 3/2	905008	0,87
M14 x 1,5 x 12 for punch chuck	119991	2,44
PINS		
Ø 8 x 16 for adapter ring size 2/1	1-901013	1,26
Ø 8 x 16 for adapter ring size 3/1 - 3/2	2-901013	1,26
Ø 3 x 12 for stripper 5-station Multitool	115A30-2	0,56
Ø 3 x 12 for stripper 10-station Multitool	115A40-2	0,56
ps:®passfit		
Pin Ø 3 x 10 for adjusting ring size 1	901003	0,26
Adjusting key for punch size 2 + 3	118900006	15,28
SLITTING PUNCH BLADE INSERT AND DIE PLATE		
Pin Ø 6 x 16 for slitting punch blade holder	901012	1,04
Set of spare screws for die plate holder M4 x 12 - 6 pieces	1-907005	1,20
Set of spare screws for die plate holder M4 x 12 - 4 pieces	2-907005	0,80
MISCELLANEOUS		
Die clip for die	106991	0,37
Screw M6 x 25 for adjusting ring size 1 + 2	907013	0,48
Screw M3 x 8 for adjusting key	907062	0,26
Handle for stripper adapter ring „manual“ size 3/2	120326-2	12,74

PUSH-OUT STRIPPER

FOR MACHINE GROUPS H / I

DESCRIPTION	POSITION	PART-NO.	PRICE IN €
PUSH-OUT STRIPPER			
Round	1 - 4	1S21201	177,12
Square	1 - 4	1S21202	191,10
Rectangle	1 - 4	1S21203	203,83
Oblong	1 - 4	1S21204	203,83
Special shape	1 - 4	1S21200	on request
SPARE PARTS			
Spare screws (4 per set)	2	1S21291	15,28
Spare springs (4 per set)	3	1S21292	5,10

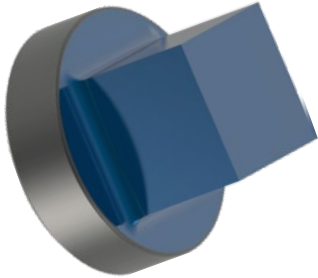


STRIPPER OPTIONS	Cross references:	see page
Polished version for low-scratch material handling	21,12	Standard tools
		Sitting tools
		Spare parts
		6 - 13
		30 - 32
		64

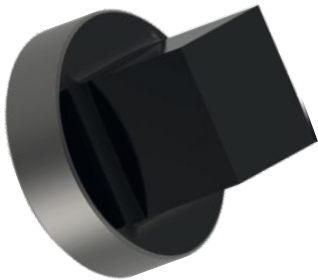
PUNCH COATINGS

ADVANTAGE ADVANTAGE: INCREASES TOOL LIFETIME, REDUCES MATERIAL BUILD UP

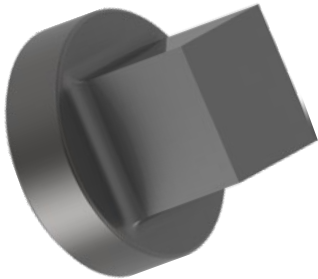
TICN



T-MAX



A-MAX



SIZE	RANGE	EXTRA CHARGE IN €
TICN COATING (WORKING WITH STAINLESS STEEL) ^(*)		
0	- 10,50 mm	13,68
1	- 30,50 mm	24,86
2	- 76,20 mm	39,78
3	- 105,00 mm	87,00
Multitool	- 16,00 mm	11,18
Slitting punch blade insert	- 60,00 mm	22,38
Slitting punch blade insert	- 80,00 mm	28,59
T-MAX COATING (WORKING WITH GALVANISED SHEET / ZINCOR) ^(*)		
0	- 10,50 mm	27,33
1	- 30,50 mm	49,71
2	- 76,20 mm	79,54
3	- 105,00 mm	174,01
Multitool	- 16,00 mm	22,38
Slitting punch blade insert	- 60,00 mm	44,74
Slitting punch blade insert	- 80,00 mm	57,18
A-MAX COATING (WORKING WITH ALUMINIUM) ^(*)		
0	- 10,50 mm	22,38
1	- 30,50 mm	38,53
2	- 76,20 mm	64,63
3	- 105,00 mm	139,21
Multitool	- 16,00 mm	16,17
Slitting punch blade insert	- 60,00 mm	33,54
Slitting punch blade insert	- 80,00 mm	44,74

Details:

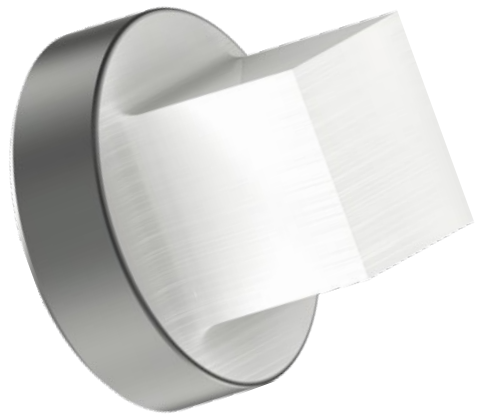
^(*) Suitable for cutting part sizes from Ø 4,00 mm or wide bases of 2,50 mm

DRAW-POLISHING

PUNCH EDGES

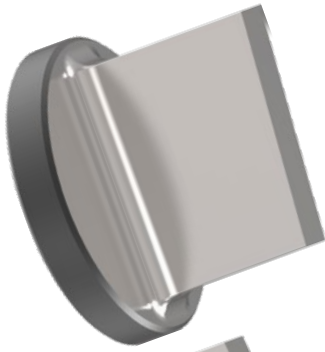
INCREASES TOOL LIFETIME, REDUCES MATERIAL BUILD UP

SIZE	RANGE	EXTRA CHARGE IN €
ROUND		
0	- 10,50 mm	21,12
1	- 30,50 mm	21,12
2	- 76,20 mm	27,33
3	- 105,00 mm	42,27
Multitool	- 16,00 mm	21,12
SQUARE / RECTANGLE / OBLONG		
0	- 10,50 mm	21,12
1	- 30,50 mm	21,12
2	- 76,20 mm	27,33
3	- 105,00 mm	42,27
Multitool	- 16,00 mm	21,12
O.D. GROUND SPECIAL SHAPES (SPECIAL SHAPE GROUP 1 & 2)		
0	- 10,50 mm	21,12
1	- 30,50 mm	21,12
2	- 76,20 mm	27,33
3	- 105,00 mm	42,27
Multitool	- 16,00 mm	21,12
EDM REQUIRED SPECIAL SHAPES (SPECIAL SHAPE GROUP 3 & 4)		
0	- 10,50 mm	94,46
1	- 30,50 mm	94,46
2	- 76,20 mm	147,91
3	- 105,00 mm	213,78
Multitool	- 16,00 mm	94,46

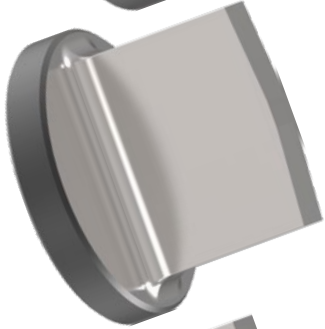


PUNCHES WITH DIFFERENT SHEAR TYPES

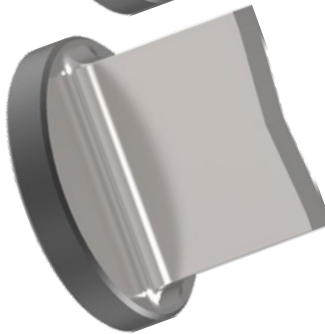
WT



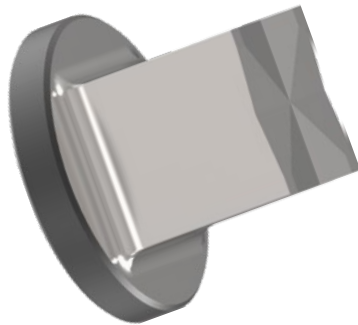
DOWT



2 PT



4 PT



DESCRIPTION

EXTRA CHARGE
IN €

SHEAR TYPES	
WT-shear (whisper shear)	5,10
DOWT-shear (rooftop shear)	7,64
2 PT-shear (inverted rooftop shear)	16,17
4 PT-shear (inverted cross shear)	23,61

SLUG-SNAP FOR DIES

SIZE	RANGE	EXTRA CHARGE IN €
FOR DIES ROUND		
1	- 32,00 mm	25,49
2	- 77,00 mm	53,50
1 reinforced form	- 32,00 mm	25,49
2 reinforced form	- 62,00 mm	53,50
Multitool	- 16,00 mm	25,49
FOR DIE FORM		
1	- 32,00 mm	31,88
2	- 77,00 mm	53,50
1 reinforced form	- 32,00 mm	31,88
2 reinforced form	- 62,00 mm	53,50
Multitool	- 16,00 mm	31,88



SLUG-SNAP

Details:

slug-snap

Special holding bolts are included in the die, clamping the slug positively (better than the slug-stop version, negative cutting part)

NOTES

A large grid of graph paper for taking notes, consisting of 20 columns and 40 rows of small squares.

A		P	
Accessories	45	Polishing	67
Adapter rings	47, 58	ps:®3D-RTC	53
Adjusting rings	46	ps:®easy-type	20
Adjusting rings (manual)	58	ps:®engraving	41
Adjustment	51	ps:®MT5 for punching	18
Adjustment unit	48	ps:®MT10 cutting die	24
A-MAX coating	66	ps:®MT10 for embossing	21
C		ps:®MT10 for punching	19
Centre punch tool	38, 39	ps:®passfit	51
Coating	66	ps:®signing	40
Compensating rings	49	ps:®single-thread	42
Cutting part, guided	14, 15	Punch chuck	47
D		Punch edges	67
Die plate	28, 29, 30, 31, 32, 33	Punches with different shear types	68
Draw-polishing	67	Punching Tools	5, 56, 57
E		Push-out stripper	65
Extra equipment	63	PU stripper	61
F		R	
Form punch	15	Round punch	14
I		RTC cartridge	
Inserts 4-station Multitool	22	Machine group H & I	52
Inserts 6-station Multitool	23	Size 2	52
M		Size 5	53
Multitool		S	
10-station die	24	Slitting close to embossing	
Machine group H and TC260	22, 23	5 x 56	33
Multitools	17	5 x 56 (PU)	34
		5 x 76,2 (PU)	35
		Slitting punch blade insert	30, 31, 32, 33
		Slitting tools	27
		5 x 30	30
		5 x 56	31, 33, 34
		5 x 76,2	32, 35
		ps:®T8-shear	28
		ps:®T8-trim	29
		slug-snap for dies	69
		Soft pads	50
		Spare parts	64
		Special shape	
		Standard	10, 11, 12, 13
		Specific tooling for Boschert	55
		Standard tools	
		Oblong	9
		Rectangle	8
		Round	6
		Square	7
		T	
		TICN coating	66
		T-MAX coating	66
		Tooling cassettes	52, 53
		Tools size 3	55

SALVAGNINI | THICK TURRET | TRUMPF



Am Steinkreuz 2
95473 Creußen | Germany

WEB: www.pass-ag.com
MAIL: info@pass-ag.com

FON: +49 (0) 92 70 / 9 85 - 0
FAX: +49 (0) 92 70 / 9 85 - 99