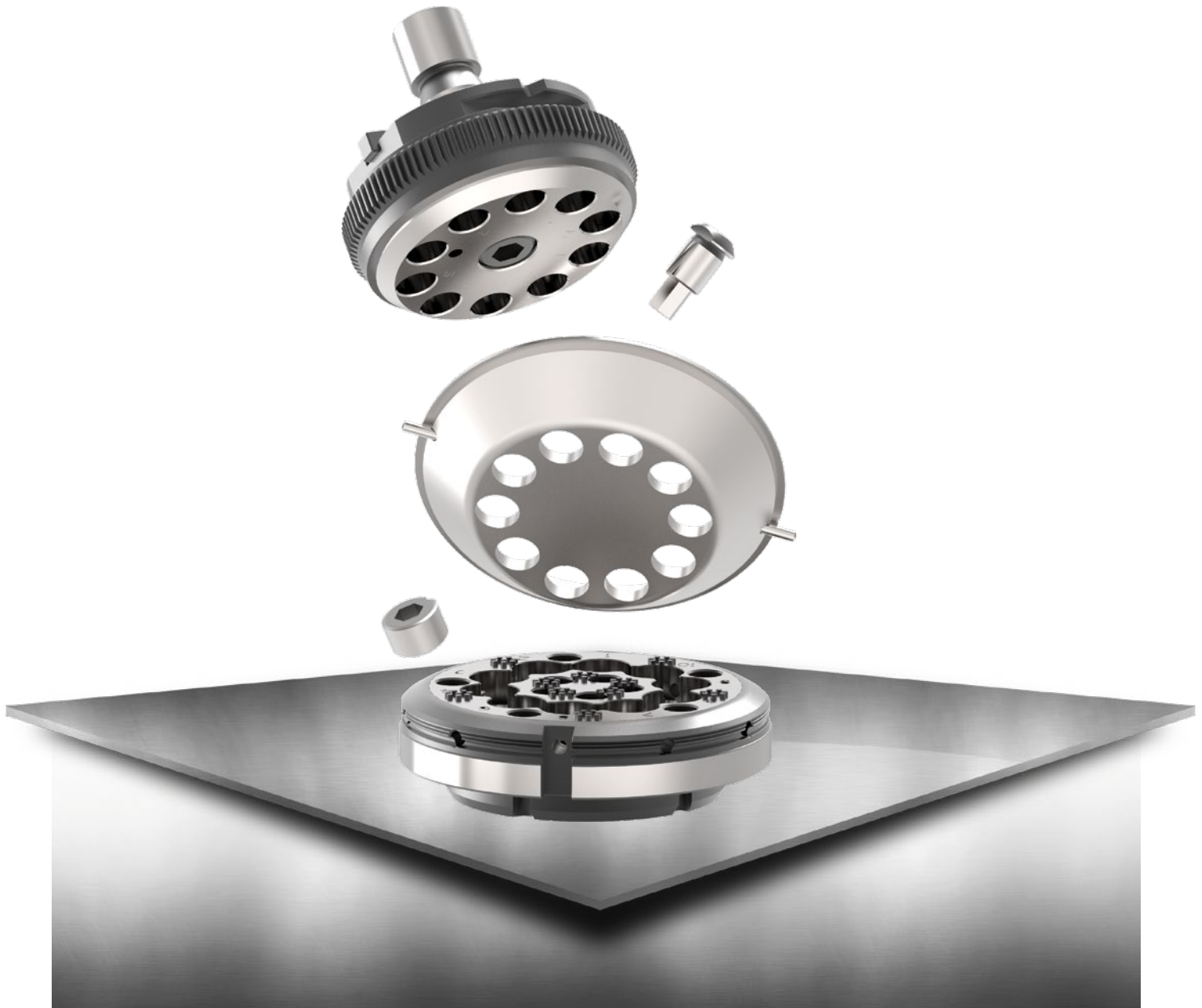




CATALOG 09/2024-VVV-T.1

# SYSTEM TRUMPF

# CATALOG 09/2024-WW-T.1



## SCOPE OF APPLICATION:

Deliveries and services provided by PASS Stanztechnik AG are effected exclusively according to PASS delivery and payment conditions. These conditions shall be deemed accepted at the latest upon receipt of the goods or services.

## GENERAL REMARKS:

You can find our general terms and conditions on our Homepage under: [www.pass-ag.com](http://www.pass-ag.com)

## PUNCHING TOOLS

Standard Tools Round.....	page 6
Standard Tools Square.....	page 7
Standard Tools Rectangle.....	page 8
Standard Tools Oblong.....	page 9
Special Shape Tools Group 1.....	page 10
Special Shape Tools Group 2.....	page 11
Special Shape Tools Group 3.....	page 12
Special Shape Tools Group 4.....	page 13
Punch with Guided Cutting Part - Round.....	page 14
Punch with Guided Cutting Part - Form.....	page 15

## MULTITOOLS

ps:®MT5 for punching.....	page 18
ps:®MT10 for punching.....	page 19
ps:®easy-type.....	page 20
ps:®MT10 for embossing.....	page 21
Inserts Multitool 4-Station.....	page 22
Inserts Multitool 6-Station.....	page 23
ps:®MT10 cutting die.....	page 24

## SLITTING TOOLS

ps:®T8-shear size 2 / 5 X 76,2.....	page 28
ps:®T8-trim size 2 / 18 X 73.....	page 29
Slitting Tool size 2 / 5 x 30 - Standard.....	page 30
Slitting Tool size 2 / 5 x 56 - Standard.....	page 31
Slitting Tool size 2 / 5 x 76,2 - Standard.....	page 32
Slitting Tool size 2 / 5 x 56 - spring loaded.....	page 33
Slitting Tool size 2 / 5 x 56 - PU.....	page 34
Slitting Tool size 2 / 5 x 76,2 - PU.....	page 35

## SPECIAL TOOLS

Centre Punch Tool from Above.....	page 38
Centre Punch Tool from Below.....	page 39
ps:®signing.....	page 40
ps:®engraving.....	page 41
ps:®single-thread.....	page 42

## ACCESSORIES

Adjusting rings.....	page 46
Punch Chucks, Adapter Rings.....	page 47
Adjustment Unit for Punch.....	page 48
Shims for Dies.....	page 49
Soft pads.....	page 50
ps:®passfit.....	page 51
ps:®3D-RTC - cartridge plastic size 2.....	page 52
ps:®3D-RTC - cartridge plastic size 5.....	page 53

## PASS TOOLS SIZE 3 AND SPECIFIC TOOLING FOR BOSCHERT PUNCHING MACHINES

Punching Tools (Standard) size 3.....	page 56
Punching Tools (Form) size 3.....	page 57
Adapter and Manual Adjusting Rings.....	page 58
Slitting Tool size 2.....	page 59
Slitting Tool size 3.....	page 60
PU stripper.....	page 61

## EXTRA EQUIPMENT

Spare parts.....	page 64
Push-out stripper.....	page 65
Punch coatings.....	page 66
Draw-polishing.....	page 67
Punches with different shear types.....	page 68
slug-snap for dies.....	page 69
Index.....	page 71



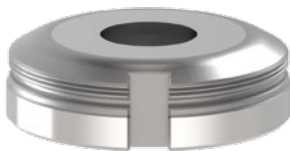
# RE-EXPERIENCE THE STANDARD: PUNCHING TOOLS

PASS TOOLS FOR YOUR  
TRUMPF SYSTEM

## INDEX

Standard Tools Round	page 6
Standard Tools Square	page 7
Standard Tools Rectangle	page 8
Standard Tools Oblong	page 9
Special Shape Tools Group 1	page 10
Special Shape Tools Group 2	page 11
Special Shape Tools Group 3	page 12
Special Shape Tools Group 4	page 13
Punch with Guided Cutting Part - Round	page 14
Punch with Guided Cutting Part - Form	page 15

# STANDARD TOOLS ROUND

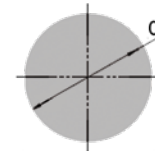


SIZE                      DIM. D                      PART-NO.

PUNCH (H-PM®)		
0	1,00 - 6,00	107A01C
0	6,01 - 10,50 <sup>(1)</sup>	107B01C
1	1,00 - 30,50	101111C
2	30,51 - 40,00	101211C
2	40,01 - 50,80	101221C
2	50,81 - 60,00	101231C
2	60,01 - 72,00	101241C
2	72,01 - 76,20	101251C
Reinforced	1,00 - 30,50	108111C
Reinforced	30,51 - 40,00	108121C

STRIPPER		
2	1,00 - 78,00	112211C

DIE (HWS)		
1 <sup>(2)</sup>	1,00 - 32,00	106111C
2 <sup>(3)</sup>	32,01 - 77,00	106211C
1 reinforced <sup>(2)</sup>	1,00 - 32,00	109111C
2 reinforced <sup>(3)</sup>	32,01 - 42,00	109221C
2 reinforced <sup>(3)</sup>	42,01 - 62,00	109231C



Cross references: see page

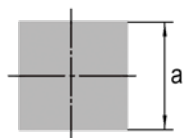
PUNCH OPTIONS	PUNCH	
Punches with shear (WT / DOWT / etc.) -> see page 68	Fully guided punch	14
<sup>(1)</sup> smaller 6,00 mm	Adjusting rings	46
Cutting part under 1,00 mm	Punch chuck	47
X3-PM quality	Additional costs for coating	66
	Polished cutting part	67

STRIPPER OPTIONS	STRIPPER	
PU coating for low-scratch material handling	Spare parts	64
	PU stripper	61

DIE OPTIONS	DIE	
<sup>(2)</sup> H-PM® quality	Adapter rings	47
<sup>(3)</sup> H-PM® quality	Compensating rings	49
Slug-stop version (negative cutting)	RTC cartridge and die carrier	52
Brush version for low-scratch material handling	Keyway clamps	64
X8-PM quality	Slug-snap version (for slug-problems)	69

# STANDARD TOOLS SQUARE

SIZE	DIM. A	PART-NO.
<b>PUNCH (H-PM®)</b>		
0	1,00 - 4,20	107A02C
0	4,21 - 7,40 <sup>(*)</sup>	107B02C
1	1,00 - 21,55	101112C
2	21,56 - 28,25	101212C
2	28,26 - 35,90	101222C
2	35,91 - 42,40	101232C
2	42,41 - 50,90	101242C
2	50,91 - 53,90	101252C
Reinforced	1,00 - 21,55	108112C
Reinforced	21,56 - 28,25	108122C
<b>STRIPPER</b>		
2	1,00 - 56,00	112212C
<b>DIE (HWS)</b>		
1 <sup>(2)</sup>	1,00 - 22,50	106112C
2 <sup>(3)</sup>	22,51 - 54,90	106212C
1 reinforced <sup>(2)</sup>	1,00 - 22,50	109112C
2 reinforced <sup>(3)</sup>	22,51 - 30,20	109222C
2 reinforced <sup>(3)</sup>	30,21 - 43,00	109232C



	Cross references:	see page
<b>PUNCH OPTIONS</b>	<b>PUNCH</b>	
Punches with shear (WT / DOWT / etc.) -> see page 68	Fully guided punch	15
<sup>(*)</sup> smaller 4,20 mm	Adjusting rings	46
Cutting part under 1,00 mm	Punch chuck	47
4 x same corner radius	ps:®passfit - explanation and additional costs	51
X3-PM quality	Additional costs for coating	66
	Polished cutting part	67
<b>STRIPPER OPTIONS</b>	<b>STRIPPER</b>	
PU coating for low-scratch material handling	Spare parts	64
	Push-out stripper	65
	PU stripper	61
<b>DIE OPTIONS</b>	<b>DIE</b>	
<sup>(2)</sup> H-PM® quality	Adapter rings	47
<sup>(3)</sup> H-PM® quality	Compensating rings	49
Slug-stop version (negative cutting)	RTC cartridge and die carrier	52
Additional keyway	Keyway clamps	64
Brush version for low-scratch material handling	Slug-snap version (for slug-problems)	69
X8-PM quality		

# STANDARD TOOLS RECTANGLE

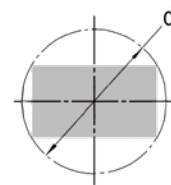


SIZE                      DIM. D                      PART-NO.

PUNCH (H-PM®)		
0	1,00 - 6,00	107A03C
0	6,01 - 10,50 <sup>(1)</sup>	107B03C
1	1,00 - 30,50	101113C
2	30,51 - 40,00	101213C
2	40,01 - 50,80	101223C
2	50,81 - 60,00	101233C
2	60,01 - 72,00	101243C
2	72,01 - 76,20	101253C
Reinforced	1,00 - 30,50	108113C
Reinforced	30,51 - 40,00	108123C

STRIPPER		
2	1,00 - 78,00	112213C

DIE (HWS)		
1 <sup>(2)</sup>	1,00 - 32,00	106113C
2 <sup>(3)</sup>	32,01 - 77,00	106213C
1 reinforced <sup>(2)</sup>	1,00 - 32,00	109113C
2 reinforced <sup>(3)</sup>	32,01 - 42,00	109223C
2 reinforced <sup>(3)</sup>	42,01 - 62,00	109233C



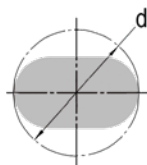
Cross references: see page

PUNCH OPTIONS	PUNCH	see page
Punches with shear (WT / DOWT / etc.) -> see page 68	Fully guided punch	15
<sup>(1)</sup> smaller 6,00 mm	Slitting punches for slittings close to embossing	34 - 35
Cutting part under 1,00 mm	Adjusting rings	46
4 x same corner radius	Punch chuck	47
X3-PM quality	ps:®passfit - explanation and additional costs	51
	Additional costs for coating	66
	Polished cutting part	67
STRIPPER OPTIONS	STRIPPER	
PU coating for low-scratch material handling	Spare parts	64
	Push-out stripper	65
	PU stripper	61
DIE OPTIONS	DIE	
<sup>(2)</sup> H-PM® quality	Adapter rings	47
<sup>(3)</sup> H-PM® quality	Compensating rings	49
Slug-stop version (negative cutting)	RTC cartridge and die carrier	52
Additional keyway	Keyway clamps	64
Brush version for low-scratch material handling	Slug-snap version (for slug-problems)	69
X8-PM quality		



# STANDARD TOOLS OBLONG

SIZE	DIM. D	PART-NO.
<b>PUNCH (H-PM®)</b>		
0	1,00 - 6,00	107A04C
0	6,01 - 10,50 <sup>(*)</sup>	107B04C
1	1,00 - 30,50	101114C
2	30,51 - 40,00	101214C
2	40,01 - 50,80	101224C
2	50,81 - 60,00	101234C
2	60,01 - 72,00	101244C
2	72,01 - 76,20	101254C
Reinforced	1,00 - 30,50	108114C
Reinforced	30,51 - 40,00	108124C
<b>STRIPPER</b>		
2	1,00 - 78,00	112214C
<b>DIE (HWS)</b>		
1 <sup>(2)</sup>	1,00 - 32,00	106114C
2 <sup>(3)</sup>	32,01 - 77,00	106214C
1 reinforced <sup>(2)</sup>	1,00 - 32,00	109114C
2 reinforced <sup>(3)</sup>	32,01 - 42,00	109224C
2 reinforced <sup>(3)</sup>	42,01 - 62,00	109234C



Cross references: see page

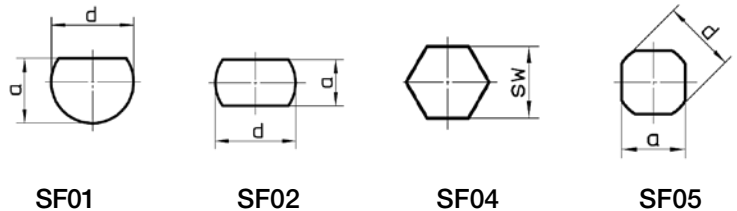
<b>PUNCH OPTIONS</b>	<b>PUNCH</b>	
Punches with shear (WT / DOWT / etc.) -> see page 68	Fully guided punch	15
<sup>(*)</sup> smaller 6,00 mm	Slitting punches for slittings close to embossing	34 - 35
Cutting part under 1,00 mm	Adjusting rings	46
X3-PM quality	Punch chuck	47
	ps:®passfit - explanation and additional costs	51
	Additional costs for coating	66
	Polished cutting part	67
<b>STRIPPER OPTIONS</b>	<b>STRIPPER</b>	
PU coating for low-scratch material handling	Spare parts	64
	Push-out stripper	65
	PU stripper	61
<b>DIE OPTIONS</b>	<b>DIE</b>	
<sup>(2)</sup> H-PM® quality	Adapter rings	47
<sup>(3)</sup> H-PM® quality	Compensating rings	49
Slug-stop version (negative cutting)	RTC cartridge and die carrier	52
Additional keyway	Keyway clamps	64
Brush version for low-scratch material handling	Slug-snap version (for slug-problems)	69
X8-PM quality		

# SPECIAL SHAPE TOOLS GROUP 1

(SF01, SF02, SF04, SF05)



SIZE	DIM. D	PART-NO.
<b>PUNCH (H-PM®)</b>		
0	1,00 - 6,00	121A0_C1
0	6,01 - 10,50 <sup>(1)</sup>	121B0_C1
1	1,00 - 30,50	12111_C1
2	30,51 - 40,00	12121_C1
2	40,01 - 50,80	12122_C1
2	50,81 - 60,00	12123_C1
2	60,01 - 72,00	12124_C1
2	72,01 - 76,20	12125_C1
Reinforced	1,00 - 30,50	V2111_C1
Reinforced	30,51 - 40,00	121V1_C1
<b>STRIPPER</b>		
2	1,00 - 78,00	127H1_C1
<b>DIE (HWS)</b>		
1 <sup>(2)</sup>	1,00 - 32,00	12611_C1
2 <sup>(3)</sup>	32,01 - 77,00	12621_C1
1 reinforced <sup>(2)</sup>	1,00 - 32,00	V2611_C1
2 reinforced <sup>(3)</sup>	32,01 - 42,00	126V1_C1
2 reinforced <sup>(3)</sup>	42,01 - 62,00	126V2_C1

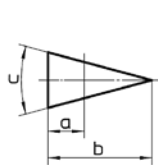


	Cross references:	see page
<b>PUNCH OPTIONS</b>	<b>PUNCH</b>	
Punches with shear (WT / DOWT / etc.) -> see page 68	Fully guided punch	15
<sup>(1)</sup> smaller 6,00 mm	Adjusting rings	46
Cutting part under 1,00 mm	Punch chuck	47
X3-PM quality	ps:®passfit - explanation and additional costs	51
	Additional costs for coating	66
	Polished cutting part	67
<b>STRIPPER OPTIONS</b>	<b>STRIPPER</b>	
PU coating for low-scratch material handling	Spare parts	64
	PU stripper	61
<b>DIE OPTIONS</b>	<b>DIE</b>	
<sup>(2)</sup> H-PM® quality	Adapter rings	47
<sup>(3)</sup> H-PM® quality	Compensating rings	49
Slug-stop version (negative cutting)	RTC cartridge and die carrier	52
Additional keyway	Keyway clamps	64
Brush version for low-scratch material handling	Slug-snap version (for slug-problems)	69
X8-PM quality		

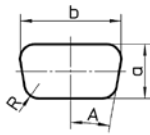
# SPECIAL SHAPE TOOLS GROUP 2

(SF03, SF07, SF13, SF17)

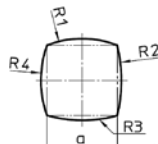
	SIZE	DIM. D	PART-NO.
<b>PUNCH (H-PM®)</b>			
	0	1,00 - 6,00	121A0_C2
	0	6,01 - 10,50 <sup>(*)</sup>	121B0_C2
	1	1,00 - 30,50	12111_C2
	2	30,51 - 40,00	12121_C2
	2	40,01 - 50,80	12122_C2
	2	50,81 - 60,00	12123_C2
	2	60,01 - 72,00	12124_C2
	2	72,01 - 76,20	12125_C2
	Reinforced	1,00 - 30,50	V2111_C2
	Reinforced	30,51 - 40,00	121V1_C2
<b>STRIPPER</b>			
	2	1,00 - 78,00	127H1_C2
<b>DIE (HWS)</b>			
	1 <sup>(**)</sup>	1,00 - 32,00	12611_C2
	2 <sup>(***)</sup>	32,01 - 77,00	12621_C2
	1 reinforced <sup>(**)</sup>	1,00 - 32,00	V2611_C2
	2 reinforced <sup>(**)</sup>	32,01 - 42,00	126V1_C2
	2 reinforced <sup>(**)</sup>	42,01 - 62,00	126V2_C2



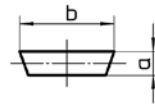
SF03



SF07



SF13



SF17



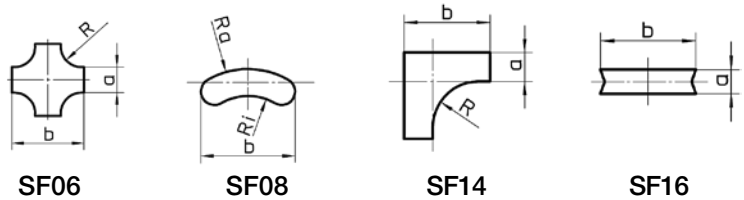
	Cross references:	see page
<b>PUNCH OPTIONS</b>	<b>PUNCH</b>	
Punches with shear (WT / DOWT / etc.) -> see page 68	Fully guided punch	15
<sup>(*)</sup> smaller 6,00 mm	Slitting punches for slittings close to embossing	34 - 35
Cutting part under 1,00 mm	Adjusting rings	46
X3-PM quality	Punch chuck	47
	ps:®passfit - explanation and additional costs	51
	Additional costs for coating	66
	Polished cutting part	67
<b>STRIPPER OPTIONS</b>	<b>STRIPPER</b>	
PU coating for low-scratch material handling	Spare parts	64
	Push-out stripper	65
	PU stripper	61
<b>DIE OPTIONS</b>	<b>DIE</b>	
<sup>(**)</sup> H-PM® quality	Adapter rings	47
<sup>(***)</sup> H-PM® quality	Compensating rings	49
Slug-stop version (negative cutting)	RTC cartridge and die carrier	52
Additional keyway	Keyway clamps	64
Brush version for low-scratch material handling	Slug-snap version (for slug-problems)	69
X8-PM quality		

# SPECIAL SHAPE TOOLS GROUP 3

(SF06, SF08, SF14, SF16)



SIZE	DIM. D	PART-NO.
<b>PUNCH (H-PM®)</b>		
0	1,00 - 6,00	121A0_C3
0	6,01 - 10,50 <sup>(1)</sup>	121B0_C3
1	1,00 - 30,50	12111_C3
2	30,51 - 40,00	12121_C3
2	40,01 - 50,80	12122_C3
2	50,81 - 60,00	12123_C3
2	60,01 - 72,00	12124_C3
2	72,01 - 76,20	12125_C3
Reinforced	1,00 - 30,50	V2111_C3
Reinforced	30,51 - 40,00	121V1_C3
<b>STRIPPER</b>		
2	1,00 - 78,00	127H1_C3
<b>DIE (HWS)</b>		
1 <sup>(2)</sup>	1,00 - 32,00	12611_C3
2 <sup>(3)</sup>	32,01 - 77,00	12621_C3
1 reinforced <sup>(2)</sup>	1,00 - 32,00	V2611_C3
2 reinforced <sup>(3)</sup>	32,01 - 42,00	126V1_C3
2 reinforced <sup>(3)</sup>	42,01 - 62,00	126V2_C3

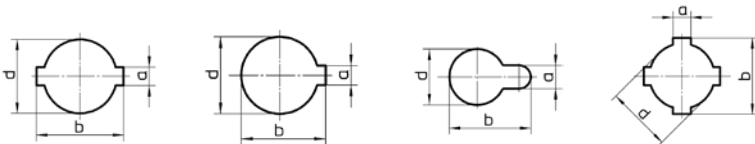


	Cross references:	see page
<b>PUNCH OPTIONS</b>	<b>PUNCH</b>	
Punches with shear (WT / DOWT / etc.) -> see page 68	Fully guided punch	15
<sup>(1)</sup> smaller 6,00 mm	Slitting punches for slittings close to embossing	34 - 35
Cutting part under 1,00 mm	Adjusting rings	46
X3-PM quality	Punch chuck	47
	ps:®passfit - explanation and additional costs	51
	Additional costs for coating	66
	Polished cutting part	67
<b>STRIPPER OPTIONS</b>	<b>STRIPPER</b>	
PU coating for low-scratch material handling	Spare parts	64
	Push-out stripper	65
	PU stripper	61
<b>DIE OPTIONS</b>	<b>DIE</b>	
<sup>(2)</sup> H-PM® quality	Adapter rings	47
<sup>(3)</sup> H-PM® quality	Compensating rings	49
Slug-stop version (negative cutting)	RTC cartridge and die carrier	52
Additional keyway	Keyway clamps	64
Brush version for low-scratch material handling	Slug-snap version (for slug-problems)	69
X8-PM quality		

# SPECIAL SHAPE TOOLS GROUP 4

(SF09, SF10, SF11, SF12)

SIZE	DIM. D	PART-NO.
<b>PUNCH (H-PM®)</b>		
0	1,00 - 6,00	121A0_C4
0	6,01 - 10,50 <sup>(*)</sup>	121B0_C4
1	1,00 - 30,50	12111_C4
2	30,51 - 40,00	12121_C4
2	40,01 - 50,80	12122_C4
2	50,81 - 60,00	12123_C4
2	60,01 - 72,00	12124_C4
2	72,01 - 76,20	12125_C4
Reinforced	1,00 - 30,50	V2111_C4
Reinforced	30,51 - 40,00	121V1_C4
<b>STRIPPER</b>		
2	1,00 - 78,00	127H1_C4
<b>DIE (HWS)</b>		
1 <sup>(2)</sup>	1,00 - 32,00	12611_C4
2 <sup>(3)</sup>	32,01 - 77,00	12621_C4
1 reinforced <sup>(2)</sup>	1,00 - 32,00	V2611_C4
2 reinforced <sup>(3)</sup>	32,01 - 42,00	126V1_C4
2 reinforced <sup>(3)</sup>	42,01 - 62,00	126V2_C4



SF09

SF10

SF11

SF12



Cross references: see page

<b>PUNCH OPTIONS</b>	<b>PUNCH</b>	
Punches with shear (WT / DOWT / etc.) -> see page 68	Fully guided punch	15
<sup>(*)</sup> smaller 6,00 mm	Adjusting rings	46
Cutting part under 1,00 mm	Punch chuck	47
X3-PM quality	ps:®passfit - explanation and additional costs	51
	Additional costs for coating	66
	Polished cutting part	67
<b>STRIPPER OPTIONS</b>	<b>STRIPPER</b>	
PU coating for low-scratch material handling	Spare parts	64
	PU stripper	61
<b>DIE OPTIONS</b>	<b>DIE</b>	
<sup>(2)</sup> H-PM® quality	Adapter rings	47
<sup>(3)</sup> H-PM® quality	Compensating rings	49
Slug-stop version (negative cutting)	RTC cartridge and die carrier	52
Additional keyway	Keyway clamps	64
Brush version for low-scratch material handling	Slug-snap version (for slug-problems)	69
X8-PM quality<GT>		

# PUNCH WITH GUIDED CUTTING PART - ROUND

FOR ROUND PUNCH (DIMENSION D = 0,50 MM – 6,00 MM / 6,01 MM – 10,50 MM)



DESCRIPTION	POSITION	PART-NO.
<b>UP TO 6,00 MM</b>		
Complete upper part	1 - 5	1S160A
Stripper round 26 mm	6	112211C26
Die (HWS) <sup>(*)</sup>	7	106111C

SPARE PARTS		
Spare punch needle (H-PM <sup>®</sup> )	2	1S16SA
Spare spring	3	1S1608
Spare guide	5	1S1603
Spare clamp nut	4	1S1607

UP TO 10,50 MM		
Complete upper part <sup>(*)</sup>	1 - 5	1S160B
Stripper round 26 mm	6	112211C26
Die (HWS) <sup>(*)</sup>	7	106111C

SPARE PARTS		
Spare punch needle (H-PM <sup>®</sup> ) <sup>(*)</sup>	2	1S16SB
Spare spring	3	1S1609
Spare guide	5	1S1604
Spare clamp nut	4	1S1607

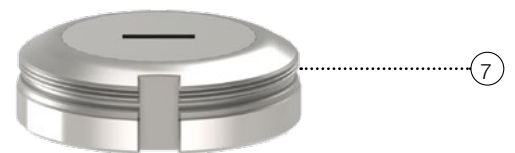
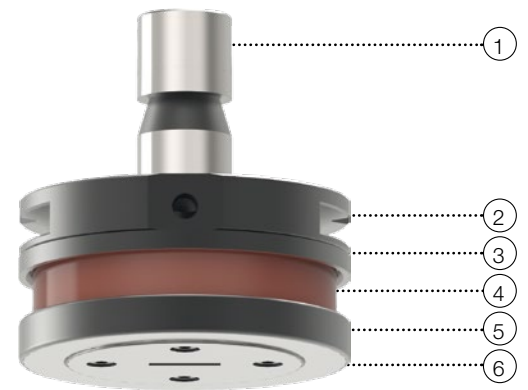
Cross references: see page

PUNCH OPTIONS	PUNCH	
<sup>(*)</sup> smaller 6,00 mm	Standard round punch	6
Cutting part under 1,00 mm	Suitable adjusting ring - part-no. 118101	46
	Punch chuck	47
	Additional costs for coating (such as size 0)	66
	Polished cutting part (such as size 0)	67
STRIPPER OPTIONS	STRIPPER	
PU coating for low-scratch material handling	Spare parts	64
DIE OPTIONS	DIE	
<sup>(*)</sup> H-PM <sup>®</sup> quality	Adapter rings	47
Brush version for low-scratch material handling	Compensating rings	49
	RTC cartridge and die carrier	52
	Slug-snap version (for slug-problems)	69

# PUNCH WITH GUIDED CUTTING PART - FORM

FOR FORM PUNCH (DIMENSION D = 0,50 MM – 16,00 MM)

DESCRIPTION	POSITION	PART-NO.
<b>SQUARE</b>		
Complete upper part	1 - 6	1S16502
Spare punch (H-PM®)	3	1S16532
Spare spring	4	1S16540
Spare guide	6	1S16562
Die (HWS) <sup>(2)</sup>	7	106112C
<b>RECTANGLE</b>		
Complete upper part	1 - 6	1S16503
Spare punch (H-PM®)	3	1S16533
Spare spring	4	1S16540
Spare guide	6	1S16563
Die (HWS) <sup>(2)</sup>	7	106113C
<b>OBLONG</b>		
Complete upper part	1 - 6	1S16504
Spare punch (H-PM®)	3	1S16534
Spare spring	4	1S16540
Spare guide	6	1S16564
Die (HWS) <sup>(2)</sup>	7	106114C
<b>SPECIAL SHAPES</b>		
Complete upper part	1 - 6	on request
Spare punch (H-PM®)	3	on request
Spare spring	4	on request
Spare guide	6	on request
Die (HWS) <sup>(2)</sup>	7	on request



Cross references: see page

PUNCH OPTIONS	PUNCH	
Cutting part under 1,00 mm	Standard punch	from 7
	Punch chuck	47
	Additional costs for coating (such as size 1)	66
	Polished cutting part (such as size 1)	67

STRIPPER OPTIONS	STRIPPER	
Polished version for low-scratch material handling	Spare parts	64

DIE OPTIONS	DIE	
<sup>(2)</sup> H-PM® quality	Adapter rings	47
Brush version for low-scratch material handling	Compensating rings	49
	RTC cartridge and die carrier	52
	Keyway clamps	64
	Slug-snap version (for slug-problems)	69





# BEING MULTILATERAL: MULTITOOLS

PASS TOOLS FOR YOUR  
TRUMPF SYSTEM

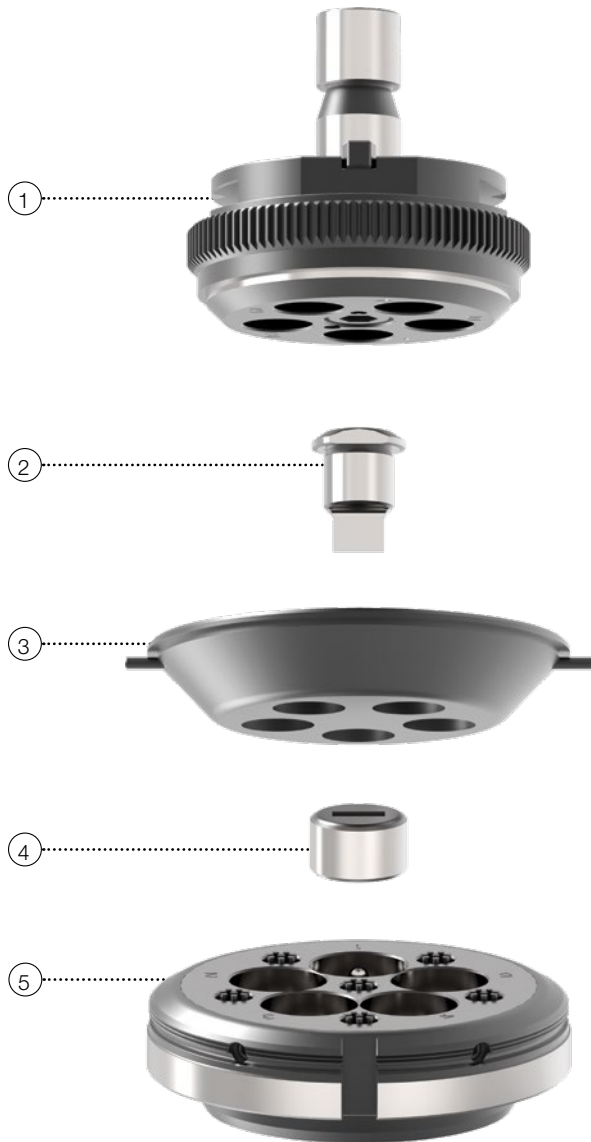
## INDEX

ps:®MT5 for punching	page 18
ps:®MT10 for punching	page 19
ps:®easy-type	page 20
ps:®MT10 for embossing	page 21
Inserts Multitool 4-Station	page 22
Inserts Multitool 6-Station	page 23
ps:®MT10 cutting die	page 24

# ps:®MT5 FOR PUNCHING

FOR MACHINE GROUP I (DIMENSION 1,00 MM – 16,00 MM)

(TRUPUNCH1000, 2000, 2020, 3000, 5000 TRUMATIC1000, 3000, 6000, 7000)



DESCRIPTION	POSITION	PART-NO.
<b>PUNCH HOLDER</b>		
Punch holder	1	113S30
<b>PUNCH (H-PM®)</b>		
Round	2	113N31
Square	2	113N32
Rectangle	2	113N33
Oblong	2	113N34
Special shape	2	on request
<b>STRIPPER</b>		
Round 17	3	115A30
With PU surface round 17	3*	115PU30
With customized shape	3*	115B30
<b>DIES (H-PM®)</b>		
Round	4	114031
Square	4	114032
Rectangle	4	114033
Oblong	4	114034
Special shape	4	on request
<b>DIE HOLDER</b>		
Die holder	5	114Z30

\* no picture

Cross references: see page

PUNCH AND PUNCH HOLDER OPTIONS	PUNCH
Max. sheet thickness - steel and alu up to 4,50 mm / stainless steel up to 3,00 mm	Types of special shapes 10 - 13
Cutting part under 1,00 mm	Additional costs for coating (Multitool) 66
	Polished cutting part (Multitool) 67

STRIPPER OPTIONS	STRIPPER
Polished version for low-scratch material handling	Spare parts 64

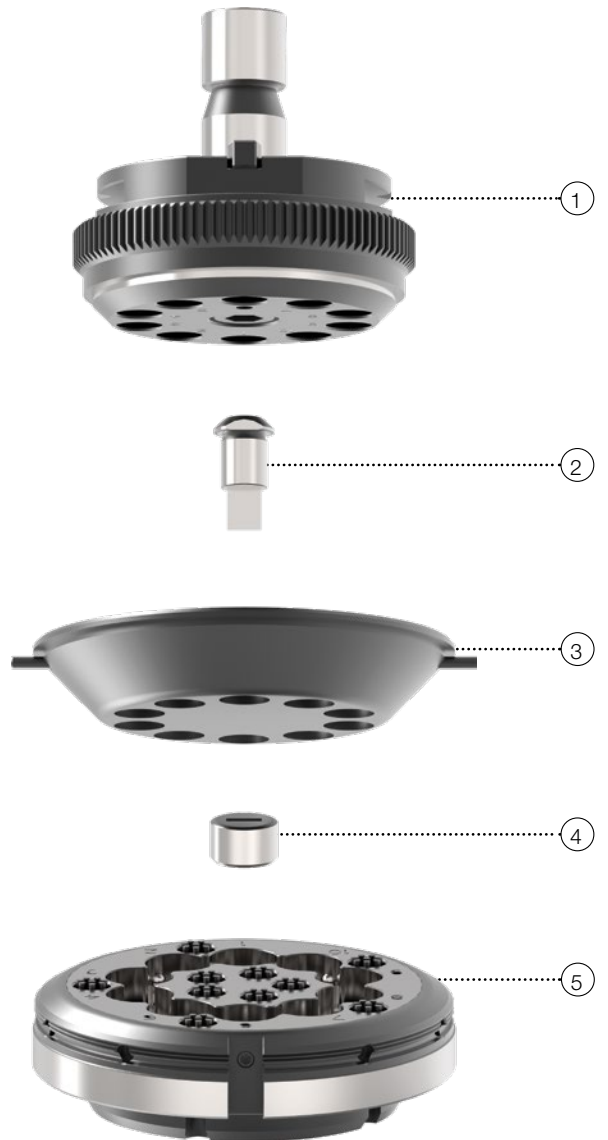
DIE OPTIONS	DIE
Slug-stop version (negative cutting)	RTC cartridge and die carrier 52
Set of shims: (2xt = 0,1 / 2xt = 0,3 / 2xt = 0,5) - part-no. 114U3M	Slug-snap version (for slug-problems) 69

# ps:®MT10 FOR PUNCHING

FOR MACHINE GROUP I (DIMENSION 1,00 MM – 10,50 MM)  
(TRUPUNCH1000, 2000, 2020, 3000, 5000 TRUMATIC1000, 3000, 6000, 7000)

DESCRIPTION	POSITION	PART-NO.
<b>PUNCH HOLDER</b>		
Punch holder	1	113S40
<b>PUNCH (H-PM®)</b>		
Round	2	113N41
Square	2	113N42
Rectangle	2	113N43
Oblong	2	113N44
Special shape	2	on request
<b>STRIPPER</b>		
Round 12	3	115A40
With PU surface round 12	3*	115PU40
With customized shape	3*	115B40
<b>DIES (H-PM®)</b>		
Round	4	114041
Square	4	114042
Rectangle	4	114043
Oblong	4	114044
Special shape	4	on request
<b>DIE HOLDER</b>		
Die holder	5	114Z40

\* no picture



Cross references: see page

PUNCH AND PUNCH HOLDER OPTIONS	PUNCH	see page
Max. sheet thickness - steel and alu up to 4,50 mm / stainless steel up to 3,00 mm	Types of special shapes	10 - 13
Cutting part under 1,00 mm	Additional costs for coating (Multitool)	66
	Polished cutting part (Multitool)	67

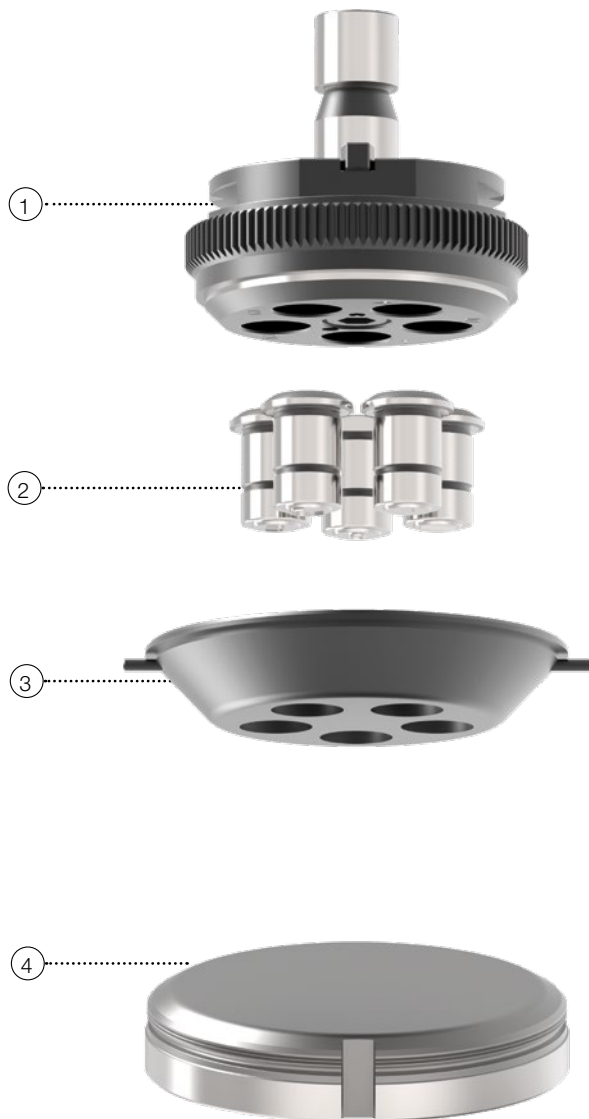
STRIPPER OPTIONS	STRIPPER	see page
Polished version for low-scratch material handling	Spare parts	64

DIE OPTIONS	DIE	see page
Slug-stop version (negative cutting)	Version as one piece die insert	24
Set of shims: (2xt = 0,1 / 2xt = 0,3 / 2xt = 0,5) - part-no. 114U4M	RTC cartridge and die carrier	52
	Slug-snap version (for slug-problems)	69

# ps:® easy-type

FOR MACHINE GROUP I

(TRUPUNCH1000, 2000, 2020, 3000, 5000 TRUMATIC1000, 3000, 6000, 7000)



DESCRIPTION	POSITION	PART-NO.
<b>PUNCH HOLDER</b>		
Punch holder	1	113S30
<b>PUNCH (SET CONSISTS OF: o, u, C, l, I)</b>		
Set with letter height 4 mm	2	Z677450
Set with letter height 5 mm	2	Z677492
Set with letter height 6 mm	2	Z677493
Set with letter height 8 mm	2	Z677511
Set with letter height 10 mm	2	Z677512
<b>STRIPPER</b>		
Round 17	3	115A30
With PU surface round 17	3*	115PU30
<b>EMBOSSING DIE</b>		
Embossing die	4	113PM10

\* no picture

## STRIPPER OPTIONS

Stripper in polished version for low-scratch material handling

## Cross references

### ACCESSORIES

RTC cartridge and die carrier -> see page 52

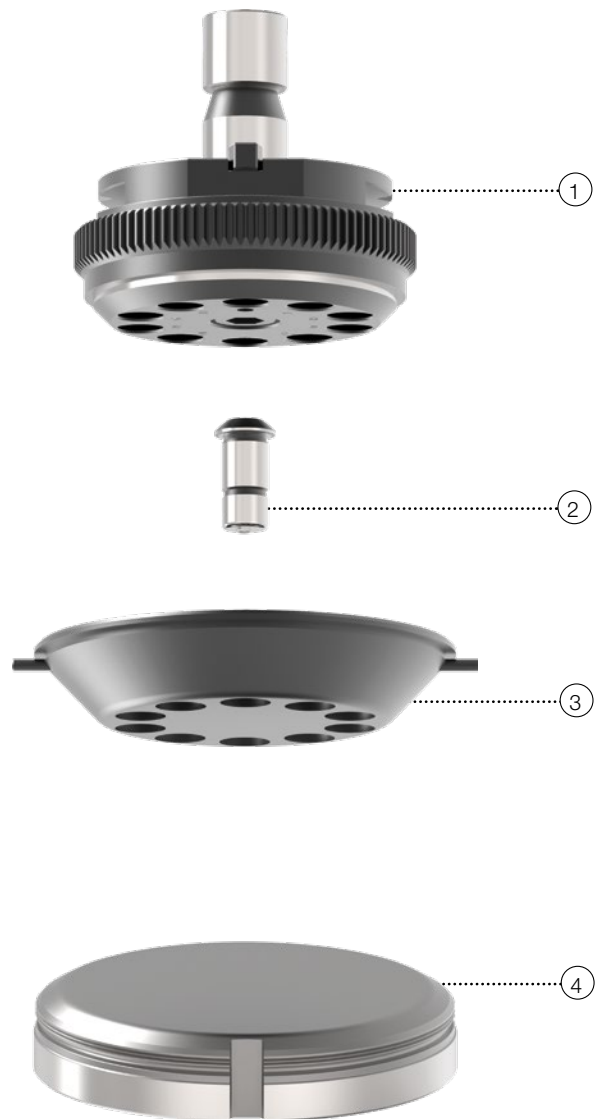
# ps:®MT10 FOR EMBOSSING

FOR MACHINE GROUP I

(TRUPUNCH1000, 2000, 2020, 3000, 5000 TRUMATIC1000, 3000, 6000, 7000)

DESCRIPTION	POSITION	PART-NO.
<b>PUNCH HOLDER</b>		
Punch holder	1	113S40
<b>PUNCH INSERT</b>		
Letter, digit or special sign on customer request	2	113P10_?
<b>STRIPPER</b>		
Round 12	3	115A40
With PU surface round 12	3*	115PU40
<b>EMBOSSING DIE</b>		
Embossing die	4	113PM10

\* no picture



Cross references / Additional costs:

## STRIPPER OPTIONS

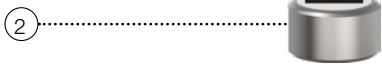
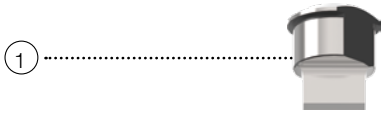
Stripper in polished version for low-scratch material handling

## ACCESSORIES

RTC cartridge and die carrier -> see page 52

# INSERTS MULTITOOL 4-STATION

FOR MACHINE GROUP H AND TC260 (DIMENSION 1,00 MM – 16,00 MM)  
(TC600L, TC500R, TC200R, TC260R, TC260L)



DESCRIPTION	POSITION	PART-NO.
<b>PUNCH (H-PM®)</b>		
Round	1	113N11
Square	1	113N12
Rectangle	1	113N13
Oblong	1	113N14
Special shape	1	on request
<b>DIES (H-PM®)</b>		
Round	2	114011
Square	2	114012
Rectangle	2	114013
Oblong	2	114014
Special shape	2	on request

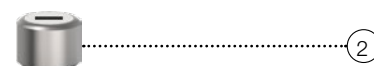
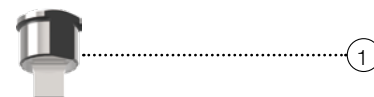
	Cross references:	see page
<b>PUNCH OPTIONS</b>	<b>PUNCH</b>	
Max. sheet thickness - steel and alu up to 3,00 mm / stainless steel up to 2,00 mm	Types of special shapes	10 - 13
Cutting part under 1,00 mm	Additional costs for coating (Multitool)	66
	Polished cutting part (Multitool)	67

DIE OPTIONS	DIE	
Slug-stop version (negative cutting)	Slug-snap version (for slug-problems)	69
Set of shims: (2xt = 0,1 / 2xt = 0,3 / 2xt = 0,5) - part-no. 114U1M		

# INSERTS MULTITOOL 6-STATION

FOR MACHINE GROUP H AND TC260 (DIMENSION 1,00 MM – 10,50 MM)  
(TC600L, TC500R, TC200R, TC260R, TC260L)

DESCRIPTION	POSITION	PART-NO.
<b>PUNCH (H-PM®)</b>		
Round	1	113N21
Square	1	113N22
Rectangle	1	113N23
Oblong	1	113N24
Special shape	1	on request
<b>DIES (H-PM®)</b>		
Round	2	114021
Square	2	114022
Rectangle	2	114023
Oblong	2	114024
Special shape	2	



PUNCH OPTIONS	Cross references:	see page
Max. sheet thickness - steel and alu up to 3,00 mm / stainless steel up to 2,00 mm	PUNCH	
Cutting part under 1,00 mm	Types of special shapes	10 - 13
	Additional costs for coating (Multitool)	66
	Polished cutting part (Multitool)	67

DIE OPTIONS	DIE	
Slug-stop version (negative cutting)	Slug-snap version (for slug-problems)	69
Set of shims: (2xt = 0,1 / 2xt = 0,3 / 2xt = 0,5) - part-no. 114U2M		

# ps:®MT10 CUTTING DIE

FOR MULTITOOL MACHINE GROUP I (DIMENSION 1,00 MM - 10,50 MM)

(TRUPUNCH1000, 2000, 2020, 3000, 5000 TRUMATIC1000, 3000, 6000, 7000)



DESCRIPTION	POSITION	PART-NO.
<b>CUTTING DIE (H-PM®)</b>		
Shapes on customer request	1	114941
<b>CUTTING DIE HOLDER (*)</b>		
Without cutting die, incl. 1 set of shims	2	114640

## CUTTING DIE HOLDER AND CUTTING DIE OPTIONS

Slug-stop version (negative cutting)

Slug-snap version (for slug-problems)

Set of shims:

(2xt = 0,1 / 2xt = 0,3 / 2xt = 0,5) - part-no. 114U4MG



A large grid of graph paper for taking notes, consisting of 20 columns and 40 rows of small squares.



# SLITTING TOOLS

PASS TOOLS FOR YOUR  
TRUMPF SYSTEM

## INDEX

ps:®T8-shear size 2 / 5 X 76,2	page 28
ps:®T8-trim size 2 / 18 X 73	page 29
Slitting Tool size 2 / 5 x 30 - Standard	page 30
Slitting Tool size 2 / 5 x 56 - Standard	page 31
Slitting Tool size 2 / 5 x 76,2 - Standard	page 32
Slitting Tool size 2 / 5 x 56 - spring loaded	page 33
Slitting Tool size 2 / 5 x 56 - PU	page 34
Slitting Tool size 2 / 5 x 76,2 - PU	page 35

# ps:<sup>®</sup>T8-shear SIZE 2 / 5 X 76,2

## INTEGRATED ADJUSTING RING AND DIE PLATE



DESCRIPTION	POSITION	PART-NO.
<b>PUNCH</b>		
With integrated adjusting ring	1	1S108100
<b>STRIPPER</b>		
Stripper	2	1S108110
<b>DIE PLATE</b>		
Single	3	1S108131
Pair	3*	1S108132
<b>DIE PLATE HOLDER</b>		
Without die plate	4	1S108120

\* no picture

### PUNCH OPTIONS

Max. sheet thickness up to  $s = 3,00$  mm

### Cross references:

see page

### PUNCH

Additional costs for coating

66

RTC cartridge and die carrier

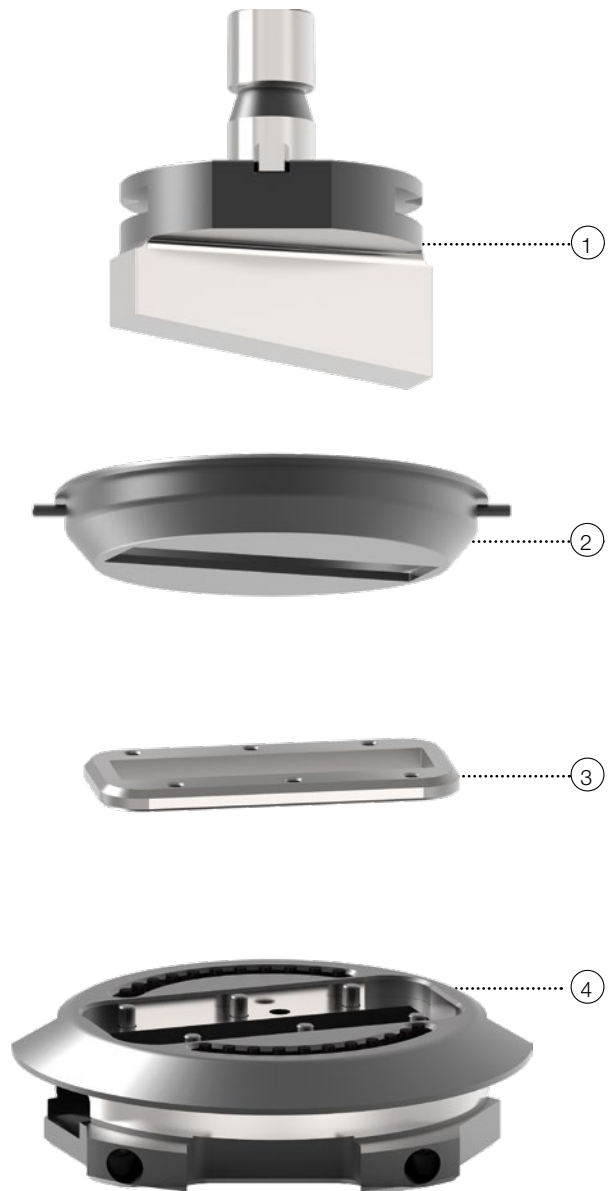
52

# ps:<sup>®</sup>T8-trim SIZE 2 / 18 X 73

## INTEGRATED ADJUSTING RING, DIE PLATE

DESCRIPTION	POSITION	PART-NO.
<b>PUNCH</b>		
With integrated adjusting ring	1	1S108200
<b>STRIPPER</b>		
Stripper	2	1S108210
<b>DIE PLATE</b>		
Single	3	1S108231
Pair	3*	1S108232
<b>DIE PLATE HOLDER</b>		
Without die plate	4	1S108220

\* no picture



Cross references:

see page

### PUNCH OPTIONS

Max. sheet thickness up to  $s = 3,00$  mm

### PUNCH

Additional costs for coating

66

RTC cartridge and die carrier

52

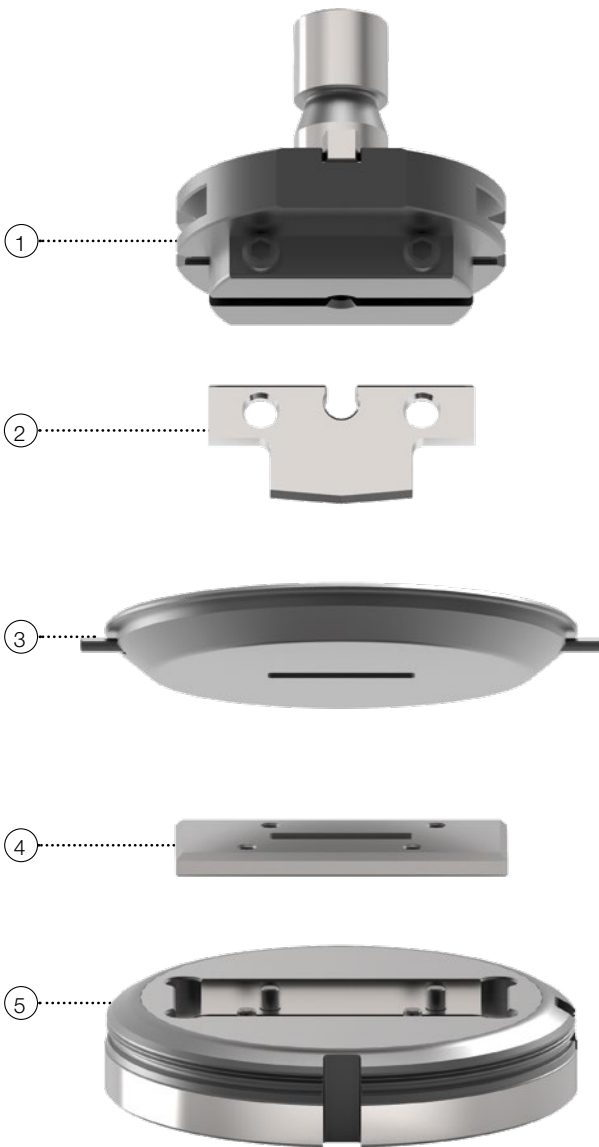
### CUTTING DIE HOLDER OPTIONS

Shim 0,3 mm - 1S108253

Shim 0,5 mm - 1S108255

# SLITTING TOOL SIZE 2 / 5 X 30 - STANDARD

INTEGRATED ADJUSTING RING, SLITTING PUNCH BLADE, DIE PLATE



DESCRIPTION	POSITION	PART-NO.
<b>COMPLETE TOOL <sup>(1)</sup></b>		
Oblong	1 - 5	1S0433110
Rectangle	1 - 5	1S0433120
Rectangle with 4 x R = 0,5	1 - 5	1S0433130
Trapezoid SF17	1 - 5	1S0433140
Double Trapezoid SF16	1 - 5	1S0433150
<b>SLITTING PUNCH BLADE HOLDER (WITHOUT PUNCH BLADE INSERT)</b>		
With integrated adjusting ring	1	1S0393
<b>SLITTING PUNCH BLADE INSERT (H-PM<sup>®</sup>) <sup>(1)</sup></b>		
Oblong	2	1S04331
Rectangle	2	1S04332
Rectangle with 4 x R = 0,5	2	1S04333
Trapezoid SF17	2	1S04334
Double Trapezoid SF16	2	1S04335
<b>STRIPPER</b>		
Oblong	3	119234
Rectangle	3	119233
Rectangle with 4 x R = 0,5	3	119233
Trapezoid SF17	3	119237
Double Trapezoid SF16	3	119236
<b>DIE PLATE (H-PM<sup>®</sup>)</b>		
Oblong	4	1S17251
Rectangle <sup>(2)</sup>	4	1S17252
Trapezoid SF17	4	1S17254
Double Trapezoid SF16	4	1S17255
<b>DIE PLATE ADAPTER (WITHOUT DIE PLATE) <sup>(3)</sup></b>		
Incl. screws	5	1S1730

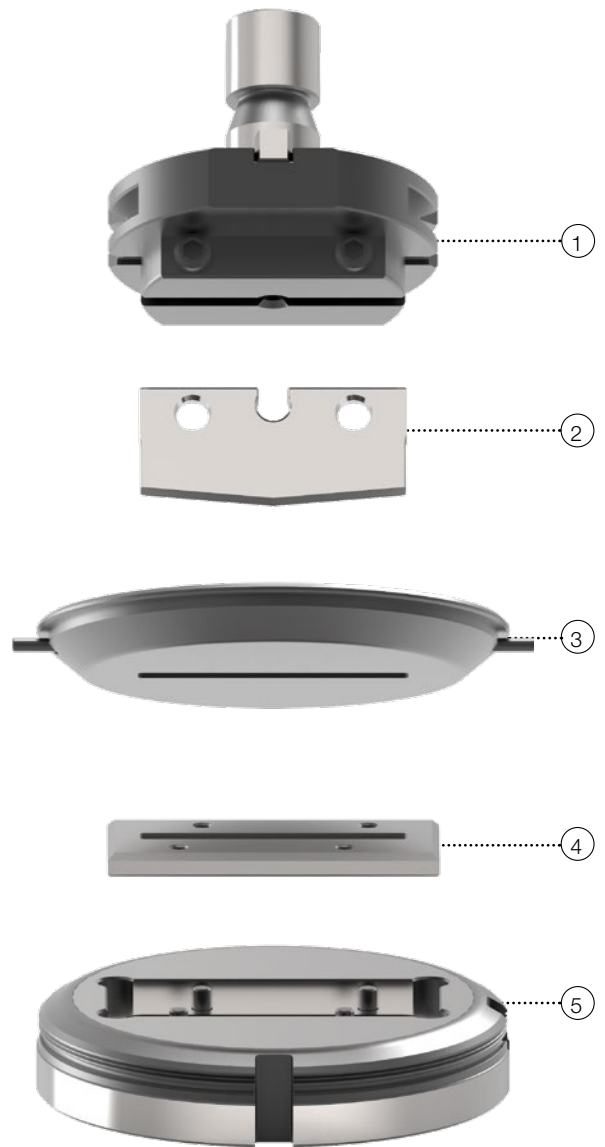
Cross references: see page

UPPER PART OPTIONS	UPPER PART	
Max. sheet thickness up to 3,00 mm	Additional costs for coating (slitting punch blade insert)	66
<sup>(1)</sup> Additional costs for reduced dimensional deviation	Polished cutting part (punch size 2)	67
<sup>(1)</sup> Standard version with rooftop		
Set of screws M 8 x 16 (2 pc per set)		
Part-no. 1S0393Z		
STRIPPER OPTIONS	STRIPPER	
PU coating for low-scratch material handling	Spare parts	64
	Push-out stripper	65
LOWER PART OPTIONS	LOWER PART	
Compensating rings:	RTC cartridge and die carrier	52
1 Set (2xt = 0,1 mm / 2xt = 0,3 mm / 2xt = 0,5 mm) - part-no. 1S3794	Keyway clamps	64
<sup>(2)</sup> Suitable for rectangle, as well as rectangle 4 x R = 0,5	Slug-snap version for slug problems (die size 2)	69
<sup>(3)</sup> Brush version for low-scratch material handling		

# SLITTING TOOL SIZE 2 / 5 X 56 - STANDARD

## INTEGRATED ADJUSTING RING, SLITTING PUNCH BLADE, DIE PLATE

DESCRIPTION	POSITION	PART-NO.
<b>COMPLETE TOOL <sup>(*)</sup></b>		
Oblong	1 - 5	1S0431110
Rectangle	1 - 5	1S0431120
Rectangle with 4 x R = 0,5	1 - 5	1S0431130
Trapezoid SF17	1 - 5	1S0431140
Double Trapezoid SF16	1 - 5	1S0431150
<b>SLITTING PUNCH BLADE HOLDER (WITHOUT PUNCH BLADE INSERT)</b>		
With integrated adjusting ring	1	1S0393
<b>SLITTING PUNCH BLADE INSERT (H-PM<sup>®</sup>) <sup>(*)</sup></b>		
Oblong	2	1S04311
Rectangle	2	1S04312
Rectangle with 4 x R = 0,5	2	1S04313
Trapezoid SF17	2	1S04314
Double Trapezoid SF16	2	1S04315
<b>STRIPPER</b>		
Oblong	3	119254
Rectangle	3	119253
Rectangle with 4 x R = 0,5	3	119253
Trapezoid SF17	3	119257
Double Trapezoid SF16	3	119256
<b>DIE PLATE (H-PM<sup>®</sup>)</b>		
Oblong	4	1S17261
Rectangle <sup>(2)</sup>	4	1S17262
Trapezoid SF17	4	1S17264
Double Trapezoid SF16	4	1S17265
<b>DIE PLATE ADAPTER (WITHOUT DIE PLATE) <sup>(3)</sup></b>		
Incl. screws	5	1S1756



### UPPER PART OPTIONS

Max. sheet thickness up to 3,00 mm

<sup>(\*)</sup> Additional costs for reduced dimensional deviation

<sup>(1)</sup> Standard version with rooftop

Set of screws M 8 x 16 (2 pc per set)

Part-no. 1S0393Z

### STRIPPER OPTIONS

PU coating for low-scratch material handling

### LOWER PART OPTIONS

Compensating rings:

1 Set (2xt = 0,1 mm / 2xt = 0,3 mm / 2xt = 0,5 mm) - part-no. 1S3794

<sup>(2)</sup> Suitable for rectangle, as well as rectangle 4 x R = 0,5

<sup>(3)</sup> Brush version for low-scratch material handling

Cross references:

see page

### UPPER PART

Slitting close to embossing 33 - 34

Additional costs for coating (slitting punch blade insert) 66

Polished cutting part (punch size 2) 67

### STRIPPER

Spare parts 64

Push-out stripper 65

### LOWER PART

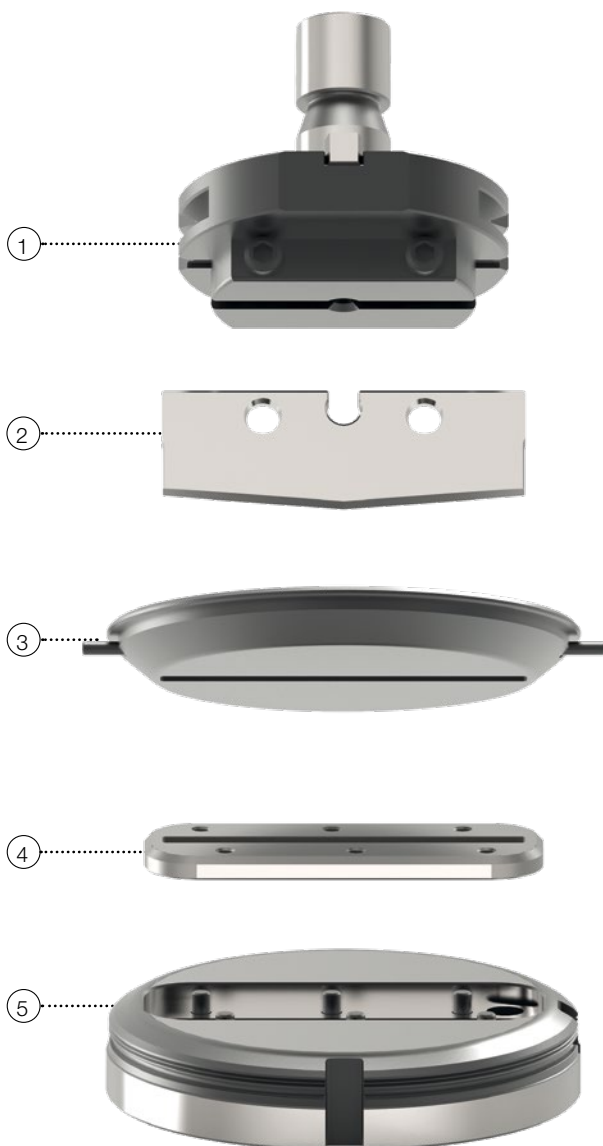
RTC cartridge and die carrier 52

Keyway clamps 64

Slug-snap version for slug problems (die size 2) 69

# SLITTING TOOL SIZE 2 / 5 X 76,2 - STANDARD

INTEGRATED ADJUSTING RING, SLITTING PUNCH BLADE, DIE PLATE



DESCRIPTION	POSITION	PART NO.
<b>COMPLETE TOOL <sup>(*)</sup></b>		
Oblong	1 - 5	1S0432110
Rectangle	1 - 5	1S0432120
Rectangle with 4 x R = 0,5	1 - 5	1S0432130
Trapezoid SF17	1 - 5	1S0432140
Double Trapezoid SF16	1 - 5	1S0432150
<b>SLITTING PUNCH BLADE HOLDER (WITHOUT PUNCH BLADE INSERT)</b>		
With integrated adjusting ring	1	1S0393
<b>SLITTING PUNCH BLADE INSERT (H-PM<sup>®</sup>) <sup>(*)</sup></b>		
Oblong	2	1S04321
Rectangle	2	1S04322
Rectangle with 4 x R = 0,5	2	1S04323
Trapezoid SF17	2	1S04324
Double Trapezoid SF16	2	1S04325
<b>STRIPPER</b>		
Oblong	3	119274
Rectangle	3	119273
Rectangle with 4 x R = 0,5	3	119273
Trapezoid SF17	3	119277
Double Trapezoid SF16	3	119276
<b>DIE PLATE (H-PM<sup>®</sup>)</b>		
Oblong	4	1S17411
Rectangle <sup>(*)</sup>	4	1S17412
Trapezoid SF17	4	1S17414
Double Trapezoid SF16	4	1S17415
<b>DIE PLATE ADAPTER (WITHOUT DIE PLATE) <sup>(*)</sup></b>		
Incl. screws	5	1S1776

Cross references: see page

UPPER PART OPTIONS	UPPER PART	
Max. sheet thickness up to 2,50 mm	Slitting close to embossing	35
<sup>(*)</sup> Additional costs for reduced dimensional deviation	Additional costs for coating (slitting punch blade insert)	66
<sup>(*)</sup> Standard version with rooftop	Polished cutting part (punch size 2)	67
Set of screws M 8 x 16 (2 pc per set)		
Part-no. 1S0393Z		

STRIPPER OPTIONS	STRIPPER	
PU coating for low-scratch material handling	Spare parts	64
	Push-out stripper	65

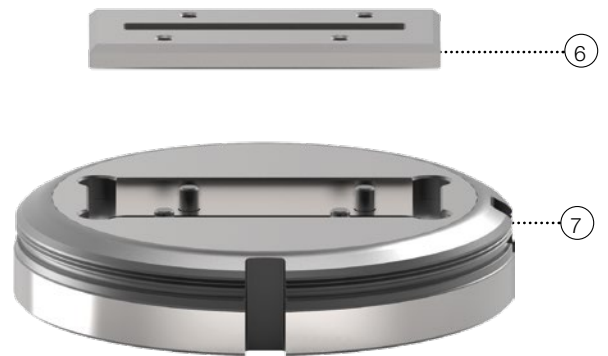
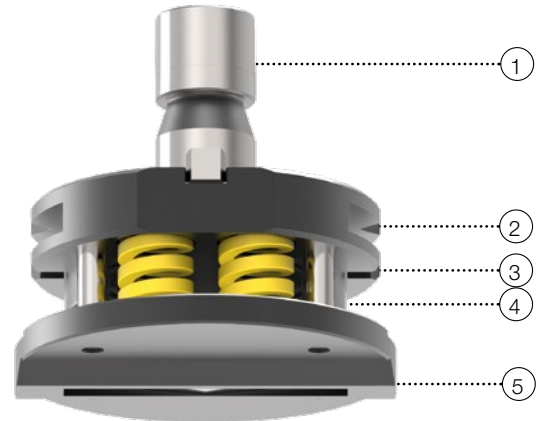
LOWER PART OPTIONS	LOWER PART	
Compensating rings:	RTC cartridge and die carrier	52
1 Set (2xt = 0,1 mm / 2xt = 0,3 mm / 2xt = 0,5 mm) - part-no. 1S3797	Keyway clamps	64
<sup>(*)</sup> Suitable for rectangle, as well as rectangle 4 x R = 0,5	Slug-snap version for slug problems (die size 2)	69
<sup>(*)</sup> Brush version for low-scratch material handling		



# SLITTING TOOL SIZE 2 / 5 X 56 - SPRING LOADED

INTEGRATED ADJUSTING RING, SLITTING PUNCH BLADE AND DIE PLATE FOR SLITTING CLOSE TO EMBOSSING UP TO H = 4,50 MM, WITH SPRING-LOADED METAL STRIPPER

DESCRIPTION	POSITION	PARTNO.
<b>COMPLETE TOOL <sup>(*)</sup></b>		
Oblong	1 - 7	1S037110
Rectangle	1 - 7	1S037120
Rectangle with 4 x R = 0,5	1 - 7	1S037130
Trapezoid SF17	1 - 7	1S037140
Double Trapezoid SF16	1 - 7	1S037150
<b>COMPLETE UPPER PART <sup>(*)</sup></b>		
Oblong	1 - 5	1S03711
Rectangle	1 - 5	1S03712
Rectangle with 4 x R = 0,5	1 - 5	1S03713
Trapezoid SF17	1 - 5	1S03714
Double Trapezoid SF16	1 - 5	1S03715
<b>SPARE PARTS FOR UPPER PART</b>		
Slitting punch blade holder	1	1S0371
Spare springs and screws	3 + 4	1S0379
Active stripper	5	1S03752C
<b>SLITTING PUNCH BLADE INSERT (H-PM<sup>®</sup>) <sup>(*)</sup></b>		
Oblong	2	1S04311
Rectangle	2	1S04312
Rectangle with 4 x R = 0,5	2	1S04313
Trapezoid SF17	2	1S04314
Double Trapezoid SF16	2	1S04315
<b>DIE PLATE (H-PM<sup>®</sup>)</b>		
Oblong	6	1S17261
Rectangle <sup>(*)</sup>	6	1S17262
Trapezoid SF17	6	1S17264
Double Trapezoid SF16	6	1S17265
<b>DIE PLATE ADAPTER (WITHOUT DIE PLATE) <sup>(*)</sup></b>		
Incl. screws	7	1S1756



Cross references: see page

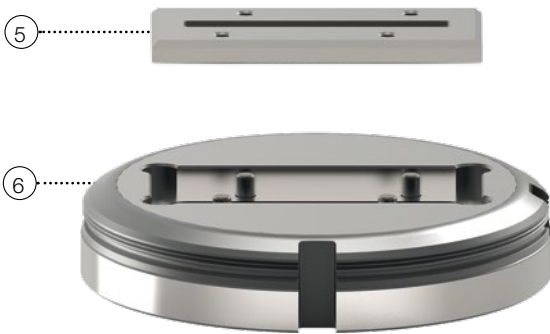
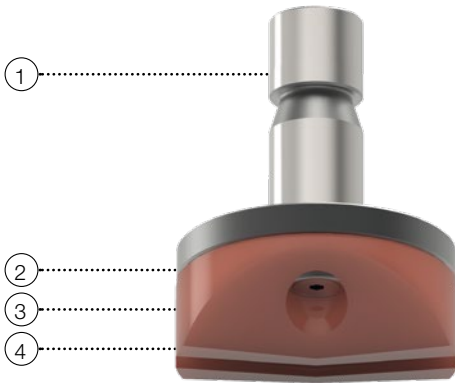
UPPER PART OPTIONS	UPPER PART	
Max. sheet thickness up to 1,50 mm	Additional costs for coating (slitting punch blade insert)	66
<sup>(*)</sup> Additional costs for reduced dimensional deviation	Polished cutting part (punch size 2)	67
<sup>(*)</sup> Standard version with rooftop		
Set of screws M 8 x 16 (2 pc per set)		
Part-no. 1S0393Z		

STRIPPER OPTIONS	STRIPPER
Polished version for low-scratch material handling	

LOWER PART OPTIONS	LOWER PART	
Compensating rings:	RTC cartridge and die carrier	52
1 Set (2xt = 0,1 mm / 2xt = 0,3 mm / 2xt = 0,5 mm) - part-no. 1S3794	Keyway clamps	64
<sup>(*)</sup> Suitable for rectangle, as well as rectangle 4 x R = 0,5	Slug-snap version for slug problems (die size 2)	69
<sup>(*)</sup> Brush version for low-scratch material handling		

# SLITTING TOOL SIZE 2 / 5 X 56 - PU

FOR SLITTING CLOSE TO EMBOSSING, WITH PU STRIPPER



DESCRIPTION	POSITION	PART-NO.
<b>COMPLETE TOOL <sup>(*)</sup></b>		
Oblong	1 - 6	1S295010
Rectangle	1 - 6	1S295020
Rectangle with 4 x R = 0,5	1 - 6	1S295030
Trapezoid SF17	1 - 6	1S295040
Double Trapezoid SF16	1 - 6	1S295050
<b>COMPLETE UPPER PART (INCL. SPRINGS, SCREWS, SOCKETS) <sup>(*)</sup></b>		
Oblong	1 - 4	1S29501
Rectangle	1 - 4	1S29502
Rectangle with 4 x R = 0,5	1 - 4	1S29503
Trapezoid SF17	1 - 4	1S29504
Double Trapezoid SF16	1 - 4	1S29505
<b>PUNCH (WITHOUT SPRINGS, SCREWS, SOCKETS) (H-PM®) <sup>(*)</sup></b>		
Oblong	1	1S29511
Rectangle	1	1S29512
Rectangle with 4 x R = 0,5	1	1S29513
Trapezoid SF17	1	1S29514
Double Trapezoid SF16	1	1S29515
<b>DIE PLATE (H-PM®)</b>		
Oblong	5	1S17261
Rectangle <sup>(2)</sup>	5	1S17262
Trapezoid SF17	5	1S17264
Double Trapezoid SF16	5	1S17265
<b>DIE PLATE ADAPTER (WITHOUT DIE PLATE) <sup>(3)</sup></b>		
Incl. screws	6	1S1756

Cross references: see page

## UPPER PART OPTIONS

Max. sheet thickness up to 3,00 mm

<sup>(\*)</sup> Additional costs for reduced dimensional deviation

<sup>(1)</sup> Standard version with rooftop

X3-PM quality

## UPPER PART

Adjusting rings	46
ps:®passfit - explanation and additional costs	51
Additional costs for coating (punch size 2)	66
Polished cutting part (punch size 2)	67

## STRIPPER OPTIONS

Set of spare PU springs - part-no. 1S2956 - pos. 4

Set of spare sockets - part-no. 1S2954 - pos. 3

Set of spare screws - part-no. 1S2950 - pos. 2

## STRIPPER

## LOWER PART OPTIONS

Compensating rings:

1 Set (2xt = 0,1 mm / 2xt = 0,3 mm / 2xt = 0,5 mm) - part-no. 1S3794

<sup>(2)</sup> Suitable for rectangle, as well as rectangle 4 x R = 0,5

<sup>(3)</sup> Brush version for low-scratch material handling

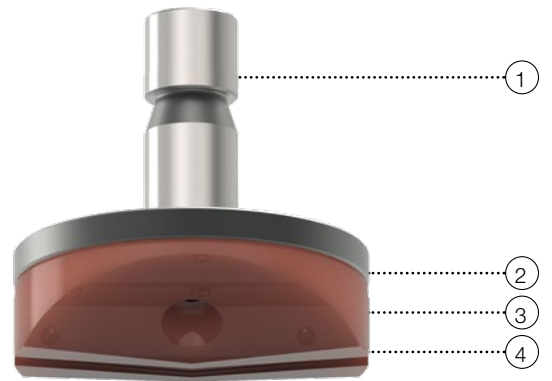
## LOWER PART

RTC cartridge and die carrier	52
Keyway clamps	64
Slug-snap version for slug problems (die size 2)	69

# SLITTING TOOL SIZE 2 / 5 X 76,2 - PU

## FOR SLITTING CLOSE TO EMBOSSING, WITH PU STRIPPER

DESCRIPTION	POSITION	PART-NO.
<b>COMPLETE TOOL <sup>(*)</sup></b>		
Oblong	1 - 6	1S297010
Rectangle	1 - 6	1S297020
Rectangle with 4 x R = 0,5	1 - 6	1S297030
Trapezoid SF17	1 - 6	1S297040
Double Trapezoid SF16	1 - 6	1S297050
<b>COMPLETE UPPER PART (INCL. SPRINGS, SCREWS, SOCKETS) <sup>(*)</sup></b>		
Oblong	1 - 4	1S29701
Rectangle	1 - 4	1S29702
Rectangle with 4 x R = 0,5	1 - 4	1S29703
Trapezoid SF17	1 - 4	1S29704
Double Trapezoid SF16	1 - 4	1S29705
<b>PUNCH (WITHOUT SPRINGS, SCREWS, SOCKETS) (H-PM<sup>®</sup>) <sup>(*)</sup></b>		
Oblong	1	1S29711
Rectangle	1	1S29712
Rectangle with 4 x R = 0,5	1	1S29713
Trapezoid SF17	1	1S29714
Double Trapezoid SF16	1	1S29715
<b>DIE PLATE (H-PM<sup>®</sup>)</b>		
Oblong	5	1S17411
Rectangle <sup>(*)</sup>	5	1S17412
Trapezoid SF17	5	1S17414
Double Trapezoid SF16	5	1S17415
<b>DIE PLATE ADAPTER (WITHOUT DIE PLATE) <sup>(*)</sup></b>		
Incl. screws	6	1S1776



Cross references: see page

### UPPER PART OPTIONS

Max. sheet thickness up to 2,50 mm

<sup>(\*)</sup> Additional costs for reduced dimensional deviation

<sup>(\*)</sup> Standard version with rooftop

X3-PM quality

### UPPER PART

Adjusting rings

ps:®passfit - explanation and additional costs

Additional costs for coating (punch size 2)

Polished cutting part (punch size 2)

46

51

66

67

### STRIPPER OPTIONS

Set of spare PU springs - part-no. 1S2955 - pos. 4

Set of spare sockets - part-no. 1S2954 - pos. 3

Set of spare screws - part-no. 1S2950 - pos. 2

### STRIPPER

### LOWER PART OPTIONS

Compensating rings:

1 Set (2xt = 0,1 mm / 2xt = 0,3 mm / 2xt = 0,5 mm) - part-no. 1S3797

<sup>(\*)</sup> Suitable for rectangle, as well as rectangle 4 x R = 0,5

<sup>(\*)</sup> Brush version for low-scratch material handling

### LOWER PART

RTC cartridge and die carrier

Keyway clamps

Slug-snap version for slug problems (die size 2)

52

64

69



# SPECIAL TOOLS

PASS EXTRA TOOLS FOR YOUR  
TRUMPF SYSTEM

## INDEX

Centre Punch Tool from Above	page 38
Centre Punch Tool from Below	page 39
ps:®signing	page 40
ps:®engraving	page 41
ps:®single-thread	page 42

# CENTRE PUNCH TOOL FROM ABOVE



DESCRIPTION	SHEET THICKNESS	POSITION	PART-NO.
<b>CENTRE PUNCH TOOL „SOLID“ - PUNCH CHUCK, CENTRE PUNCH, DIE <sup>(1)</sup></b>			
Complete tool	1,00 - 4,50*	1 - 3	1S092A
Complete tool	4,51 - 8,00	1 - 3	1S092B
<b>SPARE CENTRE PUNCH</b>			
Length 55,3 mm	1,00 - 4,50*	2	1S0921
Length 51,3 mm	4,51 - 8,00	2	1S0922
<b>SPARE DIE</b>			
Flat	1,00 - 8,00	3	1S3940

\* for machine group I up to 8,00 mm

Details:

#### ACCESSORIES

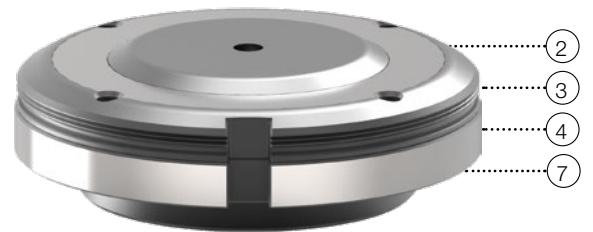
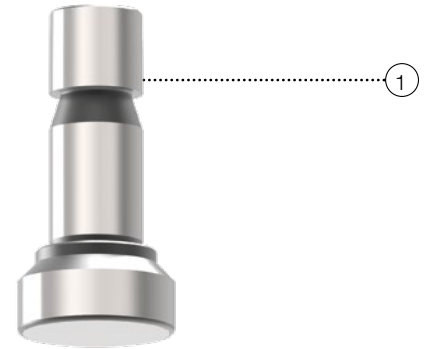
<sup>(1)</sup> Suitable adjusting ring - part-no. 118101 -> see page 46

<sup>(1)</sup> Screw with shoulder M14 x 1,5 x 12 - part-no. 1S0925

# CENTRE PUNCH TOOL FROM BELOW

DESCRIPTION	SHEET THICKNESS	POSITION	PART-NO.
<b>CENTRE PUNCH TOOL WITH STEPLESS ADJUSTABLE CENTRE MARK TEMPLATE DEPTH <sup>(*)</sup></b>			
Complete tool	1,00 - 4,00*	1 - 7	1S2800
<b>SPARE PARTS FOR CENTRE PUNCH TOOL WITH STEPLESS ADJUSTABLE DEPTH</b>			
Upper Part	1,00 - 4,00	1	1S2801
Stripper	1,00 - 4,00	2	1S2804
Centre punch	1,00 - 4,00	3	1S2805
Cushioning element	1,00 - 4,00	4	1S2806
Adjusting screw	1,00 - 4,00	7	1S2809

\* for machine group I up to 8,00 mm



Details:

## ACCESSORIES

<sup>(\*)</sup> Suitable adjusting ring - part-no. 118201 -> see page 46

# ps:® signing

FOR SHEET THICKNESSES FROM 0,80 MM UP TO 8,00 MM



DESCRIPTION	POSITION	PART-NO.
<b>COMPLETE SIGNING TOOL</b>		
Consisting of: complete upper part, incl. adjusting ring, stripper Ø 20 and flat die	1 - 7	1S390W
<b>COMPLETE SIGNING UPPER PART</b>		
Consisting of: adapter, adjusting ring, signing pin and spring	1 - 5	1S3900
<b>SPARE SIGNING PIN</b>		
Made of H-PM® steel	5	1S3930
<b>SPARE STRIPPER</b>		
Ø 20	6	112211-20
<b>SPARE DIE</b>		
Flat	7	1S3940

Details: see page

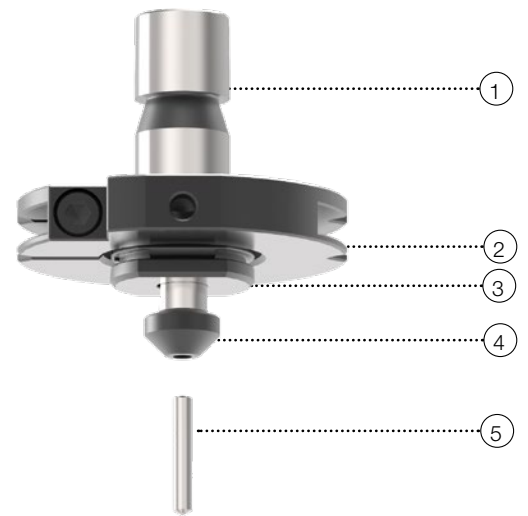
**ACCESSORIES**

Spare adjusting ring - part-no. 118101 46

Option „signing“ must be unlocked in the machine controlling



DESCRIPTION	POSITION	PART-NO.
<b>ENGRAVING TOOL INCL. DIE AND BALL CASTER</b>		
Consisting of: complete upper part, incl. 3 types of springs, adjusting ring, die and ball caster	1 - 8	199103950
<b>ENGRAVING TOOL UPPER PART</b>		
Incl. 3 types of springs	1 - 5	199103950-1
<b>SPARE ENGRAVING NEEDLE</b>		
Diamond	5	199103962
<b>SPARE DIE</b>		
Incl. Ampco plate and ball caster	6 - 8	199103950-2
<b>SPARE SPRINGS</b>		
„Green“ for aluminium		91701025A
„Blue“ for steel		91701025B
„Red“ for stainless steel		91701025C



Details: see page

**ACCESSORIES**

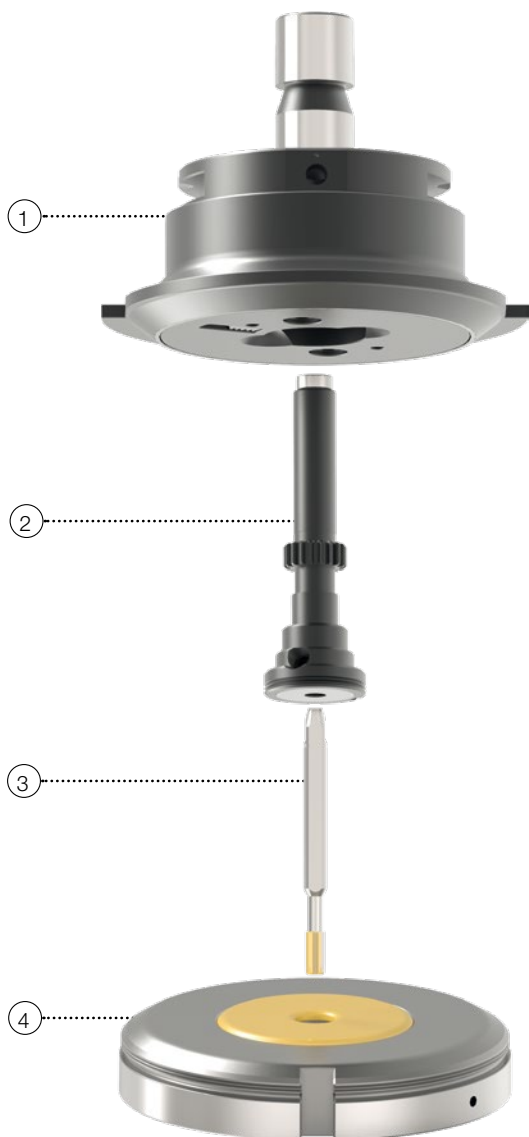
Spare adjusting ring - part-no. 118101 46

Option „engraving“ must be unlocked in the machine controlling

# ps:® single-thread

FOR MACHINE GROUP I

(TRUPUNCH1000, 2000, 2020, 3000, 5000 TRUMATIC1000, 3000, 6000, 7000)



DESCRIPTION	SIZE	POSITION	PART-NO.
<b>BASIC HOLDER (WITHOUT TAP MODULE AND TAP INSERT)</b>			
Type 1	M2,5 - M5	1	924GF1101
Type 2	M6 - M10	1	924GF2101
<b>TAP MODULE (WITHOUT TAP INSERTS)</b>			
	M2,5	2	924GF1301
	M3	2	924GF1302
	M4	2	924GF1304
	M5	2	924GF1305
	M6	2	924GF2301
	M8	2	924GF2302
	M10	2	924GF2303
<b>TAP INSERT (METRIC THREADS)</b>			
for basic holder type 1	M2,5	3	924GF1401
for basic holder type 1	M3	3	924GF1402
for basic holder type 1	M4	3	924GF1404
for basic holder type 1	M5	3	924GF1405
for basic holder type 2	M6	3	924GF2401
for basic holder type 2	M8	3	924GF2402
for basic holder type 2	M10	3	924GF2403
<b>DIE</b>			
Type A <sup>(1)</sup>	M2,5 - M10	4	924GF2201
Type B <sup>(2)</sup>	M2,5 - M8	4	924GF2211

<sup>(1)</sup> for flat sheets and extrusions upwards

<sup>(2)</sup> for extrusions up- and downwards

Details:

## INFORMATION

One complete tool always includes:  
„Basic holder; tap module; tap insert and die“

Suitable for max. sheet thickness  $s = 1,00$  mm up to 8,00 mm  
Other thread sizes and versions (e.g. thread measured in inches) on request

Please note that tapping tools are exclusively used in machines with programming option „Thread Forming“

Cross references:

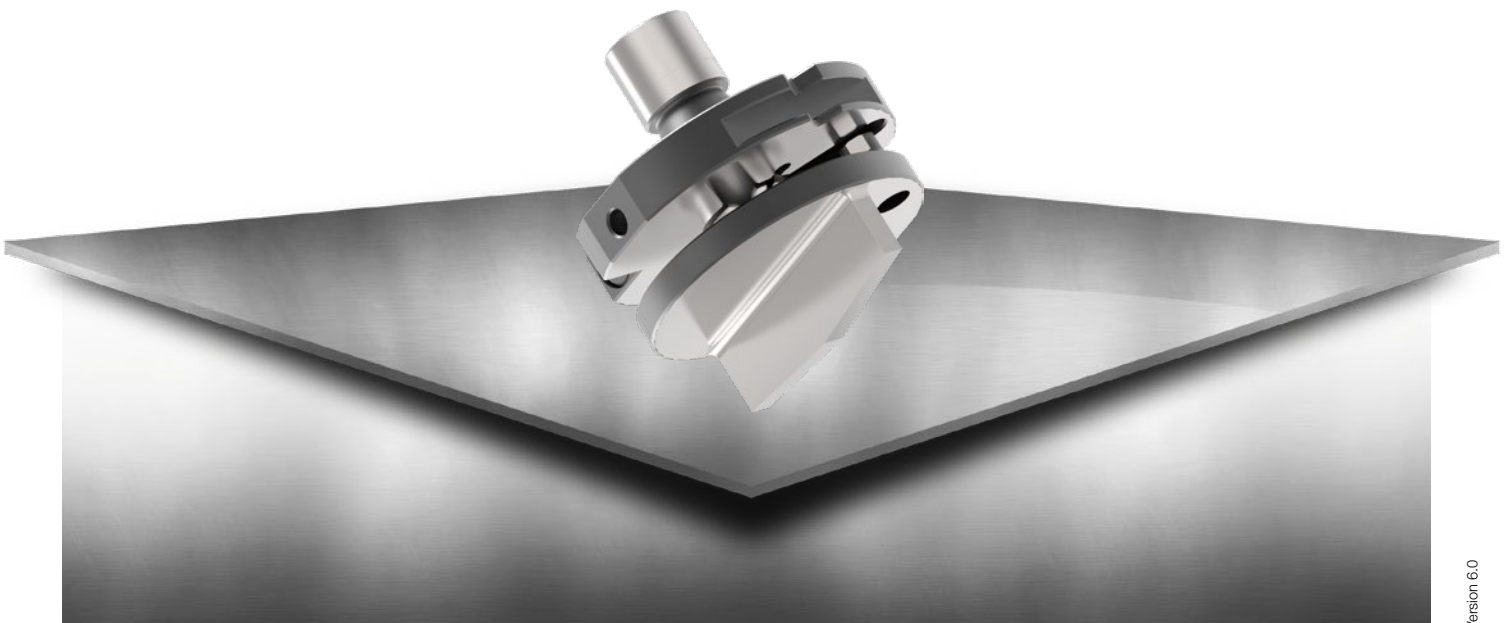
## ACCESSORIES

RTC cartridge and die carrier

see page

52

A large grid of graph paper for taking notes, consisting of 20 columns and 40 rows of small squares.



# IT DEPENDS ON: ACCESSORIES

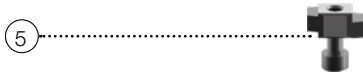
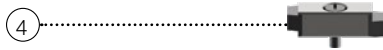
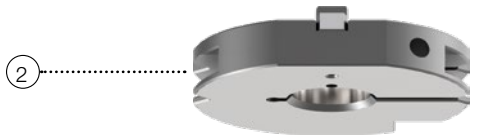
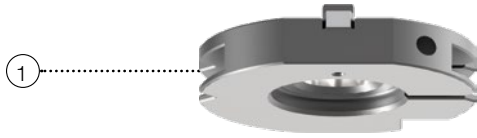
PASS ACCESSORIES FOR YOUR  
TRUMPF SYSTEM

## INDEX

Adjusting rings	page 46
Punch Chucks, Adapter Rings	page 47
Adjustment Unit for Punch	page 48
Shims for Dies	page 49
Soft pads	page 50
ps:®passfit	page 51
ps:®3D-RTC - cartridge plastic size 2	page 52
ps:®3D-RTC - cartridge plastic size 5	page 53

# ADJUSTING RINGS

(FOR MACHINE GROUPS E / F / H / I)



SIZE	POSITION	PART-NO.
<b>AUTOMATIC ADJUSTING RINGS INCL. KEY</b>		
Size 1 with cut-out	1	118101
Size 2 without cut-out	2	118201

<b>ADJUSTING RING INCL. KEY FOR REINFORCED VERSION PUNCHES FORM</b>		
Reinforced	3	118V01

<b>SPARE PARTS</b>		
Key with screws for automatic adjusting rings	4	118902
Key with screws for reinforced adjusting rings	5	118903

Cross references: see page

**PUNCH**

Punch size 1 and 2 6 - 13

**ACCESSORIES**

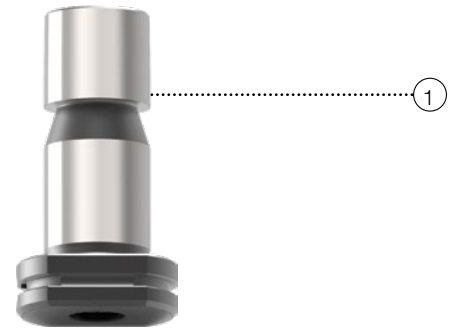
ps:®passfit - explanation and additional costs 51

Spare parts 64

# PUNCH CHUCKS, ADAPTER RINGS

(FOR MACHINE GROUPS E / F / H / I)

SIZE	POSITION	PART-NO.
<b>PUNCH CHUCK</b>		
0 (up to 6,00 mm)	1	119A01
0 (up to 10,50 mm)	1	119B01
<b>ADAPTER RING FOR DIE</b>		
2 / 1	2	120210
<b>ADAPTER RING WITH BRUSHES</b>		
2 / 1	3	1S1820



## Spare parts:

### SPARE PARTS FOR ADAPTER RING WITH BRUSHES

Spare brush for adapter ring - part-no. 1S1822 - pos. 4

Set of shims (6xt = 0,5 mm) - part-no. 1S1823 - pos. 5

## Cross references:

see page

### PUNCH

Punch size 0

6 - 13

### DIE

Die size 1

6 - 15

### ACCESSORIES

Spare parts

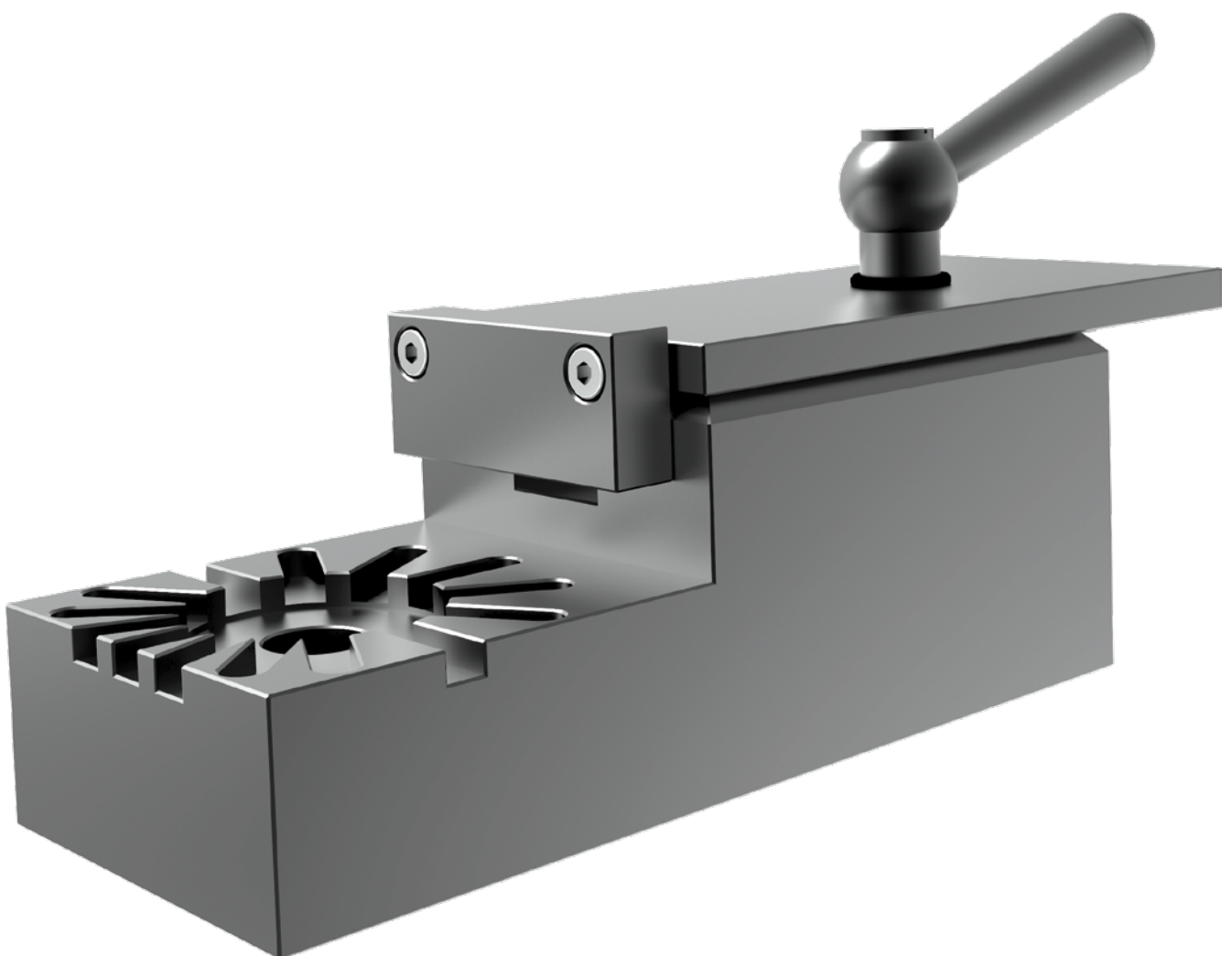
64

# ADJUSTMENT UNIT FOR PUNCH

PART-NO.

POSSIBLE ANGLES: 0° - 22,5° - 30° - 45° - 60° - 67,5° - 90°

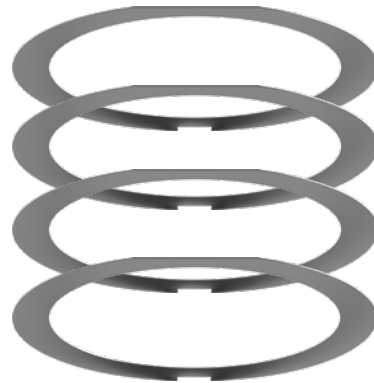
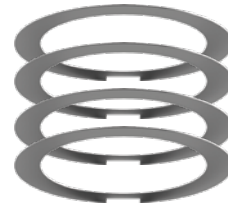
Z497673





# SHIMS FOR DIES

SIZE	RANGE	PART-NO.
<b>SET OF SHIMS FOR DIE SIZE 1</b>		
1	4 x t = 0,1 mm	11AS01
1	4 x t = 0,3 mm	11AS03
1	4 x t = 0,5 mm	11AS05
1	2 x t = 0,1 / 1 x t = 0,3 / 1 x t = 0,5 mm	11AS0_
<b>SET OF SHIMS FOR DIE SIZE 2</b>		
2	4 x t = 0,1 mm	12AS01
2	4 x t = 0,3 mm	12AS03
2	4 x t = 0,5 mm	12AS05
2	2 x t = 0,1 / 1 x t = 0,3 / 1 x t = 0,5 mm	12AS0_



Details: see page

## ACCESSORIES

Adapter rings for die	47
RTC cartridge and die carrier	52

# SOFT PADS



SIZE	RANGE	POSITION	PART-NO.
<b>SOFT PADS FOR STRIPPER</b>			
2	Inside-Ø 16	1	PAD2A16
2	Inside-Ø 25	1	PAD2A25
2	Inside-Ø 50	1	PAD2A50
2	Inside-Ø 76	1	PAD2A76

<b>SOFT PADS FOR DIE</b>			
2	General	2	PAD2MAN
2	Square	3	PAD2MQN
2	Rectangle / oblong	4	PAD2MFN

<b>SOFT PADS FOR ADAPTER RING</b>			
2 to 1		5	PAD2ZAN

FOR FAST AND EASY ADJUSTMENT WITHOUT THE NEED FOR A FIXTURE

DESCRIPTION	MACHINE GROUP	PART-NO.
ps:®passfit ADJUSTING RING INCL. KEY FOR PUNCH SIZE 1		
Size 1	E-I	1181P1

ps:®passfit ADJUSTING RING INCL. KEY FOR PUNCH SIZE 2		
Size 2	E-I	1182P1

ps:®passfit ADJUSTING RING INCL. KEY FOR PUNCH REINFORCED VERSION		
Reinforced	E-I	118VP1

DESCRIPTION	LOCATION	PART-NO.
ps:®passfit FOR PUNCH SIZE 1		
First keyway	0°	__P1
Each additional keyway		

ps:®passfit FOR PUNCH SIZE 2 AND SIZE 3		
First alignment hole & pin	0 - 90°	__P2
Each additional alignment hole		

ps:®passfit PUNCH REINFORCED FORM		
First keyway	0°	__P1
Each additional keyway		



Details:

INFORMATION ABOUT ps:®passfit

- Form-fitting anti-rotation-lock
- High operational security of the machine
- Solid tool, as the approved standard punches serve as basic tool
- Profile debilitation develops at the tension shaft
- High precision mating with punch; does not add to tool length
- Keyway positions on customer request
- Also reasonable for special tools
- All PASS cluster tools are generally equipped with ps:®passfit

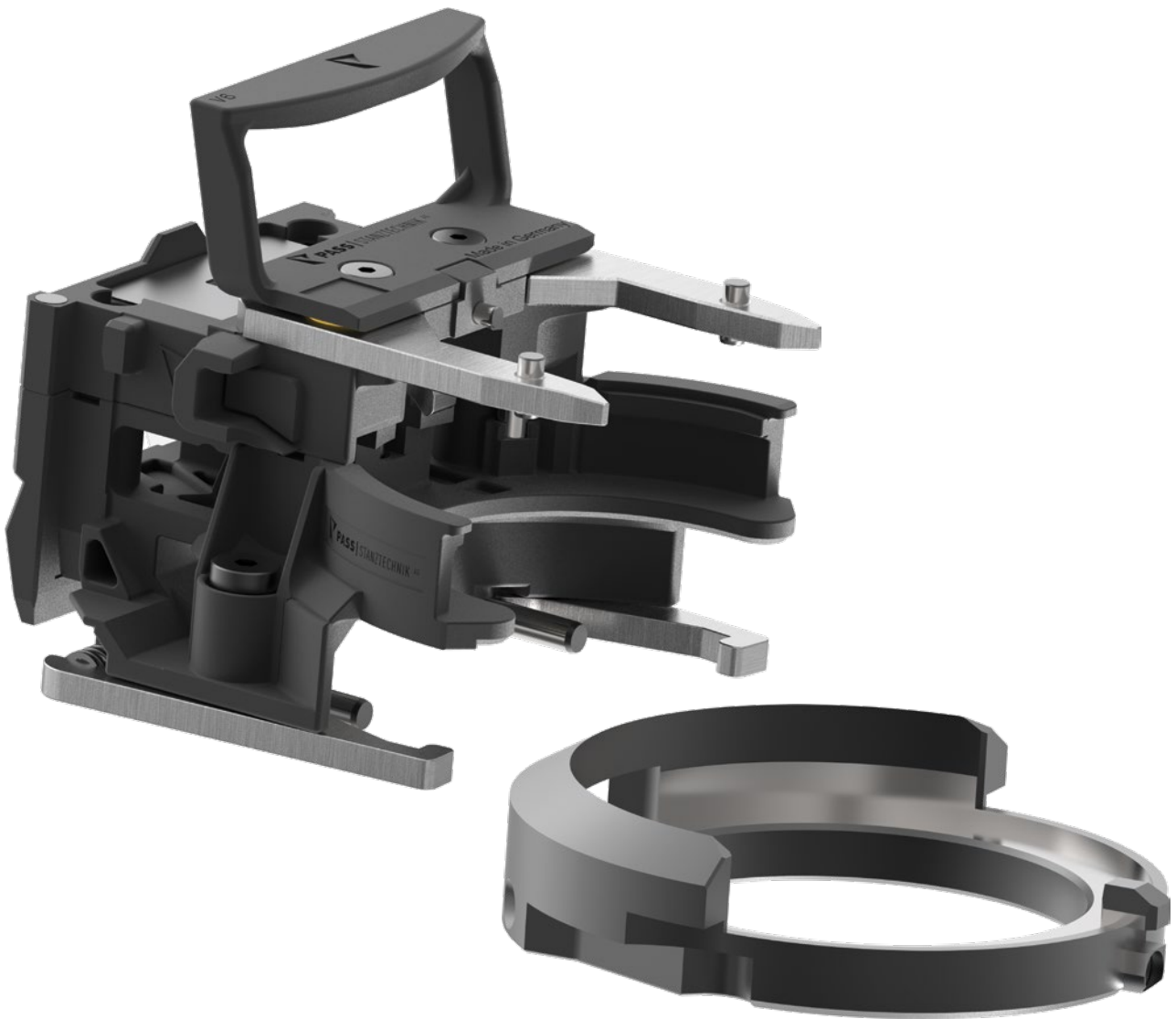
SPARE PARTS

- Adjusting key for ps:®passfit - adjusting ring size 1 and 2 - part-no. 118902
- Adjusting key for ps:®passfit - adjusting ring reinforced form - part-no. 118903

# ps:®3D-RTC - CARTRIDGE PLASTIC SIZE 2

TOOLING CARTRIDGE FOR MACHINE TYPE TRUMPF

DESCRIPTION	POSITION	PART-NO.
ps:®3D-RTC CARTRIDGE PLASTIC SIZE 2		
Cartridge without die carrier		15201R1
Die carrier		960100020



# ps:®3D-RTC - CARTRIDGE PLASTIC SIZE 5

TOOLING CARTRIDGE FOR MACHINE TYPE TRUMPF

DESCRIPTION

POSITION

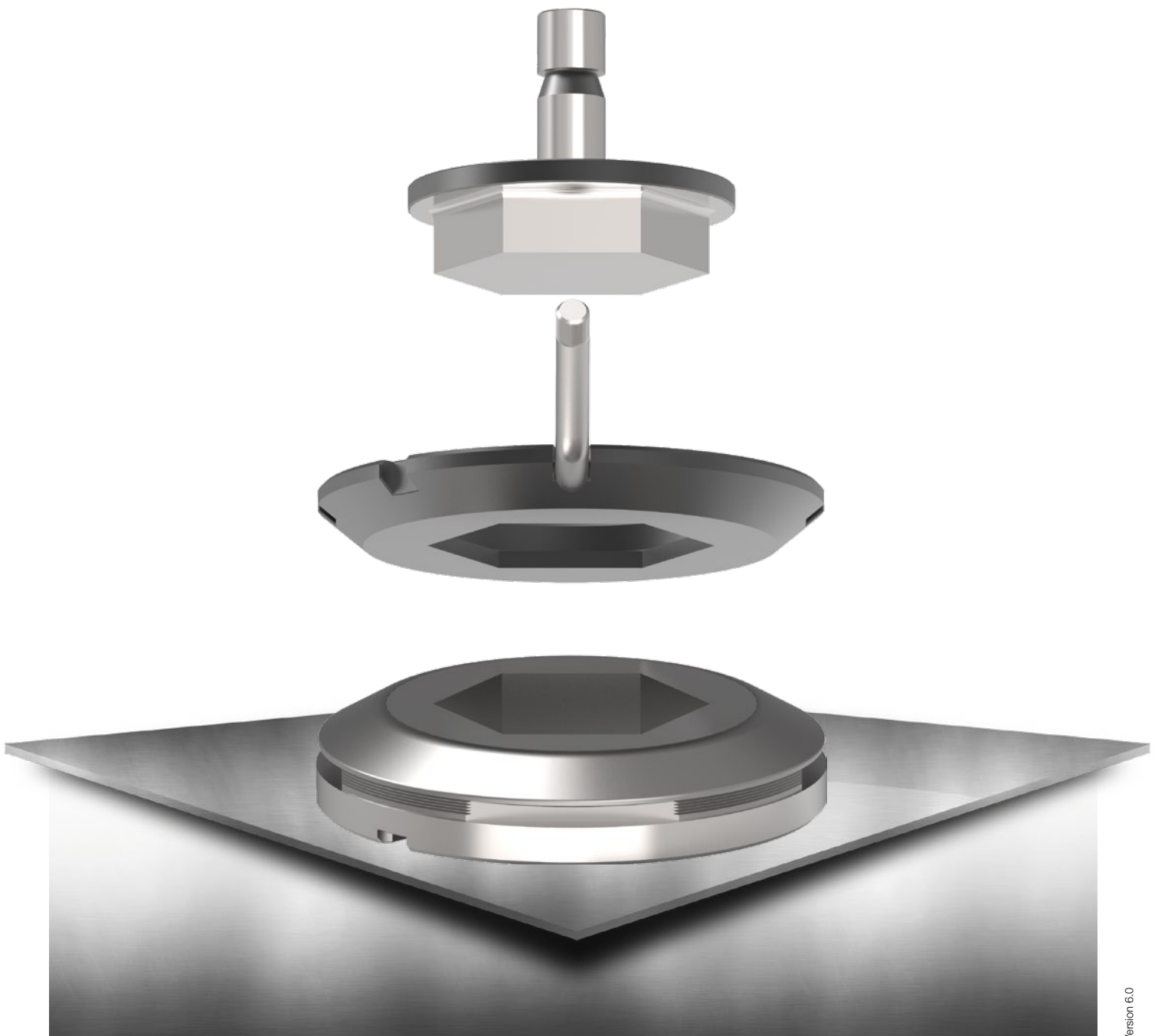
PART-NO.

ps:®3D-RTC CARTRIDGE PLASTIC SIZE 5

Cartridge

155R311





# YOU NEED IT BIG SIZE?

## PASS TOOLS SIZE 3 AND SPECIFIC TOOLING FOR BOSCHERT PUNCHING MACHINES

### INDEX

Punching Tools (Standard) size 3	page 56
Punching Tools (Form) size 3	page 57
Adapter and Manual Adjusting Rings	page 58
Slitting Tool size 2	page 59
Slitting Tool size 3	page 60
PU stripper	page 61

# PUNCHING TOOLS (STANDARD) SIZE 3



DESCRIPTION	DIM. D	PART-NO.
<b>ROUND</b>		
Punch (H-PM®)	76,21 - 105,00 mm	101311C
Die	77,01 - 107,00 mm	106311C
Manual stripper	78,01 - 107,00 mm	111311C
<b>SQUARE</b>		
Punch (H-PM®)	53,91 - 74,25 mm	101312C
Die	54,91 - 75,50 mm	106312C
Manual stripper	56,01 - 77,00 mm	111312C
<b>RECTANGLE</b>		
Punch (H-PM®)	76,21 - 105,00 mm	101313C
Die	77,01 - 107,00 mm	106313C
Manual stripper	78,01 - 107,00 mm	111313C
<b>OBLONG</b>		
Punch (H-PM®)	76,21 - 105,00 mm	101314C
Die	77,01 - 107,00 mm	106314C
Manual stripper	78,01 - 107,00 mm	111314C

PUNCH OPTIONS	Cross references:	see page
Punches with shear (WT / DOWT / etc.) -> see page 68	<b>PUNCH</b>	
Cutting part under 1,00 mm	ps:®passfit - explanation and additional costs	51
4 x corner radius	Additional costs for coating	66
X3-PM quality	Polished cutting part	67
	Adjusting rings	58
<b>STRIPPER OPTIONS</b>	<b>STRIPPER</b>	
Polished version for low-scratch material handling	Spare parts	64
	PU stripper	61
<b>DIE OPTIONS</b>	<b>DIE</b>	
Slug-stop version (negative cutting)	Slug-snap version (for slug problems) - price on request	69
Additional keyway	Adapter rings	58
Brush version for low-scratch material handling		
X8-PM quality		



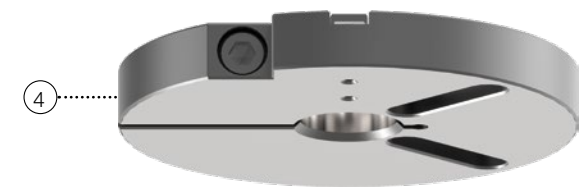
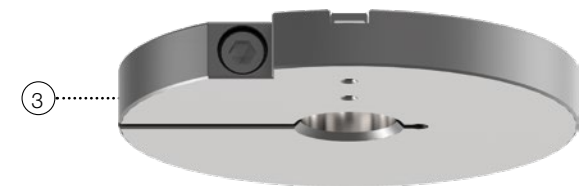
# PUNCHING TOOLS (FORM) SIZE 3

DESCRIPTION	DIM. D	PART-NO.
<b>SPECIAL SHAPE TOOLS GROUP 1 (SF01, SF02, SF04, SF05)</b>		
Punch (H-PM®)	76,21 - 105,00 mm	12131_C1
Die	77,01 - 107,00 mm	12631_C1
Manual stripper	78,01 - 107,00 mm	1273D_C1
<b>SPECIAL SHAPE TOOLS GROUP 2 (SF03, SF07, SF13, SF17)</b>		
Punch (H-PM®)	76,21 - 105,00 mm	12131_C2
Die	77,01 - 107,00 mm	12631_C2
Manual stripper	78,01 - 107,00 mm	1273D_C2
<b>SPECIAL SHAPE TOOLS GROUP 3 (SF06, SF08, SF14, SF16)</b>		
Punch (H-PM®)	76,21 - 105,00 mm	12131_C3
Die	77,01 - 107,00 mm	12631_C3
Manual stripper	78,01 - 107,00 mm	1273D_C3
<b>SPECIAL SHAPE TOOLS GROUP 4 (SF09, SF10, SF11, SF12, SF15)</b>		
Punch (H-PM®)	76,21 - 105,00 mm	12131_C4
Die	77,01 - 107,00 mm	12631_C4
Manual stripper	78,01 - 107,00 mm	1273D_C4



	Cross references:	see page
<b>PUNCH OPTIONS</b>	<b>PUNCH</b>	
Punches with shear (WT / DOWT / etc.) -> see page 6866	Types of special shapes	10 - 13
Cutting part under 1,00 mm	ps:®passfit - explanation and additional costs	51
X3-PM quality	Additional costs for coating	66
	Polished cutting part	67
	Adjusting rings	46 + 58
<b>STRIPPER OPTIONS</b>	<b>STRIPPER</b>	
Polished version for low-scratch material handling	Spare parts	64
	PU stripper	61
<b>DIE OPTIONS</b>	<b>DIE</b>	
Slug-stop version (negative cutting)	Slug-snap version (for slug problems) - price on request	69
Additional keyway	Adapter rings	58
Brush version for low-scratch material handling		
X8-PM quality		

# ADAPTER AND MANUAL ADJUSTING RINGS



DESCRIPTION	MACHINE GROUP	POSITION	PART-NO.
<b>ADAPTER RING FOR STRIPPER</b>			
From 3 to 2	C - D	1	120326

<b>ADAPTER RING FOR DIE</b>			
From 3 to 1	C - D	2*	120310
From 3 to 2	C - D	2	120320

<b>ADJUSTING RINGS (MANUAL)</b>			
1	A - D	3*	118102
2	A - D	3*	118202
3 (outside Ø 95 mm)	A - D	3	118302

<b>ps:®passfit ADJUSTING RINGS (MANUAL)</b>			
1	A - D	4*	1181P2
2	A - D	4*	1182P2
3 (outside Ø 95 mm)	A - D	4	1183P2

\* no picture

# SLITTING TOOL SIZE 2 FOR BOSCHERT PUNCHING MACHINES

DESCRIPTION	POSITION	PART-NO.
<b>SPRING LOADED SLITTING TOOL SIZE 2 - MEASURE 5 X 30 - 4 X R=0,5 <sup>(1)</sup></b>		
Upper part - complete	1 - 4	1S0330530
Spare slitting punch blade insert <sup>(2)</sup> (H-PM <sup>®</sup> )	2	1S0440
Spare stripper 6 x 57	4	1S0333
Die cl 0,1 - cl 0,3	5	106T530__
Die cl 0,4 - cl 1,0	5	109T530__
<b>SPRING LOADED SLITTING TOOL SIZE 2 - MEASURE 5 X 40 - 4 X R=0,5 <sup>(1)</sup></b>		
Upper part - complete	1 - 4	1S0330540
Spare slitting punch blade insert <sup>(2)</sup> (H-PM <sup>®</sup> )	2	1S0441
Spare stripper 6 x 57	4	1S0333
Die cl 0,1 - cl 0,3	5	106T540__
Die cl 0,4 - cl 1,0	5	109T540__
<b>SPRING LOADED SLITTING TOOL SIZE 2 - MEASURE 5 X 56 - 4 X R=0,5 <sup>(1)</sup></b>		
Upper part - complete	1 - 4	1S0330556
Spare slitting punch blade insert <sup>(2)</sup> (H-PM <sup>®</sup> )	2	1S0442
Spare stripper 6 x 57	4	1S0333
Die cl 0,1 - cl 0,3	5	106T556__
Die cl 0,4 - cl 1,0	5	109T556__
<b>OTHER SPARE PARTS</b>		
Spare springs		
Set of steel springs (2 x big / 2 x small)	3	1S0331



Details / options:

<sup>(1)</sup> For slitting: Aluminium up to s = 4,00 mm,  
steel up to s = 4,00 mm, stainless steel up to s = 2,5 mm

<sup>(2)</sup> Slitting punch blade insert general with PASS T-MAX coating

<sup>(2)</sup> Additional costs for reduced dimensional deviation

# SLITTING TOOL SIZE 3

## FOR BOSCHERT PUNCHING MACHINES



DESCRIPTION	POSITION	PART-NO.
<b>SPRING LOADED SLITTING TOOL SIZE 3 - MEASURE 8 X 30 - 4 X R = 1,00 <sup>(1)</sup></b>		
Upper part - complete	1 - 4	1S0350830
Spare slitting punch blade insert <sup>(2)</sup> (H-PM <sup>®</sup> )	2	1S0446
Spare stripper	4	1S0355830
Die cl 0,3 - cl 1,0	5	109T830__
Die cl 1,2 - cl 1,5	5	109T830__
<b>SPRING LOADED SLITTING TOOL SIZE 3 - MEASURE 8 X 40 - 4 X R = 1,00 <sup>(1)</sup></b>		
Upper part - complete	1 - 4	1S0350840
Spare slitting punch blade insert <sup>(2)</sup> (H-PM <sup>®</sup> )	2	1S0447
Spare stripper	4	1S0355840
Die cl 0,3	5	106T840__
Die cl 0,4 - cl 1,2	5	109T840__
<b>SPRING LOADED SLITTING TOOL SIZE 3 - MEASURE 8 X 56 - 4 X R = 1,00 <sup>(1)</sup></b>		
Upper part - complete	1 - 4	1S0350856
Spare slitting punch blade insert <sup>(2)</sup> (H-PM <sup>®</sup> )	2	1S0448
Spare stripper	4	1S0355856
Die cl 0,3	5	106T856__
Die cl 0,4 - cl 1,0	5	109T856__
<b>OTHER SPARE PARTS</b>		
Spare springs		
Set of steel springs (4 x big / 4 x small)	3	1S03558X1

Details / options:

<sup>(1)</sup> For slitting: Aluminium up to s = 6,00 mm, steel up to s = 6,00 mm, stainless steel up to s = 3,00 mm

<sup>(2)</sup> Slitting punch blade insert general with PASS T-MAX coating

<sup>(2)</sup> Additional costs for reduced dimensional deviation

# PU STRIPPER

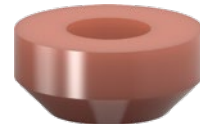
SPRING TYPE	PUNCH SHAPE <sup>(*)</sup>	RANGE	PART-NO.
<b>WITHOUT SHAPE</b>			
1	Flat size 1	- 12,00 mm	1S013810
1	Whisper size 1	- 12,00 mm	1S013820
2	Flat size 1	- 30,50 mm	1S013830
2	Whisper size 1	- 30,50 mm	1S013840
3	Flat size 2	- 48,00 mm	1S013850
3	Whisper size 2	- 48,00 mm	1S013860
	Flat / Whisper size 2	> 48,00 mm	on request

**SPRING TYPE 1**



<b>FOR ROUND PUNCHES</b>			
1	Flat size 1	- 12,00 mm	1S013811
1	Whisper size 1	- 12,00 mm	1S013821
2	Flat size 1	- 30,50 mm	1S013831
2	Whisper size 1	- 30,50 mm	1S013841
3	Flat size 2	- 48,00 mm	1S013851
3	Whisper size 2	- 48,00 mm	1S013861
	Flat / Whisper size 2	> 48,00 mm	on request

**SPRING TYPE 2**



<b>FOR FORM PUNCHES</b>			
1	Flat size 1	- 12,00 mm	1S013812
1	Whisper size 1	- 12,00 mm	1S013822
2	Flat size 1	- 30,50 mm	1S013832
2	Whisper size 1	- 30,50 mm	1S013842
3	Flat size 2	- 48,00 mm	1S013852
3	Whisper size 2	- 48,00 mm	1S013862
	Flat / Whisper size 2	> 48,00 mm	on request

**SPRING TYPE 3**

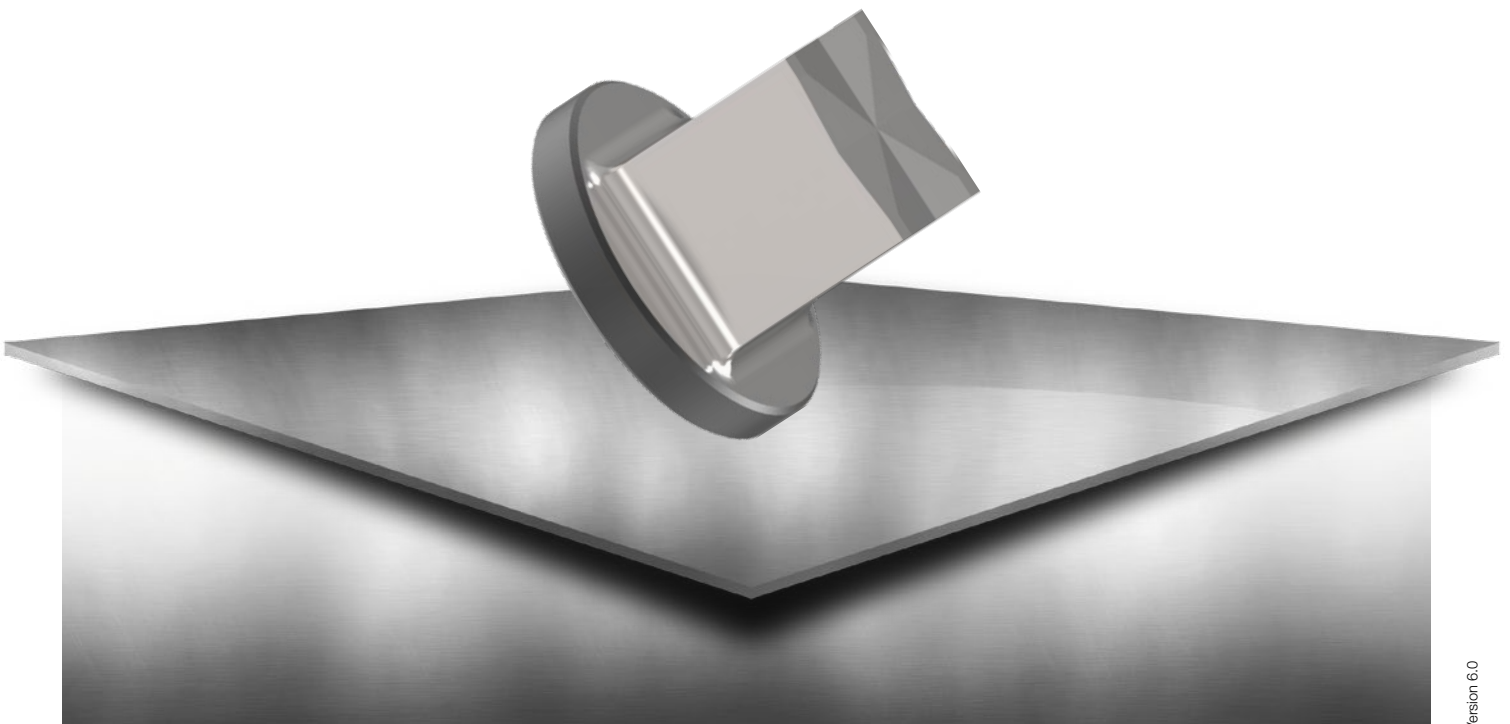


Details:

**PUNCH SECTION**

<sup>(\*)</sup> Flat = length 74,00 mm

<sup>(\*)</sup> Whisper = length 77,00 mm



# WORKING EFFECTIVELY: EXTRA EQUIPMENT

PASS EXTRA EQUIPMENT FOR YOUR  
TRUMPF SYSTEM

## INDEX

Spare parts	page 64
Push-out stripper	page 65
Punch coatings	page 66
Draw-polishing	page 67
Punches with different shear types	page 68
slug-snap for dies	page 69

# SPARE PARTS

DESCRIPTION	PART-NO.
<b>SCREW</b>	
M5 x 10 for punch chuck Ø 6,00 mm	905006
M6 x 6 for punch chuck Ø 10,50 mm	905019
M8 x 16 for adapter rings size 2/1	905009
M8 x 12 with pins for adapter rings size 3/1 - 3/2	905008
M14 x 1,5 x 12 for punch chuck	119991
<b>PINS</b>	
Ø 8 x 16 for adapter ring size 2/1	1-901013
Ø 8 x 16 for adapter ring size 3/1 - 3/2	2-901013
Ø 3 x 12 for stripper 5-station Multitool	115A30-2
Ø 3 x 12 for stripper 10-station Multitool	115A40-2
<b>ps.®passfit</b>	
Pin Ø 3 x 10 for adjusting ring size 1	901003
Adjusting key for punch size 2 + 3	118900006
<b>SLITTING PUNCH BLADE INSERT AND DIE PLATE</b>	
Pin Ø 6 x 16 for slitting punch blade holder	901012
Set of spare screws for die plate holder M4 x 12 - 6 pieces	1-907005
Set of spare screws for die plate holder M4 x 12 - 4 pieces	2-907005
<b>MISCELLANEOUS</b>	
Die clip for die	106991
Screw M6 x 25 for adjusting ring size 1 + 2	907013
Screw M3 x 8 for adjusting key	907062
Handle for stripper adapter ring „manual“ size 3/2	120326-2



# PUSH-OUT STRIPPER

## FOR MACHINE GROUPS H / I

DESCRIPTION	POSITION	PART-NO.
<b>PUSH-OUT STRIPPER</b>		
Round	1 - 4	1S21201
Square	1 - 4	1S21202
Rectangle	1 - 4	1S21203
Oblong	1 - 4	1S21204
Special shape	1 - 4	1S21200
<b>SPARE PARTS</b>		
Spare screws (4 per set)	2	1S21291
Spare springs (4 per set)	3	1S21292



Cross references: see page

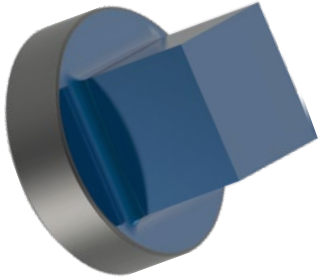
### STRIPPER OPTIONS

Polished version for low-scratch material handling	Standard tools	6 - 13
	Sitting tools	30 - 32
	Spare parts	64

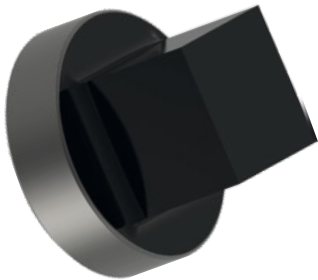
# PUNCH COATINGS

ADVANTAGE ADVANTAGE: INCREASES TOOL LIFETIME, REDUCES MATERIAL BUILD UP

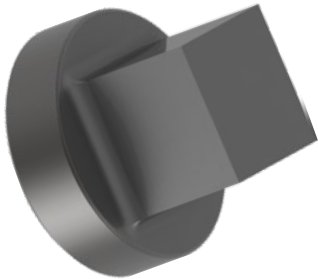
TICN



T-MAX



A-MAX



SIZE	RANGE
<b>TICN COATING (WORKING WITH STAINLESS STEEL) <sup>(*)</sup></b>	
0	- 10,50 mm
1	- 30,50 mm
2	- 76,20 mm
3	- 105,00 mm
Multitool	- 16,00 mm
Slitting punch blade insert	- 60,00 mm
Slitting punch blade insert	- 80,00 mm
<b>T-MAX COATING (WORKING WITH GALVANISED SHEET / ZINCOR) <sup>(*)</sup></b>	
0	- 10,50 mm
1	- 30,50 mm
2	- 76,20 mm
3	- 105,00 mm
Multitool	- 16,00 mm
Slitting punch blade insert	- 60,00 mm
Slitting punch blade insert	- 80,00 mm
<b>A-MAX COATING (WORKING WITH ALUMINIUM) <sup>(*)</sup></b>	
0	- 10,50 mm
1	- 30,50 mm
2	- 76,20 mm
3	- 105,00 mm
Multitool	- 16,00 mm
Slitting punch blade insert	- 60,00 mm
Slitting punch blade insert	- 80,00 mm

Details:

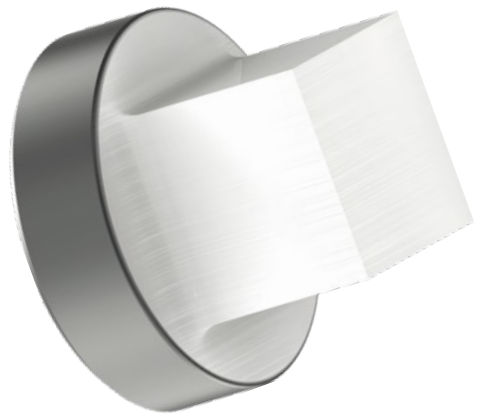
<sup>(\*)</sup> Suitable for cutting part sizes from Ø 4,00 mm or wide bases of 2,50 mm

# DRAW-POLISHING

## PUNCH EDGES

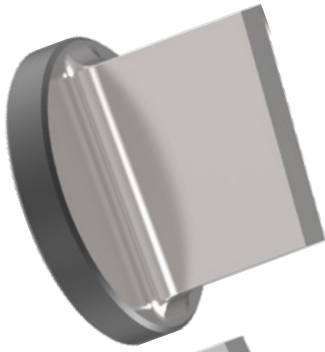
INCREASES TOOL LIFETIME, REDUCES MATERIAL BUILD UP

SIZE	RANGE
<b>ROUND</b>	
0	- 10,50 mm
1	- 30,50 mm
2	- 76,20 mm
3	- 105,00 mm
Multitool	- 16,00 mm
<b>SQUARE / RECTANGLE / OBLONG</b>	
0	- 10,50 mm
1	- 30,50 mm
2	- 76,20 mm
3	- 105,00 mm
Multitool	- 16,00 mm
<b>O.D. GROUND SPECIAL SHAPES (SPECIAL SHAPE GROUP 1 &amp; 2)</b>	
0	- 10,50 mm
1	- 30,50 mm
2	- 76,20 mm
3	- 105,00 mm
Multitool	- 16,00 mm
<b>EDM REQUIRED SPECIAL SHAPES (SPECIAL SHAPE GROUP 3 &amp; 4)</b>	
0	- 10,50 mm
1	- 30,50 mm
2	- 76,20 mm
3	- 105,00 mm
Multitool	- 16,00 mm

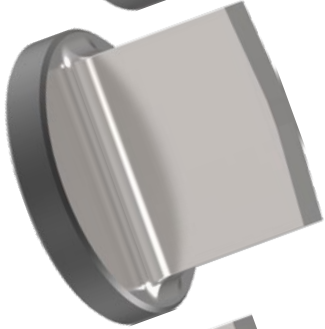


# PUNCHES WITH DIFFERENT SHEAR TYPES

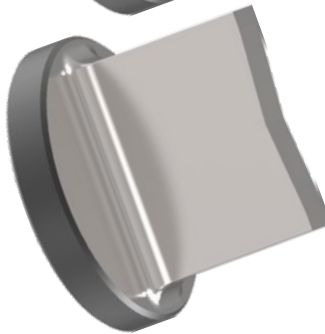
WT



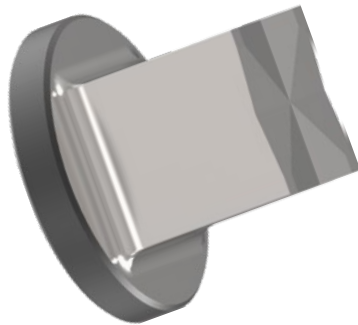
DOWT



2 PT



4 PT



DESCRIPTION

SHEAR TYPES	
	WT-shear (whisper shear)
	DOWT-shear (rooftop shear)
	2 PT-shear (inverted rooftop shear)
	4 PT-shear (inverted cross shear)

# SLUG-SNAP FOR DIES

SIZE	RANGE
<b>FOR DIES ROUND</b>	
1	- 32,00 mm
2	- 77,00 mm
1 reinforced form	- 32,00 mm
2 reinforced form	- 62,00 mm
Multitool	- 16,00 mm
<b>FOR DIE FORM</b>	
1	- 32,00 mm
2	- 77,00 mm
1 reinforced form	- 32,00 mm
2 reinforced form	- 62,00 mm
Multitool	- 16,00 mm



**SLUG-SNAP**

Details:

slug-snap

Special holding bolts are included in the die, clamping the slug positively (better than the slug-stop version, negative cutting part)

# NOTES

A large grid of graph paper for taking notes, consisting of 20 columns and 40 rows of small squares.

<b>A</b>		<b>P</b>	
Accessories ..... 45		Polishing ..... 67	5 x 56 ..... 31, 33, 34
Adapter rings ..... 47, 58		ps:®3D-RTC ..... 53	5 x 76,2 ..... 32, 35
Adjusting rings ..... 46		ps:®easy-type ..... 20	ps:®T8-shear ..... 28
Adjusting rings (manual) ..... 58		ps:®engraving ..... 41	ps:®T8-trim ..... 29
Adjustment ..... 51		ps:®MT5 for punching ..... 18	slug-snap for dies ..... 69
Adjustment unit ..... 48		ps:®MT10 cutting die ..... 24	Soft pads ..... 50
A-MAX coating ..... 66		ps:®MT10 for embossing ..... 21	Spare parts ..... 64
		ps:®MT10 for punching ..... 19	Special shape
<b>C</b>		ps:®passfit ..... 51	Standard ..... 10, 11, 12, 13
Centre punch tool ..... 38, 39		ps:®signing ..... 40	Specific tooling for Boschert ..... 55
Coating ..... 66		ps:®single-thread ..... 42	Standard tools
Compensating rings ..... 49		Punch chuck ..... 47	Oblong ..... 9
Cutting part, guided ..... 14, 15		Punch edges ..... 67	Rectangle ..... 8
		Punches with different shear types ..... 68	Round ..... 6
<b>D</b>		Punching Tools ..... 5, 56, 57	Square ..... 7
Die plate ..... 28, 29, 30, 31, 32, 33		Push-out stripper ..... 65	
Draw-polishing ..... 67		PU stripper ..... 61	<b>T</b>
			TICN coating ..... 66
<b>E</b>		<b>R</b>	T-MAX coating ..... 66
Extra equipment ..... 63		Round punch ..... 14	Tooling cassettes ..... 52, 53
		RTC cartridge	Tools size 3 ..... 55
<b>F</b>		Machine group H & I ..... 52	
Form punch ..... 15		Size 2 ..... 52	
		Size 5 ..... 53	
<b>I</b>			
Inserts 4-station Multitool ..... 22		<b>S</b>	
Inserts 6-station Multitool ..... 23		Slitting close to embossing	
		5 x 56 ..... 33	
<b>M</b>		5 x 56 (PU) ..... 34	
Multitool		5 x 76,2 (PU) ..... 35	
10-station die ..... 24		Slitting punch blade insert ..... 30, 31, 32, 33	
Machine group H and TC260 ..... 22, 23		Slitting tools ..... 27	
Multitools ..... 17		5 x 30 ..... 30	

SALVAGNINI | THICK TURRET | TRUMPF



Am Steinkreuz 2  
95473 Creußen | Germany

**WEB:** [www.pass-ag.com](http://www.pass-ag.com)  
**MAIL:** [info@pass-ag.com](mailto:info@pass-ag.com)

**FON:** +49 (0) 92 70 / 9 85 - 0  
**FAX:** +49 (0) 92 70 / 9 85 - 99